



HERB BECK
MARINA



“WE’RE LISTENING, QUILCENE”

PORT OF PORT TOWNSEND
COMMUNITY OUTREACH PROJECT

HERB BECK MARINA AND PORT PROPERTIES
SUMMER, 2021

Jeannie McMacken, Communications Consultant

QUILCENE OUTREACH: 2021

Active Listening

Purpose:

Create a meaningful way for Quilcene and south Jefferson County residents to express their concerns and hopes for the Herb Beck Marina facility.

- 58 acres of waterfront & uplands, 2 acres of tidelands
- 51-slip marina, boat launch ramp, rock breakwater
- Property also includes Coast Seafoods, gravel parking lot, public restrooms & showers, office, and swimming dock

“We have found that county residents are eager to become involved and share their views and we want to help make that happen in a straightforward, welcoming and conversational way.”

Pete Hanke,
Port Commission President

- Need for **better communication** between Quilcene residents and the Commission
- **Unanimous Commissioner support** for encouraging dialogue
- Provide an **opportunity to participate** in Port governance issues and have a voice
- **Gain insights** from a wide cross-section of the community
- **Independent report**; no Port staff or commissioner participation

THE BOTTOM LINE:

- Improve communications and our own listening skills
- Work with you to solve problems and achieve shared goals
- Encourage dialogue
- Become involved proactively by helping us chart the future of this beloved community facility
- **This report uses the community's words to develop key themes for action by the Commissioners**



PROJECT OVERVIEW

“If you could shape the future of the Herb Beck Marina and adjacent uplands, what changes would you make?”

- 107 responses
- 39 percent of 259 Quilcene households
- Posters, reader board, high school presentation, media, advertising, KPTZ “Working Waterfront,” Quilcene social media, Quilcene Yacht Club membership, word of mouth

THE WRITTEN QUESTIONNAIRE

1. Do you use the Port's Quilcene Facility?
2. What do you value most about the facility & wish to see preserved?
3. What do you dislike about the facility and wish to see changed?
4. What aspects of the facility are most in need of improvement?
5. What does the facility not have that the Quilcene community really needs?
6. What 3 things would you like to see at the Herb Beck Marina in the next 5 years, 10 years?
7. If you fell asleep for 20 years, what would you see at the Quilcene marina when you awoke?
8. What else would you like to share with us that we really need to know?

ONE-TO-ONE LISTENING

Personal conversations included the same questions, but allowed a deeper dive into issues with an extended conversation.

Chats were a half hour. Most longer, some shorter. No limits.

Conversations were documented. No identifiers. I am tasked with faithfully reporting what I learned.

KEY TAKEAWAYS

- Residents and marina users are **passionate** about the facility and how it fits into the community and their lives.
- There is **skepticism**. Several felt their voices have been **dismissed** in the past after meeting and expressing their concerns over the years.
- **Environmental and ecological protection** are central concerns.
- **Economic development** at the HBM. How much? What?
- Concerns that the Port is **selling the HBM** to the private sector.

- The largest number of comments focused on the **general appearance and neglected repair and maintenance** of the property.
- Many commenters believe these issues rise to the level of posing **health and safety concerns**.

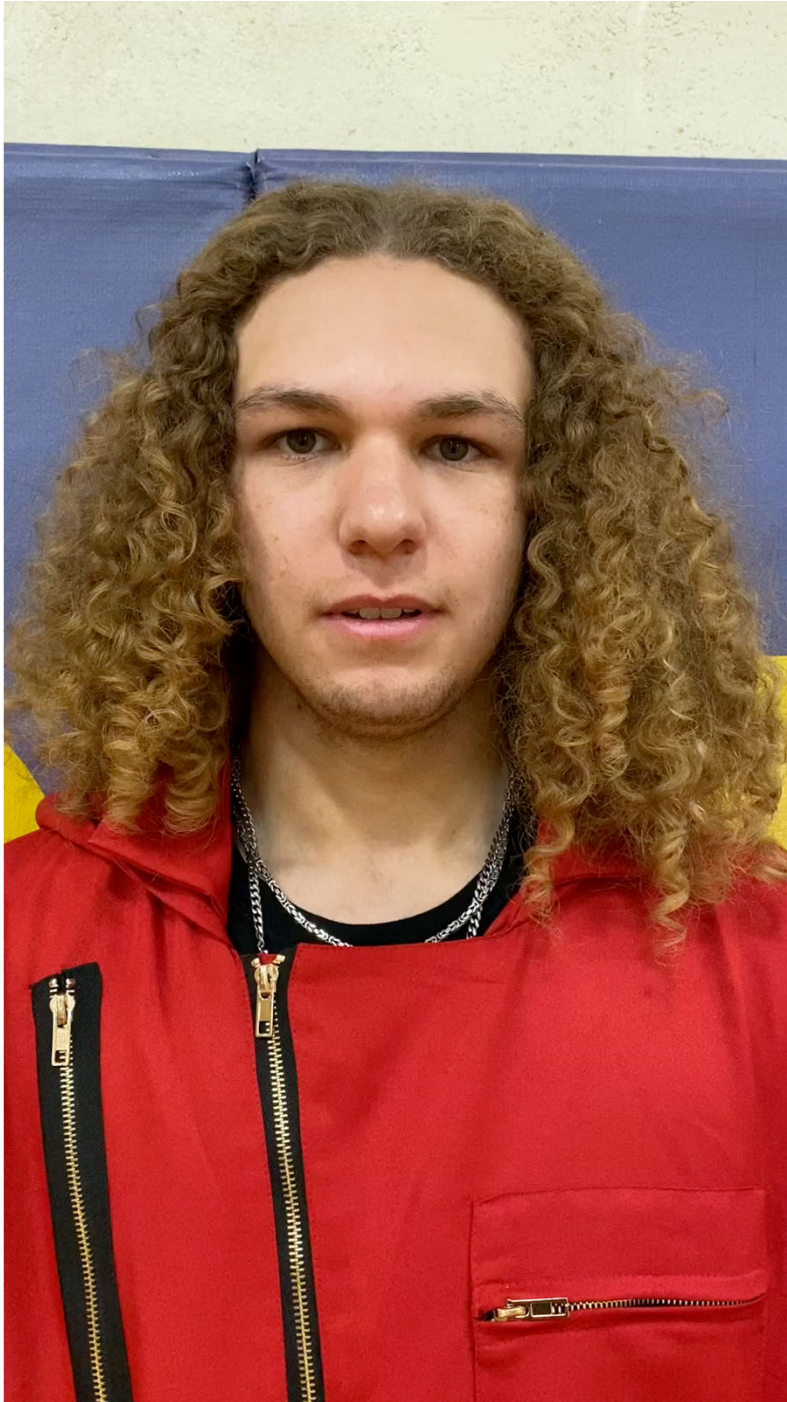


QUILCENE VOICES

**“The Bay is My Thinking Place.
I will Drive Down to the Swimming Beach
And Think
A Couple Times A Week.”**



My name is Ewan Lorrest, and I'm a Junior here at Quilcene High School. I think the biggest thing we can see improvement on in the marina area is just general maintenance and accessibility to the public, with parking areas, and general boat access, and all sorts of things like that.



Hi, my name is Ashton Johnston and I'm a Junior at Quilcene High School. I've been here for awhile and I always go down to the bay just to relax and hang out. One thing I think would need to be improved there – something that would have more engagement with people. You could put a park there for kids to go hang out, in case they don't want to go swimming, they can go there and hang out on the slides, the monkey bars, etc. For the older people you could have boat shops, kayaks and board rentals for people to go there and go kayaking and all sorts of boarding on the waves and have a fun time for everybody there.



Hi my name is Jake Wynn and I'm a Senior at Quilcene School. What I would like to see at the Quilcene Marina is easier access for all people to go down for swimming, hanging out, and to enjoy their time.



WHAT THE HBM REPRESENTS “ ”

This Bay is a **Gem**. Continue to **protect** it.

This is an essential part of the quality of life for locals and the value of the recreational experience for visitors. It's **an asset of immeasurable value** and is **an element of local traditions and life** in the Hood Canal area.

Keep this Marina that is so **important to the economic health** of the area.

This land and its access to maritime activities is **essential to the community and its environmental health.**

The Marina is an **essential part of the quality of life** for locals.

This is **the heart of the Quilcene community** and our **only public access** to the warmest swimming beach in the Sound. Support our community. Invest in Quilcene.

We need to make sure we are **preserving the land and waterways** while also **preserving employment and food production** for our community.

Linger Longer has been a **public treasure** for many more years than I have been around. I grew up utilizing the facilities since the 1960s and I want **my grandkids and their kids** to have that same opportunity.

WOMEN

**PORT
RESTROOM/SHOWERS
ARE FOR PORT PATRONS**
**PLEASE CONTACT US FOR
RESTROOM/SHOWER PASSES**
360-765-3131/360-385-6211

FACILITY IMPRESSIONS “ ”

The Marina is basically a **derelict slum**.

It's **dirty**...it's **an embarrassment** to the Community.

It is completely **neglected**.

The community and its visitors and tourists **deserve a facility that is clean and functional**.

Picnic Tables are in the dirt.





MAINTENANCE TO-DOs “ ”

- **Safety** is a big concern—docks are **outdated**.
- **Clean it** up and **KEEP IT maintained**.
- Make **basic improvements** to give it some **aesthetic quality** and keep the functional areas **functioning**.
- **Dredge** the harbor entrance. The silt has come up to less than a 4- foot depth.
- Bring back the **Fuel Dock**.
- **Expand** the number of **berths** with **improved electrical and water** at dock side.



- Bumpers on dock are **missing**; cleats are **loose**, loose screws are popping causing **damage** to boats.
- **Widen** boat launch pads.
- Add a **pump-out station**.
- **Enlarge** the marina--rearrange to get more boats in.
- The **walkway** to the right of the Boat Ramp is **very dangerous**.
- **Electrical** and **Water** on docks need **upgrades**.
- Make the ramp **a straight shot** rather than a 45 degree turn

- Install **fire extinguishers** on the dock
- Add **potable water**
- **Faucets** are **broken** to wash boats
- **Lock the garbage**
- Add a **70ft Floating Dock for big boats** to tie up—more and more are coming into Dabob Bay to anchor
- Check the **pilings**—they seem to be in **bad shape**.

- People **do not pay** to launch their boats. A **full-time person** would monitor that. You are losing money.
- Accommodate **locals first**.
- Create a **reciprocal dock agreement** with other marinas- brings urban people who will spend money in the community.
- There **are boats that have not moved**- abandoned? There's a Bayliner that hasn't moved in 2 ½ years.
- Need a **harbormaster** there 7 days a week.
- Locals, county should get **precedence for slips**, out-of-towners rent too many slips



COMMERCIAL FACILITIES “ ”

- Please, please **do not sell** the Linger Longer Beach for commercial development.
- There's significant **light pollution** from Coast facilities.
- **Noise** from Coast is intrusive, in violation of regulations.
- Coast is **encroaching** on Port property.
- Coast continues to **expand its operation**
- Insist on **yearly test of effluent** from oyster operation

- Ask Coast to do **monthly educational tours** about what they do and how they help the community.
- Coast expansion has had a **detrimental effect on the water quality and marine life** in the area. Spat is ok because it cleans the water, but dumping is not. There are 500 gallons of fecal matter dumped into the bay every day, according to Coast.
- **Legal filings** from the Olympic Forest Coalition v. Olympic Seafoods Company, court case, U.S. Court of Appeals for the Ninth Circuit:
 - *The question is whether “pipes, ditches, [and] channels” and “concentrated animal feeding operations” are **all point sources of discharge pollution**.*



QUILCENE HARBOR YACHT CLUB “ ”

- Yacht Club is fine for people who belong but it should **serve the entire community**, not just members.
- Yacht Club is an **asset**, but open it for rentals by **other groups**.
- **Re-create the lodge** with a café that can be run by seniors.
- **Give the Yacht Club the building**. They can expand their community outreach—scholarships, boat safety, kid-oriented activities.
- Continue to keep the Yacht Club, offer **long-term lease**.

PARTNERSHIPS “ ”

- Involve the **Marine Science Center** and have them do a display here about marine life in the Bay.
- Connect **school kids** to the Bay through information and recreation.
- **Seasonal store** to buy ice, beer, bait.
- Offer a long-term lease to the Quilcene Village Store to have a **bodega/ campground store** on site.
- The Port should look for **partners/ entrepreneurs** to make a profit.

GOVERNANCE “ ”

- The Port is the only government body charged with economic development. I would like to see some **effort** towards economic development in the South County. We need your effort.
- I would **vote** for Commissioners who understand that the Port has a role in economic development, especially in Quilcene.
- Do **a better job** of managing the place, commissioners need to be more involved.
- Commissioners **don't care about us**; hold meetings here.
- Commissioners need to put in **a lot more focus, effort**
- I wouldn't be surprised if nothing changed in 20 years to be honest, as it **doesn't seem to be a high priority** to the acting stewards

ECONOMIC DEVELOPMENT “ ”

- I'd like to see **more public funds invested** in our small town and opportunities for community involvement and leadership.
- A **destination restaurant serving fresh seafood** would be fantastic. Even a **snack food stand** would help. **Kayak etc. rentals** would be amazing. **RV & Camping spots** might draw more folks to the area. Maybe some sort of **environmental education experience**...perhaps linked to Coast. They have an interesting process that could be used to show importance of protection of our environment.
- Add **food trucks, ask Coast to do an Oyster bar**

- Add **Glamping** on the hill.
- Consider a **coffee truck on shrimping days**
- Improve uplands- **camping, picnic tables--** make it user friendly
- HBM is economic development—a managed recreation area with **paddleboards, kayaks, rentals, instruction. Market on ferries**, other. Balanced, thoughtful and reasonable growth.

SPECIAL CONSIDERATION “ ”

- I live on a well. The **shower facility** helps me due to well water not always being readily available to be able to shower having adequate hygiene...Closing the facility to local people is going to cause many long-time residents hardship.
- Add a **shuttle to town** for travelers so they can discover Quilcene.
- Better **seasonal parking**. Take shrimp season-- vehicles and trailers park all along Longer Longer.
- We live on Linger Longer Road. Please **reduce the speed** as many of us walk the road and little ones ride their bikes and trikes. 30 mph is way too fast.

- With attention and care, this marina could showcase a **vibrant, attractive waterfront public space and commercial hub** for a thriving shellfish industry that models sustainable practices and conservation, and that is welcoming to the public, protective of its workers and the resources that make it all possible.
- My daughter and I go swimming down there all the time with many other kids and families. People **need to shower off** after they're in saltwater. These bathrooms need to **remain public** and not private because many **people vacation from other areas** and come to this beach...keep it open to the public. We pay for it with our tax dollars.

SUGGESTIONS “ ”

- [It's] a convenient location, however the deteriorating condition and dangerous ramp were **factors in selling our boat.**
- **DO NOT SELL THE PROPERTY**
- The Quilcene Marina area still has **so much potential to become a destination spot** for the whole county and beyond.
- The County should **sell all its ports--** including the airport. Let **people who actually use them be the financial support**, not taxpayers.
- Great spot. **Keep us small and under the radar** if possible while **still being successful** as a port.

FINAL THOUGHTS “ ”

- I'd like to see it **enhanced**, but want it still to be Quilcene.
- We need to make sure we are **preserving** the land and waterways while also preserving employment and food production for our community.
- The Port and Beach areas are one of Quilcene's **greatest resources**. It needs a vision, planning and financial help to develop into what it can be. But it could become **a great asset** for Quilcene, the Port and County. Thank you for asking, and please make it happen.
- **Thank you for taking the time to get the community's input.**



7 KEY THEMES

1. That Community concerns are taken seriously.
2. Concern that the facility be used in the future as it historically has been – as a Community gathering place.
3. Concerns that the facility is essentially off-the-radar—it isn't well signed, it's under-utilized and under-appreciated.
4. Concern that the negative appearance of the facility reflects how the Port views it as a priority. Concern continuing neglect gives rise to health & safety issues.

5. Concern that the economic potential of the facility is not fully realized. Let the Quilcene Community help realize that potential.
6. Concern that a cherished community asset may be privatized.
7. Concern about the environmental quality and water quality of Quilcene Bay.

COMMISSIONER DISCUSSION.

Next Steps?

