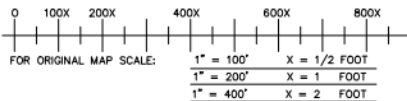


JEFFERSON COUNTY ASSESSOR  
PARCEL MAP

This sketch is provided, without a charge, for your information. It is not intended to show all matters related to the property including, but not limited to, area, dimensions, easements, encroachments or location of boundaries. It is not a part of, nor does it modify, the commitment or policy to which is attached. The Company assumes NO LIABILITY for any matter related to this sketch. Referenced should be made to an accurate survey for further information.

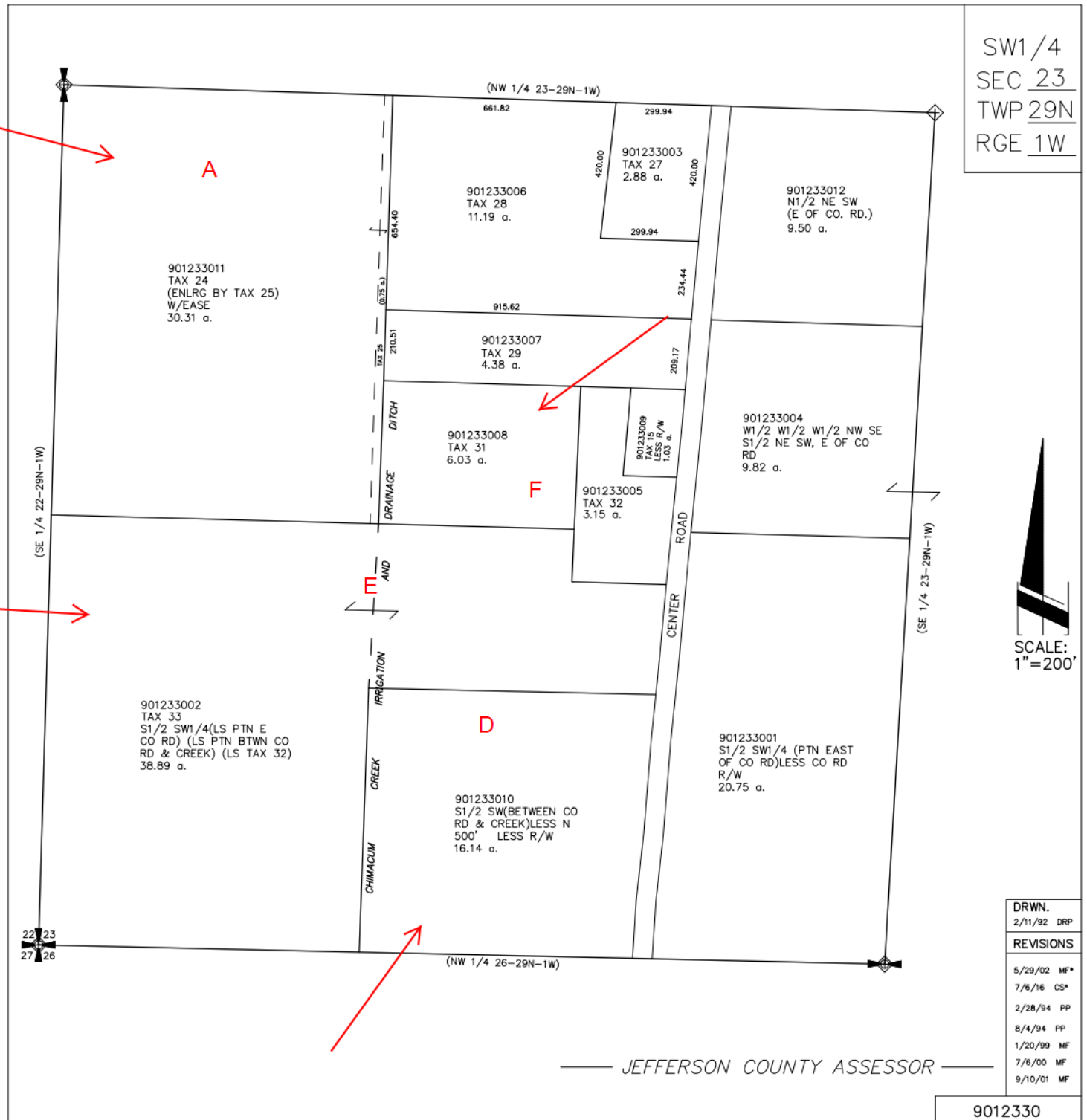
MAP SCALE GIVEN UNDER THE NORTH ARROW IS FOR THE ORIGINAL DRAWING ONLY.  
THIS COPY MAY BE A REDUCED OR ENLARGED REPRODUCTION.  
PLEASE REFER TO THE SCALE BELOW.



THE ASSESSOR DOES NOT IN ANY WAY GUARANTEE THE ACCURACY OF THE ACREAGE AND PARCEL BOUNDARIES DEPICTED ON THESE MAPS. PARCEL SIZE AND LOCATION IS BASED ON INFORMATION AVAILABLE, INCLUDING RECORDED SURVEYS, LEGAL DESCRIPTIONS, AERIAL PHOTOGRAPHS, AND VARIOUS GOVERNMENT SOURCES. WHERE THIS INFORMATION IS INSUFFICIENT, PARCEL BOUNDARY LOCATIONS ARE ESTIMATED.  
PARCEL MAPS ARE UPDATED FREQUENTLY. PLEASE CHECK WITH THE COUNTY ASSESSOR FOR THE LATEST REVISION.

FOR MORE INFORMATION, CONTACT:

JEFFERSON COUNTY ASSESSOR  
P.O. BOX 1220  
PORT TOWNSEND, WA. 98368



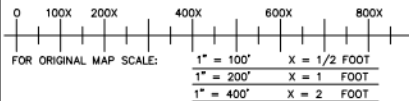
SCALE:  
1"=200'

DRWN.	2/11/92 DRP
REVISIONS	
5/29/02 MF*	
7/6/16 CS*	
2/28/94 PP	
8/4/94 PP	
1/20/99 MF	
7/6/00 MF	
9/10/01 MF	

JEFFERSON COUNTY ASSESSOR  
PARCEL MAP

This sketch is provided, without a charge, for your information. It is not intended to show all matters related to the property including, but not limited to, area, dimensions, easements, encroachments or location of boundaries. It is not a part of, nor does it modify, the commitment or policy to which is attached. The Company assumes NO LIABILITY for any matter related to this sketch. Referenced should be made to an accurate survey for further information.

MAP SCALE GIVEN UNDER THE NORTH ARROW IS FOR THE ORIGINAL DRAWING ONLY.  
THIS COPY MAY BE A REDUCED OR ENLARGED REPRODUCTION.  
PLEASE REFER TO THE SCALE BELOW.

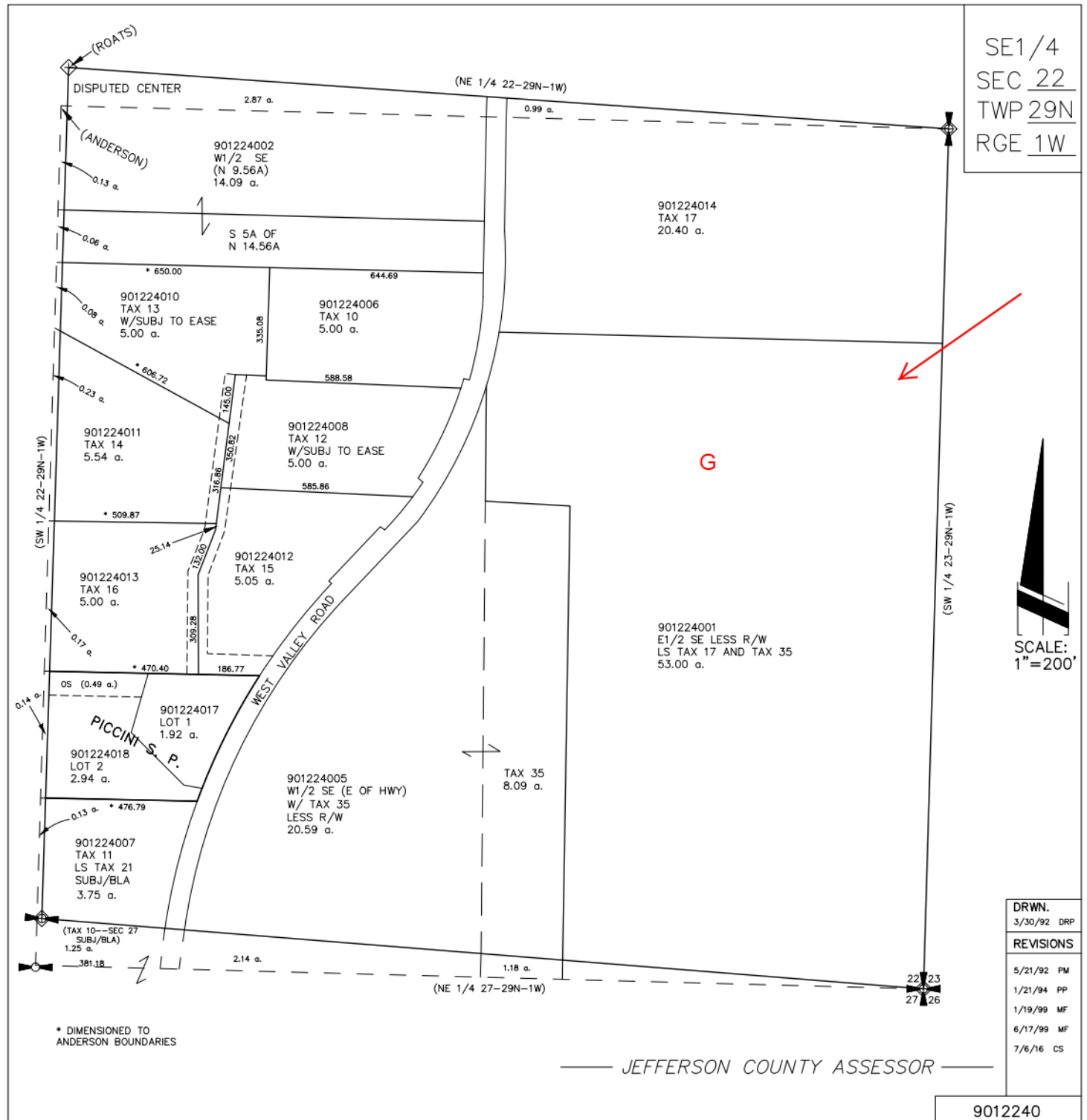


THE ASSESSOR DOES NOT IN ANY WAY GUARANTEE THE ACCURACY OF THE ACREAGE AND PARCEL BOUNDARIES DEPICTED ON THESE MAPS. PARCEL SIZE AND LOCATION IS BASED ON INFORMATION AVAILABLE, INCLUDING RECORDED SURVEYS, LEGAL DESCRIPTIONS, AERIAL PHOTOGRAPHS, AND VARIOUS GOVERNMENT SOURCES. WHERE THIS INFORMATION IS INSUFFICIENT, PARCEL BOUNDARY LOCATIONS ARE ESTIMATED.

PARCEL MAPS ARE UPDATED FREQUENTLY. PLEASE CHECK WITH THE COUNTY ASSESSOR FOR THE LATEST REVISION.

FOR MORE INFORMATION, CONTACT:

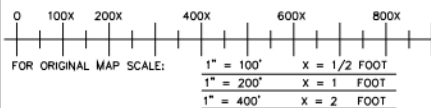
JEFFERSON COUNTY ASSESSOR  
P.O. BOX 1220  
PORT TOWNSEND, WA. 98368



JEFFERSON COUNTY ASSESSOR  
PARCEL MAP

This sketch is provided, without a charge, for your information. It is not intended to show all matters related to the property including, but not limited to, area, dimensions, easements, encroachments or location of boundaries. It is not a part of, nor does it modify, the commitment or policy to which is attached. The Company assumes NO LIABILITY for any matter related to this sketch. Referenced should be made to an accurate survey for further information.

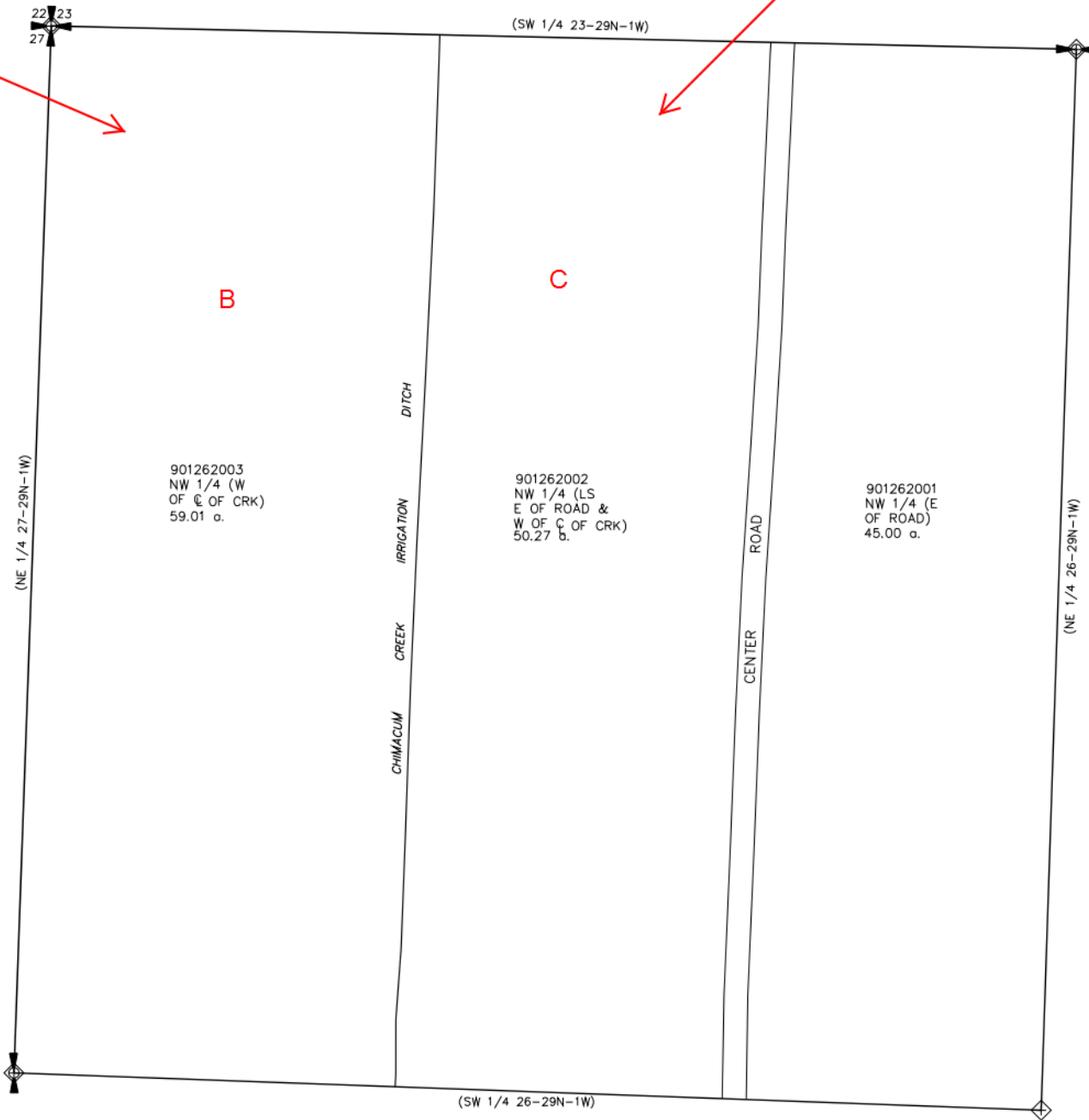
MAP SCALE GIVEN UNDER THE NORTH ARROW IS FOR THE ORIGINAL DRAWING ONLY. THIS COPY MAY BE A REDUCED OR ENLARGED REPRODUCTION. PLEASE REFER TO THE SCALE BELOW.



THE ASSESSOR DOES NOT IN ANY WAY GUARANTEE THE ACCURACY OF THE ACREAGE AND PARCEL BOUNDARIES DEPICTED ON THESE MAPS. PARCEL SIZE AND LOCATION IS BASED ON INFORMATION AVAILABLE, INCLUDING RECORDED SURVEYS, LEGAL DESCRIPTIONS, AERIAL PHOTOGRAPHS, AND VARIOUS GOVERNMENT SOURCES. WHERE THIS INFORMATION IS INSUFFICIENT, PARCEL BOUNDARY LOCATIONS ARE ESTIMATED. PARCEL MAPS ARE UPDATED FREQUENTLY. PLEASE CHECK WITH THE COUNTY ASSESSOR FOR THE LATEST REVISION.

FOR MORE INFORMATION, CONTACT:

JEFFERSON COUNTY ASSESSOR  
P.O. BOX 1220  
PORT TOWNSEND, WA. 98368



NW 1/4  
SEC 26  
TWP 29N  
RGE 1W



DRWN.
2/22/92 DRP
REVISIONS
5/21/92 BB
7/13/92 PM
2/10/95 SW
9/11/01 MF

JEFFERSON COUNTY ASSESSOR

9012620