

PORT OF PORT TOWNSEND HERB BECK MARINA BOAT LAUNCH REPLACEMENT PROJECT 22-2095 DEV

Development | Boating Facilities Program | Grant Project Evaluation Meeting
November 16, 2022





SUMMARY: HERB BECK MARINA BOAT LAUNCH REPLACEMENT PROJECT



Scope

- ADA-Compliant Boat Launch Ramp, Access Wedge, & Boarding Float
- ADA-Compliant Restroom Renovations
- ADA-Compliant Parking Lot Improvements

Funding

- \$2,022,000 Total Project
- \$1,022,000 Port Match Ready

Need

- Ramp Degraded & Potentially Unsafe

Schedule

- Permitting: 2023-2024
- Construction: 2024-2025

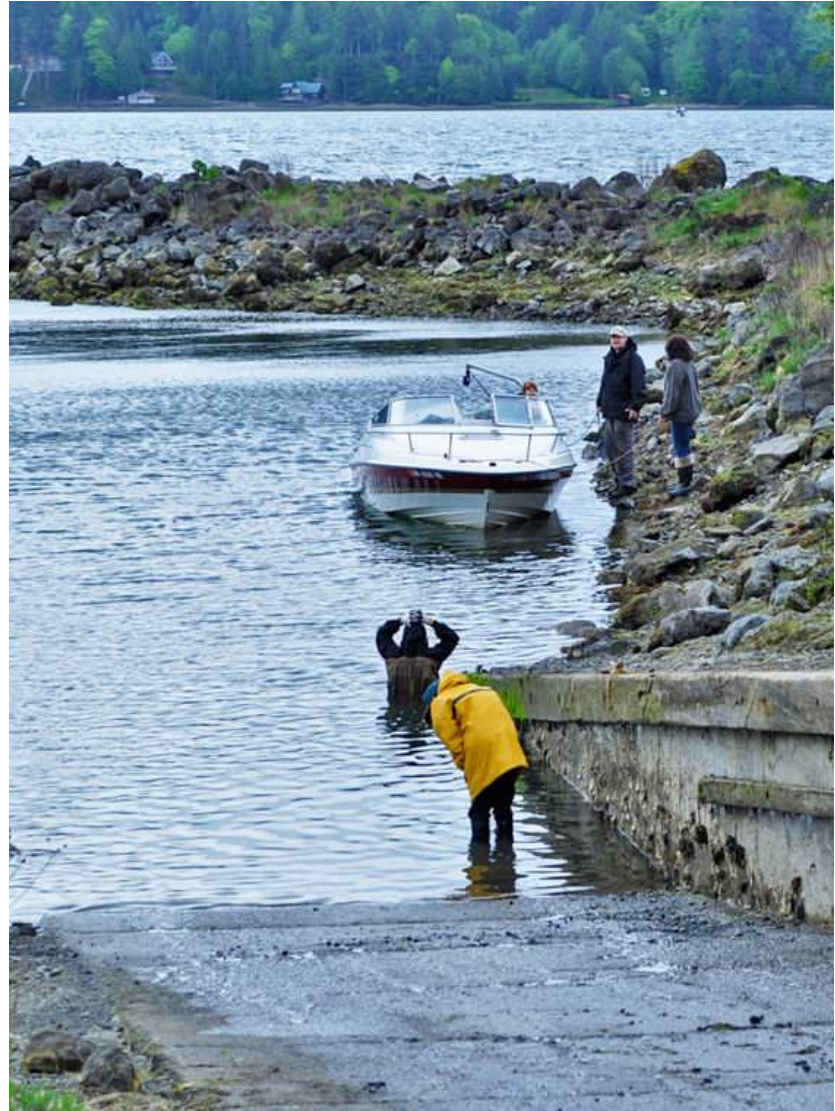


QUESTION 3: URGENCY

Launch Past Its Design Life — Not Meeting Boating Needs

“Access is hazardous ... the ramp is too steep, broken, rocky, and narrow. Many of us cannot, dare not get into our boats. Certainly no one with a disability or small children would even try to use it.”

-Kit Kittredge & Anne Ricker
Linger Longer Improvement Committee

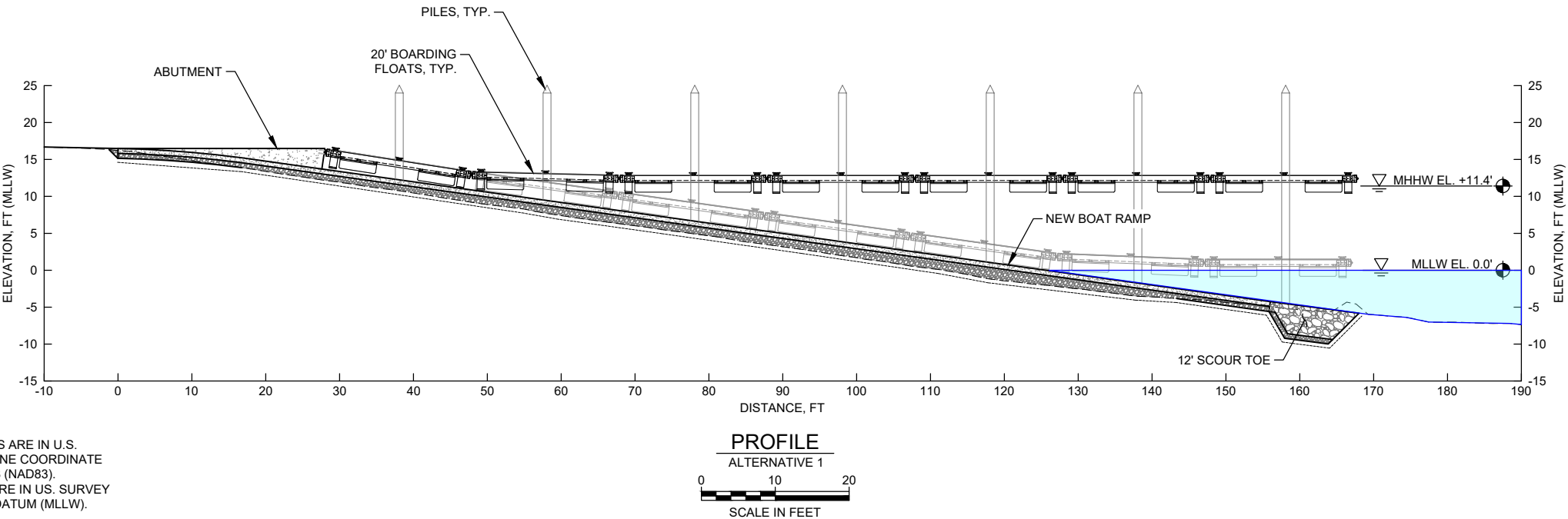
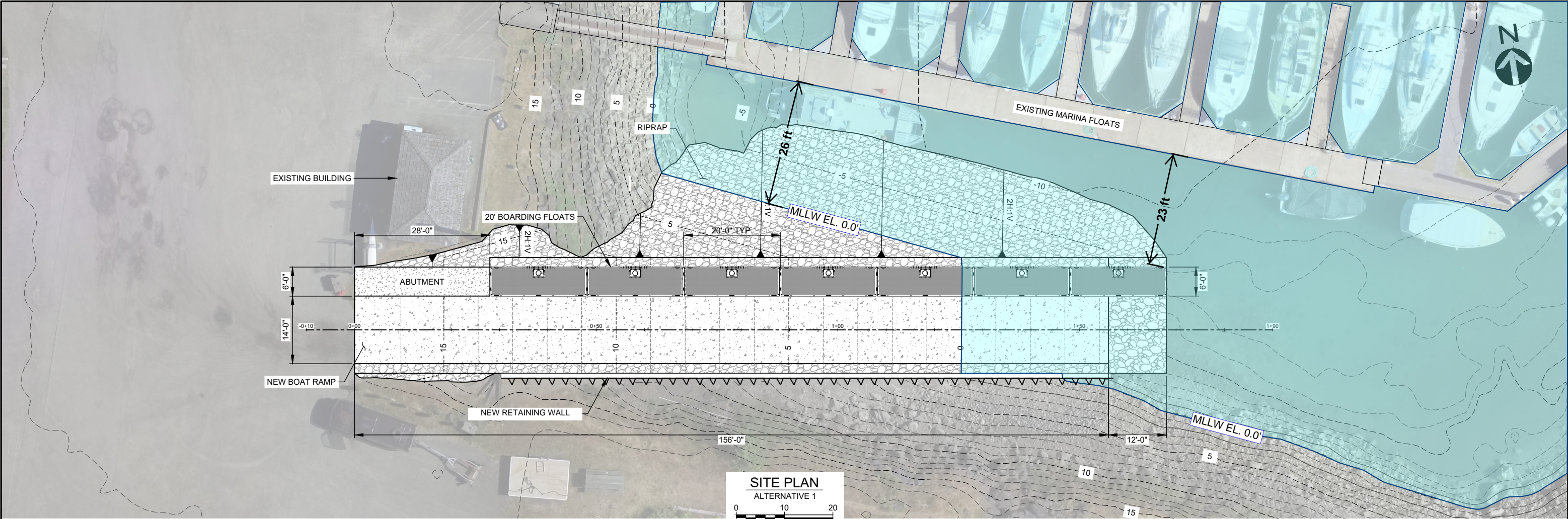




QUESTION 1: NEED

Aging, Non-ADA Compliant Restroom Facilities





- NOTES**
- HORIZONTAL COORDINATES SHOWN ON THESE DRAWINGS ARE IN U.S. SURVEY FEET RELATIVE TO THE WASHINGTON STATE PLANE COORDINATE SYSTEM, NORTH ZONE, NORTH AMERICAN DATUM OF 1938 (NAD83).
 - VERTICAL COORDINATES SHOWN ON THESE DRAWINGS ARE IN U.S. SURVEY FEET RELATIVE TO MEAN LOWER LOW WATER VERTICAL DATUM (MLLW).

DRAFT

<div>MOTT MACDONALD</div> <div>1601 5th Avenue Suite 800 Seattle, Washington 98101</div> <div>T +1 (425) 778 6243 mottmac.com</div>	Client							<div>Project Number</div> <div>507102683</div>	<div>B/O</div> <div>2</div>	<div>Total</div> <div>3</div>	Designed			Eng check			Title <div>HERB BECK MARINA BOAT RAMP IMPROVEMENTS</div> <div>SITE PLAN - ALTERNATIVE 1</div>
		Drawn			Coordination												
		Dwg check			Approved												
		Scale at ANSI D		Status	Rev		Security										
		As Noted															
		0	10/18/22	TM	Preliminary Design Layout	AG	EE				Drawing Number						
		Rev	Date	Drawn	Description	Ch'k'd	App'd										



QUESTION 4: PROJECT DESIGN

Larger Scope – Overall Facility Renovation & Improvement



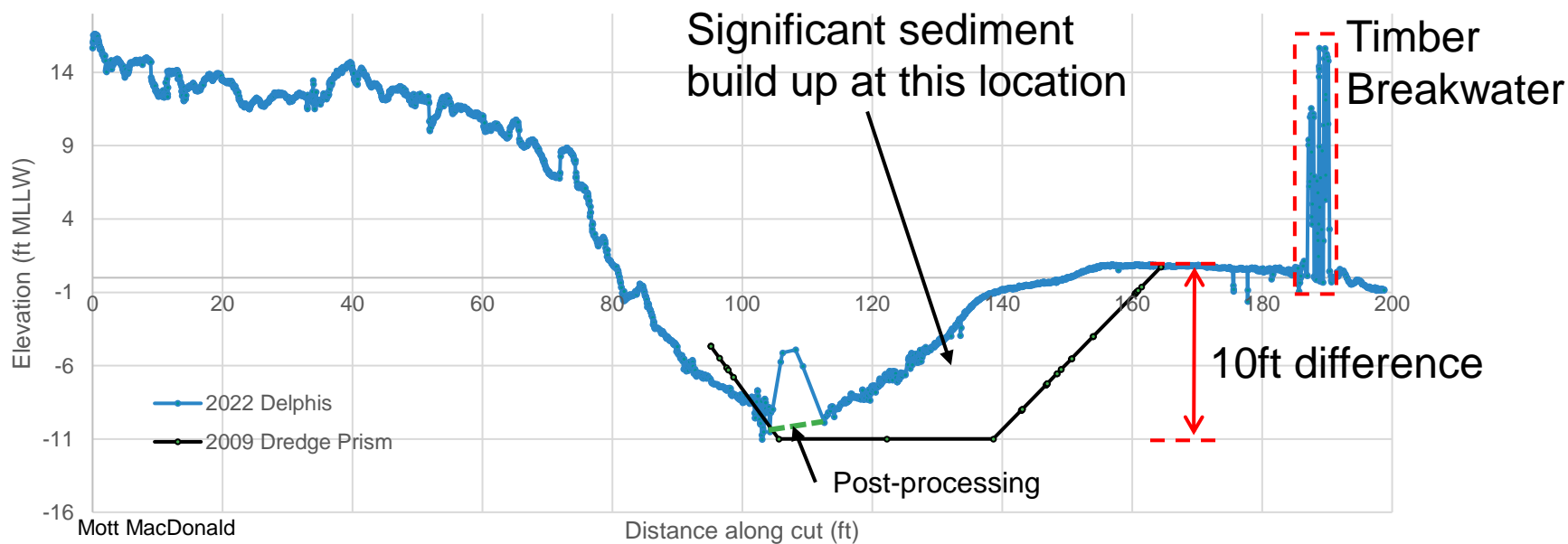
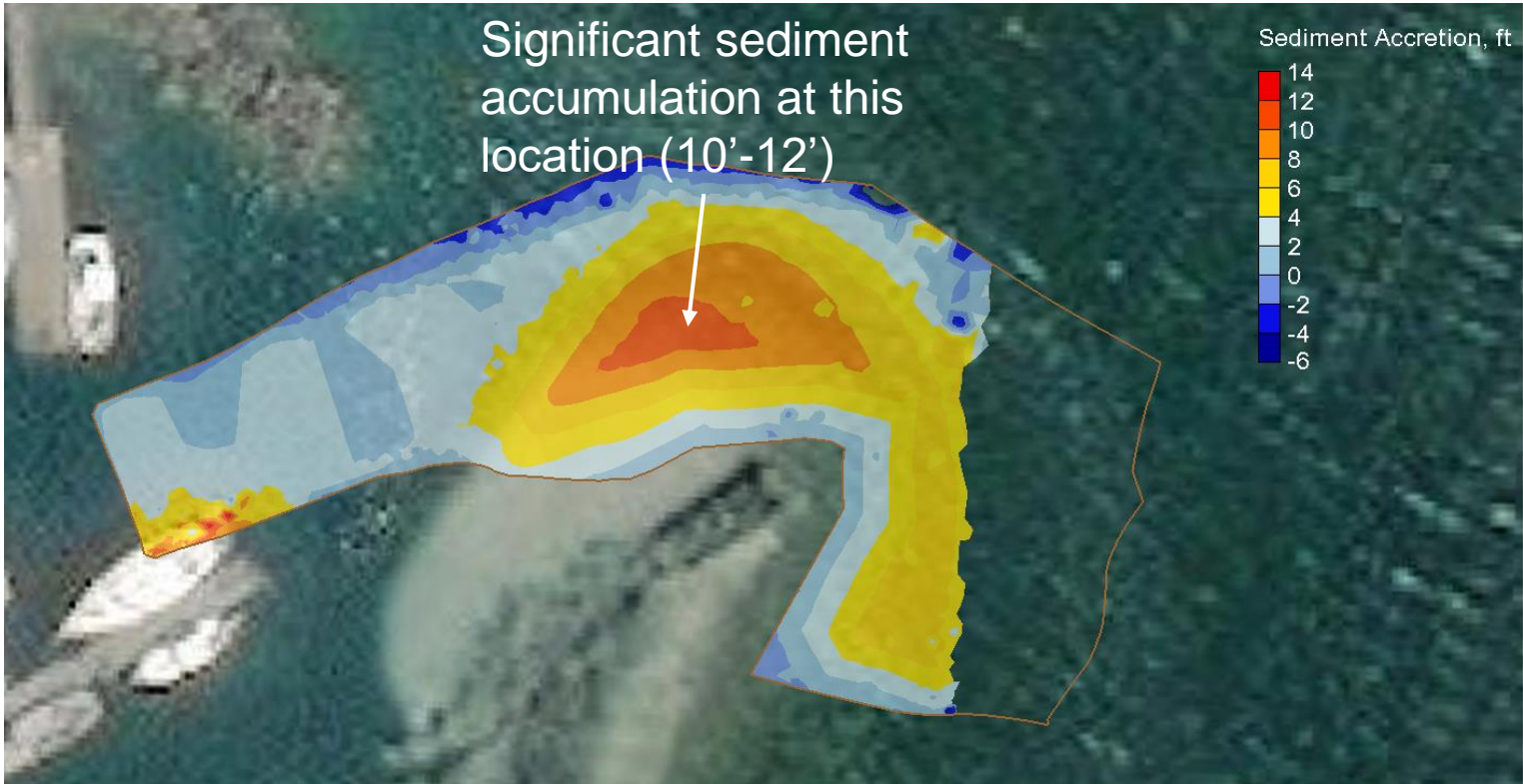
OVERALL FACILITY IMPROVEMENT PLAN

- ✓ PROJECT: 22-2095 DEV
- ✓ MAINTENANCE DREDGE
- ✓ DOCK RESTORATION
- ✓ RV CAMPGROUND DEVELOPMENT
- ✓ PORTLAND LOO & OUTDOOR SHOWER

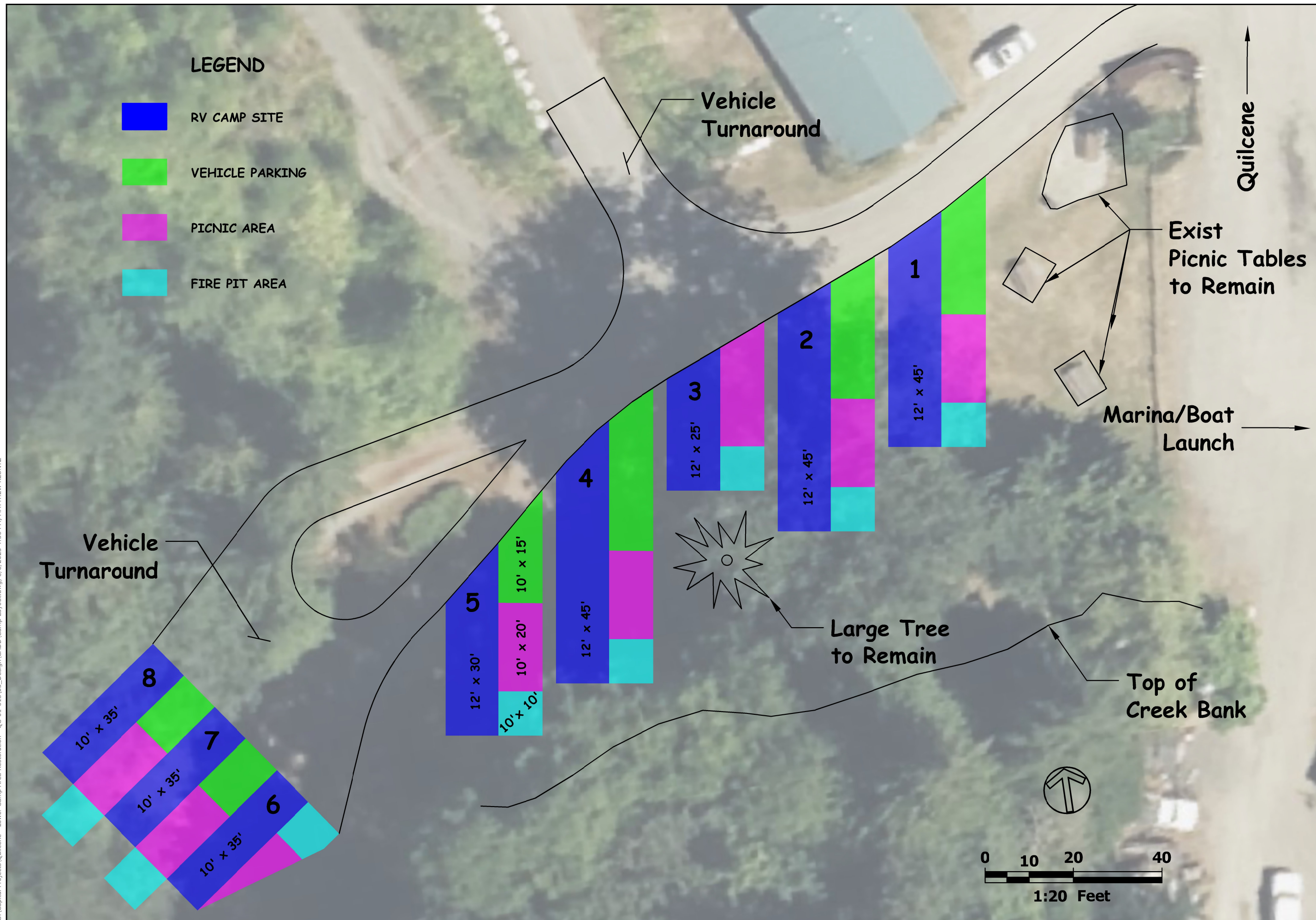
Sedimentation Analysis

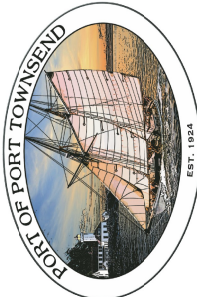
- Estimated by comparing the 2022 survey surface to the 2009 dredge prism
- Preliminary estimated dredge volume: 1,700-2,000* CY

*not including overdredge



G:\Capital Projects\Quilcene - Lower Camp Area Restoration - QC-01--013\05_Design\CADD\Camp Layout.dwg, 8/8/2023 4:56 PM, MATTHEW KLONTZ





PORT OF PORT TOWNSEND
EST. 1924

DATE: 8/23/2023	SCALE: NOTED	DRAWN: DN	CHECKED: MK	APPROVED: EB
EXHIBIT DRAWING		REVISION	DATE	APPD
0		No.	062323	

PORT OF PORT TOWNSEND
JEFFERSON COUNTY
WASHINGTON

**QUILCENE CAMPGROUND
RESTORATION**

SHEET: _____
OF: 1

JOB NO.: _____
DWG: _____