

Port of Port Townsend

ADDENDUM NO.2

**Boat Haven Boatyard
Stormwater Improvement**

Contract No.: BH-01-008

TO ALL BIDDERS:

The following modifications to the bidding documents for the above-named project as originally issued on October 30, 2024 are hereby incorporated into said documents and shall be fully considered in preparation of proposals.

Please thoroughly review the Addendum.

Replace page 2 of **00 41 13 Bid Form**. Schedule A Bid Item A7 “Electrical Pedestal Relocation” is now a force account item.

Replace in Specification Section **01 20 00 Measurement and Payment 1.04 – Bid Item** bullet #7.

7. **Bid Items A7 – Electrical Pedestal Relocation**

- a. Measurement: Force Account
- b. Description: Work under this item shall include all submittals, materials, equipment, and labor required to remove and relocate existing electrical pedestals in conflict with concrete curb and gutter.
- c. Payment: “Electrical Pedestal Relocation” by force account. For the purpose of providing a common bid, an estimated amount is included on the Bid Form.

Replace page 3 of **00 41 13 Bid Form**. Schedule A Bid Item A32 “Bollard Replacement” is a new force account item.

Add in Specification Section **01 20 00 Measurement and Payment 1.04 – Bid Item** bullet #33.

33. **Bid Items A32 – Bollard Replacement**

- a. Measurement: Force Account
- b. Description: Work under this item shall include all submittals, materials, equipment, and labor required to remove and replace concrete bollards in conflict with excavation and pavement work.
- c. Payment: “Bollard Replacement” by force account. For the purpose of providing a common bid, an estimated amount is included on the Bid Form.

Replace in Specification Section **01 20 00 Measurement and Payment 1.04 – Bid Item** bullet #9b

- b. Description: Work for this item shall include all Work to construct the first three stages of the stormwater treatment system (Chitosan Detention Basin, Coarse Filter and Biofiltration) system complete as shown on the Drawings or described in these Specifications, including but not limited to, submittals, concrete structures, foundations, CSBC, quarry spalls, piping between stages, manifolds, overflow structures and pipes up to manholes, warning tape, drainage basins, geotextile, treatment media, aggregates, and quality control testing. Work for this item includes but is not limited to dewatering, excavation and fill, compaction and restorative work necessary to construct the system in accordance with the Contract Documents.

Replace in Specification Section **01 20 00 Measurement and Payment 1.04 – Bid Item** bullet #32b

- b. Description: Work for this item shall include all Work to construct the fourth stage of the stormwater treatment system (Polish Filter) system complete, as shown on the Drawings or described in these Specifications, including but not limited to, submittals, concrete structures, foundations, CSBC, quarry spalls, piping between stages, manifolds, overflow structures and pipes up to manholes, warning tape, drainage basins, geotextile, treatment media, aggregates, and quality control

testing. Work for this item includes but is not limited to dewatering, excavation and fill, compaction and restorative work necessary to construct the system in accordance with the Contract Documents.

Replace in Specification Section **01 57 00 Environmental Protection 1.03.A.2. – Disposal Operations** bullets b & c with the following:

- b. Remove all unsuitable material from the site and dispose of offsite in accordance with applicable regulations at the disposal site indicated in the Environmental Protection Plan. No additional compensation will be paid to the Contractor for such disposal. Include all such costs in the lump sum prices bid for the project.
- c. Unsuitable material shall include but is not limited to concrete and asphalt rubble, lumber, steel castings, piping, shrubbery, trees, timber, solid waste, and other foreign materials.

Replace in the Contract Plans sheets **S-001, S-102, S-104, and S-105**.

Add in Specification Section **31 00 00 Earthwork 2.01.G – Quarry Spalls** the following;

- 2. In lieu of meeting WSDOT Standard Specification's 9-13.1(1) testing requirements for Degradation Factor and Los Angeles Wear, as a condition of source approval, the Contracting Agency may visually inspect to verify that the quarry spall meets the necessary quality specifications.

Addendum issued by: _____

BID REQUIREMENTS

Bidder shall submit a price for all items on the Bid Schedule as shown above including the alternative/option bid item(s), if any. Incomplete Bid Schedule will not be considered responsive Bids and, therefore, will be rejected.

Schedule A – Boat Haven Boatyard Stormwater Improvement

Item No.	Description	Qty	Unit	Unit Price	Total Price
A1	Mobilization	1	LS		
A2	Temporary Erosion and Sediment Control	1	LS		
A3	Potholing/Existing Utilities Verification	19	EA		
A4	Construction Survey	1	LS		
A5	Trench Safety Excavation Provisions	1	LS		
A6	Demolition	1	LS		
A7	Electrical Pedestal Relocation (FA)	1	EST.	<u>\$5,000.00</u>	<u>\$5,000.00</u>
A8	Stockpile (Excess Material)	3000	CY		
A9	Stormwater Treatment System Stage 1, 2, & 3	1	LS		
A10	Trail Surfacing (1/4" Basalt)	40	TON		
A11	Crushed Surfacing Base Course	680	TON		
A12	Quarry Spalls	680	TON		
A13	Pavement Removal	320	SY		
A14	8" HDPE Force Main	1100	LF		
A15	24" PVC Stormwater Pipe	720	LF		
A16	12" PVC Stormwater Pipe	70	LF		
A17	4'-ID Storm Drain Manhole	9	EA		
A18	Lift Station	1	LS		
A19	Outlet Structure (2-1)	1	EA		
A20	42" Reinforced Concrete Pipe (RCP)	55	LF		
A21	36" Reinforced Concrete Pipe (RCP)	10	LF		
A22	18" Reinforced Concrete Pipe (RCP)	5	LF		
A23	12" Ductile Iron (DI) Pipe	10	LF		

Item No.	Description	Qty	Unit	Unit Price	Total Price
A24	24" Check Valve	1	EA		
A25	42" Check Valve	1	EA		
A26	Concrete Curb and Gutter	420	LF		
A27	Plantings	1	LS		
A28	HMA Cl. ½-inch PG 64-22 (Pavement Repair)	180	TON		
A29	Planning Bituminous Pavement	1370	SY		
A30	HMA Cl. 1/2-inch PG 70-22 (Overlay)	170	TON		
A31	Apprenticeship Utilization Adjustment	1	CALC	\$5,000.00	\$5,000.00
A32	Bollard Replacement (FA)	1	EST	\$5,000.00	\$5,000.00
				Subtotal	\$
				City of Port Townsend Sales Tax @ (9.40%)	\$
				TOTAL BID SCHEDULE A	\$

Schedule B – Boat Haven Boatyard Stormwater Improvement

Item No.	Description	Qty	Unit	Unit Price	Total Price
B1	Stormwater Treatment System Stage 4	1	LS		
				Subtotal	\$
				City of Port Townsend Sales Tax @ (9.40%)	\$
				TOTAL BID SCHEDULE B	\$

BID SUMMARY

TOTAL BID SCHEDULE A	\$
TOTAL BID SCHEDULE B	\$
TOTAL BID PRICE (all schedules)	\$

DESIGN CRITERIA

- 1. ACI 318-14
- 2. IBC 2021
- 3. ASCE 7-16

DEFINITIONS

- 1. ENGINEER - THE CONTRACTING AGENCY'S REPRESENTATIVE WHO DIRECTLY SUPERVISES AND CERTIFIES THE ENGINEERING AS WELL AS LEADING ADMINISTRATION OF THE CONSTRUCTION CONTRACT.

GENERAL CONDITIONS

- 1. THE CONTRACTOR SHALL VERIFY AND REVIEW ALL ITEMS WITHIN THE DRAWINGS PRIOR TO PROCEEDING WITH THE WORK. NOTIFY THE ENGINEER IMMEDIATELY WITH ANY DISCREPANCIES.
- 2. IF A SPECIFIC DETAIL IS NOT SHOWN FOR ANY PART OF THE WORK, THE CONSTRUCTION SHALL BE THE SAME AS FOR SIMILAR WORK.
- 3. DIMENSIONS ARE NOT TO BE SCALED FROM THE PLANS, SECTIONS OR DETAILS WITHIN THE DRAWINGS.
- 4. THE CONTRACTOR SHALL BE SOLELY RESPONSIBLE FOR THE CONSTRUCTION MEANS, METHODS, TECHNIQUES, SEQUENCE AND PROCEDURES.
- 5. ALL WORK SHALL CONFORM TO THE MINIMUM STANDARDS OF THE REFERENCED BUILDING AND ALL OTHER REGULATING AGENCIES, EXERCISING AUTHORITY OVER ANY PORTION OF THE WORK.
- 6. SPECIFIC NOTES AND DETAILS IN THE DRAWINGS SHALL TAKE PRECEDENCE OVER GENERAL NOTES AND SPECIFICATIONS.
- 7. NOTIFY THE ENGINEER OF ALL CHANGES MADE IN THE FIELD PRIOR TO INSTALLATION.

TANK FOUNDATION

- 1. FOUNDATION DESIGN PARAMETERS PER AESI, INC RECOMMENDATIONS
 - A. IBC SOIL SITE CLASSIFICATION
 - B. FOOTING BEARING PRESSURE
 - C. LATERAL EARTH PRESSURE:
 - STATIC AT-REST (ABOVE WATER) 55 PCF
 - STATIC AT-REST (BELOW WATER) 90 PCF
 - SEISMIC AT-REST 13H PSF
 - STATIC PASSIVE (ABOVE WATER) 300 PCF
 - STATIC PASSIVE (BELOW WATER) 150 PCF
 - SEISMIC PASSIVE 17.3H PCF
 - COEFFICIENT OF FRICTION 0.3
 - D. 3,000 PSF
- 2. SUBGRADE PREPARATION, DRAINAGE PROVISIONS AND OTHER RELEVANT SOIL CONSIDERATIONS ARE TO BE IN ACCORDANCE WITH THE GEOTECHNICAL REPORT.

STRUCTURAL STEEL WELDING

- 1. CONFORM TO THE AWS CODES D1.1 AND D1.3. USE ONLY WABO CERTIFIED WELDERS.
- 2. USE DRY E70 ELECTRODES.
- 3. WELDS ARE TO BE 3/8 INCH CONTINUOUS FILLET WELDS UNLESS NOTED OTHERWISE IN THE DRAWINGS.

STRUCTURAL STEEL

- 1. REFERENCE STANDARDS: LATEST EDITION OF THE AISC "CODE OF STANDARD PRACTICE FOR STEEL BUILDINGS AND BRIDGES".

2. MATERIALS:
BOLTS:

STEEL TO STEEL - ASTM 325
STEEL TO CONCRETE - HEAVY HEX HEAD ASTM F1554 GR. 36
TUBE STEEL - ASTM A500, GRADE B (Fy = 46,000 PSI)
ALL OTHER STEEL - ASTM A36 (Fy = 36,000 PSI)

REINFORCING STEEL

- 1. REFERENCE STANDARDS: ACI "DETAIL MANUAL" AND CRSI MANUAL OF STANDARD PRACTICE.
- 2. MATERIALS:
 - A. REINFORCING STEEL: ASTM A615, GRADE 60, UNCOATED
- 3. LAP CONTINUOUS REINFORCING BARS 48 BAR DIAMETERS, UNLESS NOTED OTHERWISE. PROVIDE CORNER BARS FOR ALL HORIZONTAL REINFORCEMENT. PROVIDE CORNER BARS OR HOOK BARS (90 OR 180 DEGREE) AT THE END OF ALL HORIZONTAL REINFORCEMENT IN WALLS. A615 STEEL IS NOT TO BE WELDED TO OTHER STEEL MEMBERS.
- 4. REINFORCEMENT COVER:
 - FOOTINGS 3 INCHES TO EARTH
 - SLABS 2 INCHES TO FORMED SURFACE
 - FORMED SURFACE:
 - EXTERIOR FACE 1 1/2 INCHES, #5 BAR AND SMALLER
 - INTERIOR FACE 1/2 INCHES FOR SLABS AND WALLS
 - 1/2 INCHES FOR BEAMS AND COLUMNS
- 5. REINFORCING STEEL A615 MAY NOT BE WELDED TO OTHER STEEL ELEMENTS. (ACI 3.5.2)
- 6. REBAR SHALL BE LAPPED PER THE LAP SPLICE LENGTH SCHEDULE BELOW FOR EACH CONCRETE ELEMENT:

BAR SIZE	MIN. LAP LENGTH
#4	2'-6"
#5	3'-0"
#6	4'-6"

- 7. HOOKS SHALL BE FABRICATED PER TABLE BELOW:

Type of standard hook	Bar size	Minimum inside bend diameter, in.	Straight extension ⁽¹⁾ l _{ext} , in.	Type of standard hook
90-degree hook	No. 3 through No. 8	6d _b	12d _b	
	No. 9 through No. 11	8d _b		
	No. 14 and No. 18	10d _b		
180-degree hook	No. 3 through No. 8	6d _b	Greater of 4d _b and 2.5 in.	
	No. 9 through No. 11	8d _b		
	No. 14 and No. 18	10d _b		

⁽¹⁾A standard hook for deformed bars in tension includes the specific inside bend diameter and straight extension length. It shall be permitted to use a longer straight extension at the end of a hook. A longer extension shall not be considered to increase the anchorage capacity of the hook.

CONCRETE

- 1. REFERENCE STANDARDS: ACI-301 AND ACI-318.
- 2. MINIMUM CONCRETE STRENGTH AT 28 DAYS: TANK/SLAB 4,500 PSI
- 3. THE WATER/CEMENT RATIO SHALL NOT EXCEED: TANK/SLAB 0.45 (BY WEIGHT)
- 4. AGGREGATE GRADING SHALL COMPLY WITH AASHTO #57 GRADATION OR BETTER. PORTLAND CEMENT SHALL CONFORM TO ASTM C-150, TYPE II.
- 5. COMPLY WITH ACI-301 FOR MIXING. DO NOT EXCEED THE AMOUNT OF WATER SPECIFIED IN THE APPROVED MIX. PROPORTIONS OF AGGREGATE TO CEMENT SHALL BE SUCH AS TO PRODUCE A DENSE WORKABLE MIX WHICH CAN BE PLACED WITHOUT SEGREGATION OR EXCESSIVE FREE SURFACE WATER.
- 6. COMPLY WITH ACI-301 FOR PLACEMENT. PROVIDE A 3/8 INCH CHAMFER AT ALL EXPOSED CONCRETE EDGES, UNLESS INDICATED OTHERWISE IN THE DRAWINGS.
- 7. MAXIMUM SLUMP TO BE 4" ± 1". DO NOT ADD WATER TO THE MIX TO INCREASE SLUMP. GREATER SLUMP, ACCELERATED SET OR HIGH EARLY STRENGTH MAY BE ACHIEVED BY USING APPROVED ADMIXTURES.
- 8. COMPLY WITH ACI-305R FOR PLACEMENT IN HOT WEATHER AND ACI-306R FOR PLACEMENT IN COLD WEATHER.
- 9. PROVIDE AIR-ENTRAINMENT OF 5-1/2% +/- 1-1/2% FOR ALL CONCRETE

CAST-IN-PLACE GROUT

- 1. DRYPACK OF NON-SHRINK GROUT SHALL HAVE A MINIMUM 28-DAY COMPRESSIVE STRENGTH OF 3000 PSI, AND CONSIST OF MASTERFLOW 713, FIVE STAR GROUT, SIKA GROUT 212, OR APPROVED EQUAL. FOR THICK GROUT LAYERS FOLLOW MANUFACTURER'S GUIDELINES TO ATTAIN THE REQUIRED STRENGTH, WHICH MAY INCLUDE THE ADDITION OF PEA GRAVEL.

JOINT FILLER

- 1. HOT Poured SEALANT FOR CEMENT CONCRETE PAVEMENT SHALL MEET THE REQUIREMENTS OF ASTM D6690 TYPE IV, EXCEPT FOR THE FOLLOWING:
 - A. THE CONE PENETRATION AT 25°C SHALL BE 130 MAXIMUM.
 - B. THE EXTENSION FOR THE BOND, NON-IMMERSED, SHALL BE 100 PERCENT.
- 2. IN ALL CASES IN WHICH SAW CUTS OR CLEANING WITH A SAW ARE REQUIRED, THE SAW CUT SHALL BE MADE WITH A DIAMOND-EMBEDDED SAW BLADE.

WATERSTOP

- 1. WATERSTOPS SHALL BE FLEXIBLE PVC EXTRUDED FROM VIRGIN MATERIAL. THE PVC COMPOUND SHALL NOT CONTAIN ANY SCRAPPED OR RECLAIMED MATERIALS OR PIGMENTS.
- 2. FIELD BUTT SPLICES SHALL BE FUSE WELDED USING A HEAT-SEALING METHOD IN ACCORDANCE WITH MANUFACTURER'S INSTRUCTIONS. LAPPING, GLUING, OR USE OF ADHESIVES SHALL NOT BE PERMITTED.
- 3. CENTER WATERSTOP IN THE JOINT AND SECURE WATERSTOP IN THE CORRECT POSITION USING HOG RINGS, GROMMETS, OR EYELETS SPACED AT 12" ON CENTER ALONG THE LENGTH OF THE PVC WATERSTOP AND WIRE TIED TO THE REINFORCING STEEL.

SHOP DRAWINGS AND SUBMITTALS

- 1. SUBMIT LAYOUT DRAWINGS FOR REVIEW OF:
 - A. REINFORCING STEEL
- 2. SUBMIT SPECIFICATIONS FOR REVIEW OF:
 - A. CONCRETE DESIGN MIX
 - B. WATERSTOPS
- 3. QUALITY CONTROL PLAN

SPECIAL INSPECTIONS

- 1. SPECIAL INSPECTIONS ARE TO BE PERFORMED BY INDEPENDENT, JURISDICTIONALLY APPROVED AGENCY IN ACCORDANCE WITH IBC SECTION 1701.2 AND PROVIDE THE DUTIES AND RESPONSIBILITIES AS INDICATED IN SECTION 1701.3.
- 2. CERTIFICATION TO BE BY THE SPECIAL INSPECTION AGENCY AND SUBMISSION TO OWNER IN ADDITION TO BUILDING OFFICIAL.
- 3. SPECIAL INSPECTION IS NOT A SUBSTITUTE FOR INSPECTION BY A JURISDICTIONAL INSPECTOR.
- 4. THE SPECIAL INSPECTIONS REQUIRED FOR THIS PROJECT ARE AS NOTED IN THE SUMMARY OF SPECIAL INSPECTION.

JOB SITE SAFETY

- 1. THE ENGINEER HAS NOT BEEN RETAINED OR COMPENSATED TO PROVIDE DESIGN AND/OR CONSTRUCTION REVIEW SERVICES RELATED TO THE CONTRACTOR'S SAFETY PRECAUTIONS OR TO MEANS, METHODS, TECHNIQUES OR PROCEDURES FOR THE CONTRACTOR TO PERFORM THE WORK. THE UNDERTAKING OF PERIODIC SITE VISITS BY THE ENGINEER SHALL NOT BE CONSTRUED AS SUPERVISION OF ACTUAL CONSTRUCTION NOR MAKE HIM RESPONSIBLE FOR PROVIDING A SAFE PLACE FOR THE PERFORMANCE OF THE WORK BY THE CONTRACTOR, SUB-CONTRACTOR OR ANY PERSON ON THE SITE.

SUMMARY OF SPECIAL INSPECTION

ITEM	INSPECTION REQUIRED	REMARK
GRADING AND EXCAVATION	VERIFY EXCAVATION TO PROPER DEPTH; PERIODIC INSPECTION	REFER TO GEOTECHNICAL REPORT
	VERIFY USE OF PROPER MATERIALS, DENSITIES AND LIFT THICKNESS DURING PLACEMENT AND COMPACTION OF FILL; CONTINUOUS INSPECTION	
CONCRETE	VERIFY MIX DESIGN SUPPLIED MEETS APPROVED MIX DESIGN; PERIODIC INSPECTION	REFER TO SPEC 03 30 00
	PLACEMENT OF CONCRETE, INCLUDES VERIFYING SLUMP AND AIR CONTENT TESTS; CONTINUOUS INSPECTION	REFER TO DRAWINGS; NOT REQUIRED FOR SITE-WORK CONCRETE
	PERFORM CYLINDER STRENGTH TESTS	TANK/SLAB - 4500 PSI
REINFORCING STEEL	VERIFY PLACEMENT, COVER AND BAR SIZE; PERIODIC INSPECTION	REFER TO DRAWINGS
	VERIFY GRADE; PERIODIC INSPECTION	ASTM A615, GRADE 60
EPOXY OR MECHANICAL ANCHORS	VERIFY INSTALLATION SIZE AND DEPTH; CONTINUOUS INSPECTION	REFER TO DRAWINGS OR MANUFACTURERS INSTALLATION INSTRUCTIONS
WATERSTOP	VERIFY PLACEMENT, BUTT SPLICES, FITTINGS; PERIODIC INSPECTION	REFER TO DRAWINGS AND MANUFACTURER'S INSTALLATION INSTRUCTIONS

ABBREVIATIONS

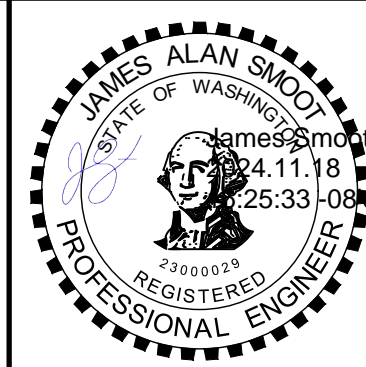
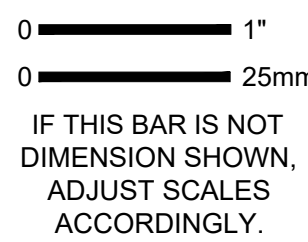
AASHTO	AMERICAN ASSOCIATION OF STATE HIGHWAY AND TRANSPORTATION OFFICIALS
ACI	AMERICAN CONCRETE INSTITUTE
AISC	AMERICAN INSTITUTE OF STEEL CONSTRUCTION
ASCE	AMERICAN SOCIETY OF CIVIL ENGINEERS
ASTM	AMERICAN SOCIETY OF TESTING AND MATERIALS
AWS	AMERICAN WELDING SOCIETY
B	BOTTOM
CLR	CLEAR
CONC	CONCRETE
CTRL	CONTROL
CRSI	CONCRETE REINFORCING STEEL INSTITUTE
CS	COUNTERSINK
CSBC	CRUSHED SURFACING BASE COURSE
DIA	DIAMETER
EA	EACH
EL	ELEVATION
EX	EXISTING
FH	FLAT HEAD
FNDN	FOUNDATION
FTG	FOOTING
Fy	YIELD STRENGTH
GR	GRADE
H	HORIZONTAL
HH	HEX HEAD
HL	HIGH TIDE LINE
IBC	INTERNATIONAL BUILDING CODE
MLLW	MEAN LOWER LOW WATER
NOAA	NATIONAL OCEANIC AND ATMOSPHERIC COMMISSION
O.C.	ON CENTER
PCF	POUNDS PER CUBIC FOOT
PROP	PROPOSED
PSF	POUNDS PER SQUARE FOOT
PSI	POUNDS PER SQUARE INCH
PVC	POLYVINYL CHLORIDE
REINF	REINFORCED
REQ'D	REQUIRED
RT	RECTANGULAR ALUMINUM SECTION
SS	STAINLESS STEEL
T	TOP
t	THICK
TESC	TEMPORARY EROSION SEDIMENT CONTROL
TRANS	TRANS
TYP	TYPICAL
UNO	UNLESS NOTED OTHERWISE
UHMW	ULTRA HIGH MOLECULAR WEIGHT POLYETHYLENE
VERT	VERTICAL
VIF	VERIFY IN FIELD
W/	WITH
WABO	WASHINGTON ASSOCIATION OF BUILDING OFFICIALS

ISSUE FOR BID

ANY PRINTS NOT BEARING THIS STAMP MAY HAVE BEEN PRINTED PRIOR TO ADVERTISING AND CANNOT BE CONSIDERED BID DOCUMENTS. USERS OF THIS DOCUMENT IN EDITABLE ELECTRONIC FORMATS ARE CAUTIONED AGAINST USE WITHOUT FIRST DETERMINING WHETHER CHANGES MAY HAVE BEEN MADE SUBSEQUENT TO ITS PREPARATION.

NO	BID ADDENDUM	DATE	BY
1	BID ADDENDUM 1	11/18/2024	JS
NO	REVISION	DATE	BY

SCALES



DESIGNED	DT
DRAWN	IK
CHECKED	JS

PORT OF PORT TOWNSEND
PORT TOWNSEND, WASHINGTON
**BOAT HAVEN BOATYARD
STORMWATER IMPROVEMENT PROJECT**

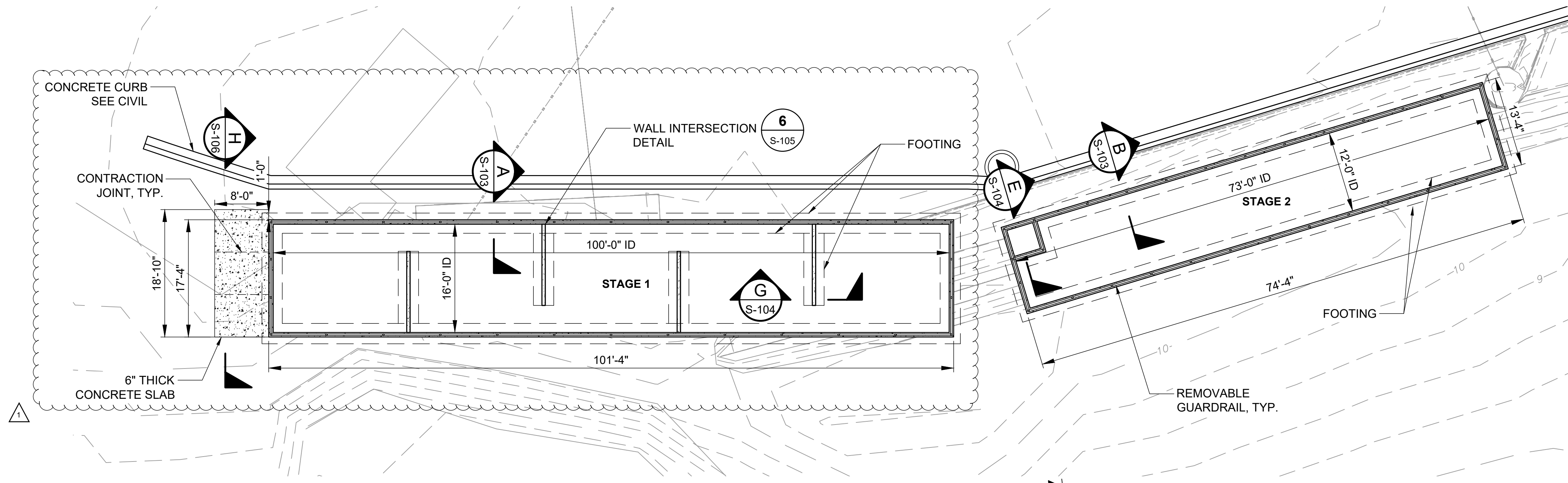


9706 4th Ave NE, Suite 300
Seattle, WA 98115
Tel 206.523.0024
www.facetnw.com

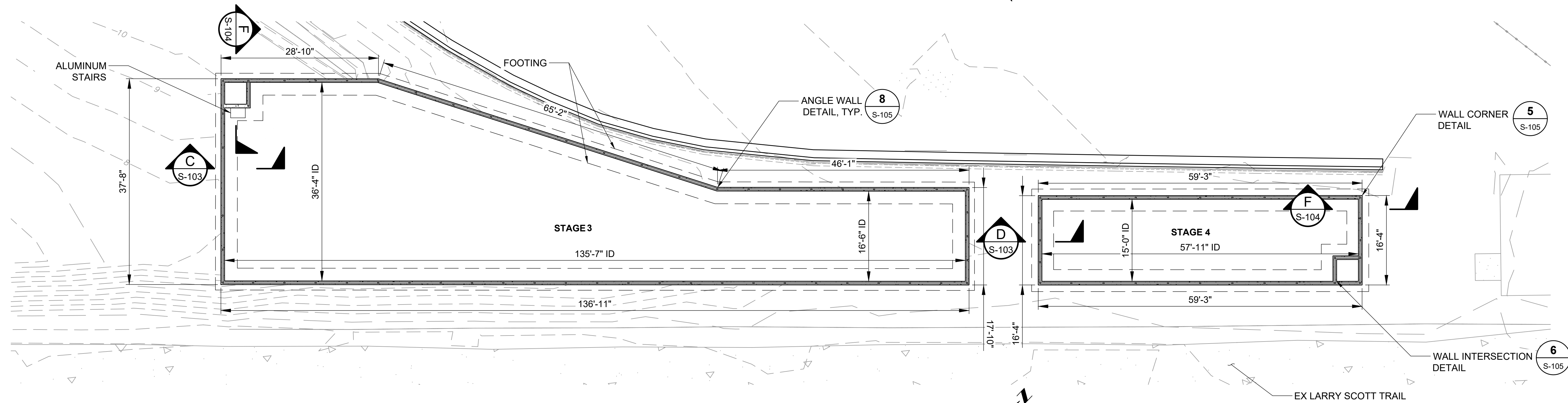
**STRUCTURAL
GENERAL NOTES**

SCALE	N/A
JOB NO	2297020.01
DATE	OCTOBER 2024
SHEET	28 OF 48
	S-001

NOTE:
SEE CIVIL FOR PROJECT CONTROL



1 WEST SITE PLAN
S-101 SCALE: 1" : 10'



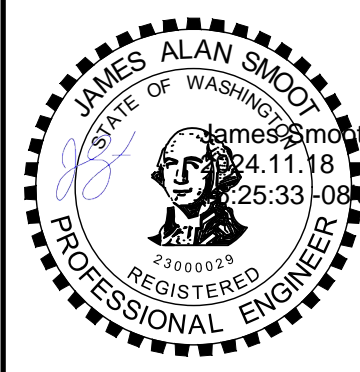
2 EAST SITE PLAN
S-101 SCALE: 1" : 10'

ISSUE FOR BID

ANY PRINTS NOT BEARING THIS STAMP MAY HAVE BEEN PRINTED PRIOR TO ADVERTISING AND CANNOT BE CONSIDERED BID DOCUMENTS. USERS OF THIS DOCUMENT IN EDITABLE ELECTRONIC FORMATS ARE CAUTIONED AGAINST USE WITHOUT FIRST DETERMINING WHETHER CHANGES MAY HAVE BEEN MADE SUBSEQUENT TO ITS PREPARATION.

NO	REVISION	DATE	BY
1	BID ADDENDUM 1	11/18/2024	JS

SCALES
0" = 1"
0" = 25mm
IF THIS BAR IS NOT DIMENSION SHOWN, ADJUST SCALES ACCORDINGLY.



DESIGNED DT
DRAWN IK
CHECKED JS

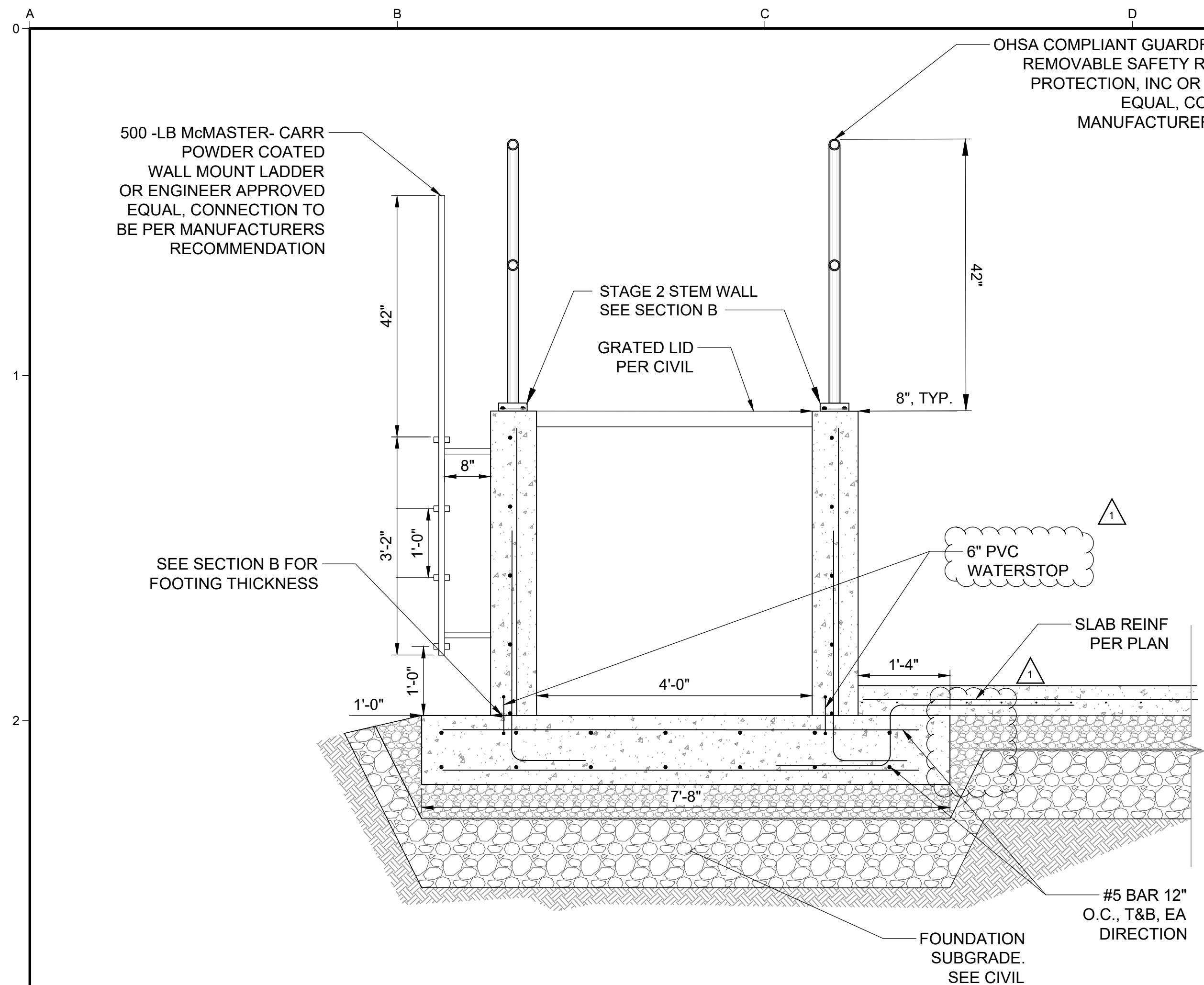
PORT OF PORT TOWNSEND
PORT TOWNSEND, WASHINGTON
BOAT HAVEN BOATYARD
STORMWATER IMPROVEMENT PROJECT



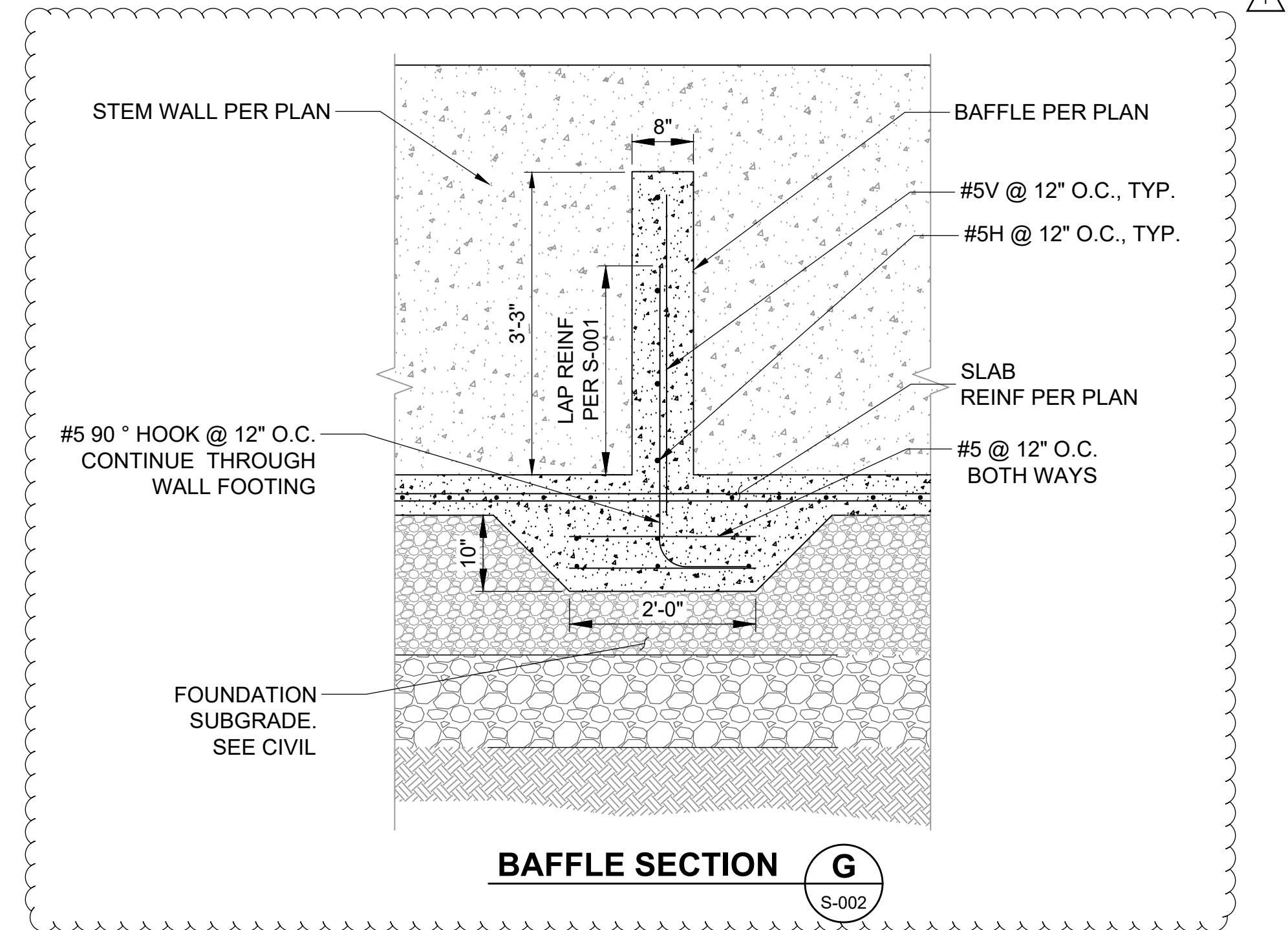
9706 4th Ave NE, Suite 300
Seattle, WA 98115
Tel 206.523.0024
www.facetnw.com

STORMWATER TREATMENT SYSTEM PLAN

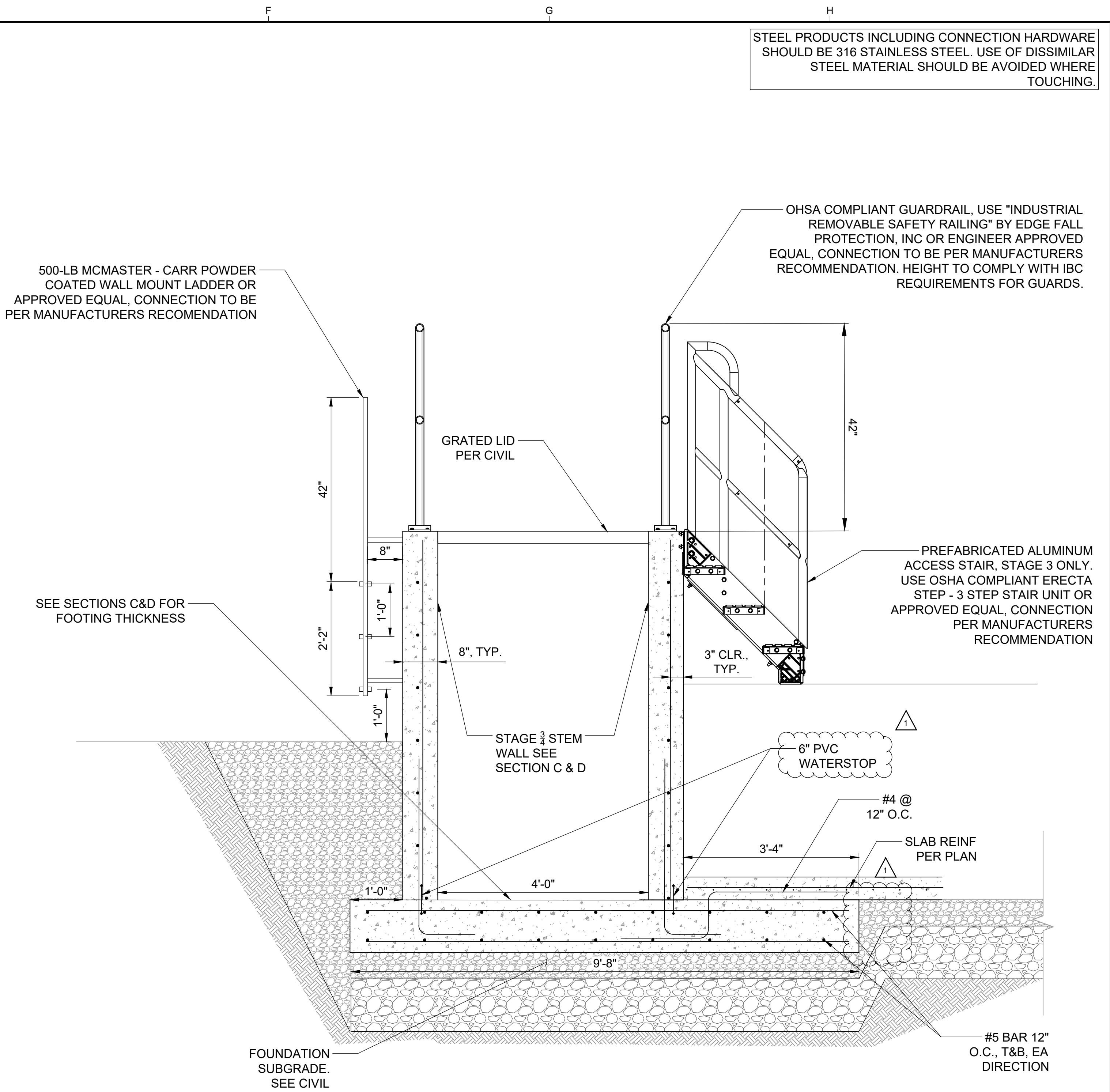
SCALE AS NOTED
JOB NO 2297020.01
DATE OCTOBER 2024
SHEET 30 OF 48
S-102



STAGE 2 ACCESS VAULT SECTION E
S-003



BAFFLE SECTION G
S-002



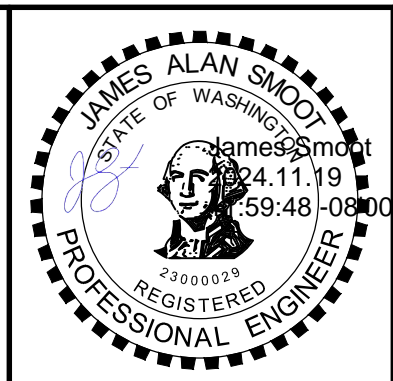
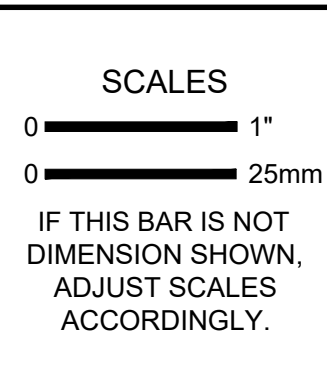
STAGE 3/4 ACCESS VAULT SECTION F
S-003

STEEL PRODUCTS INCLUDING CONNECTION HARDWARE SHOULD BE 316 STAINLESS STEEL. USE OF DISSIMILAR STEEL MATERIAL SHOULD BE AVOIDED WHERE TOUCHING.

ISSUE FOR BID

ANY PRINTS NOT BEARING THIS STAMP MAY HAVE BEEN PRINTED PRIOR TO ADVERTISING AND CANNOT BE CONSIDERED BID DOCUMENTS. USERS OF THIS DOCUMENT IN EDITABLE ELECTRONIC FORMATS ARE CAUTIONED AGAINST USE WITHOUT FIRST DETERMINING WHETHER CHANGES MAY HAVE BEEN MADE SUBSEQUENT TO ITS PREPARATION.

NO	REVISION	DATE	BY
1	BID ADDENDUM 1	11/18/2024	JS



DESIGNED	DT
DRAWN	IK
CHECKED	JS

PORT OF PORT TOWNSEND
PORT TOWNSEND, WASHINGTON

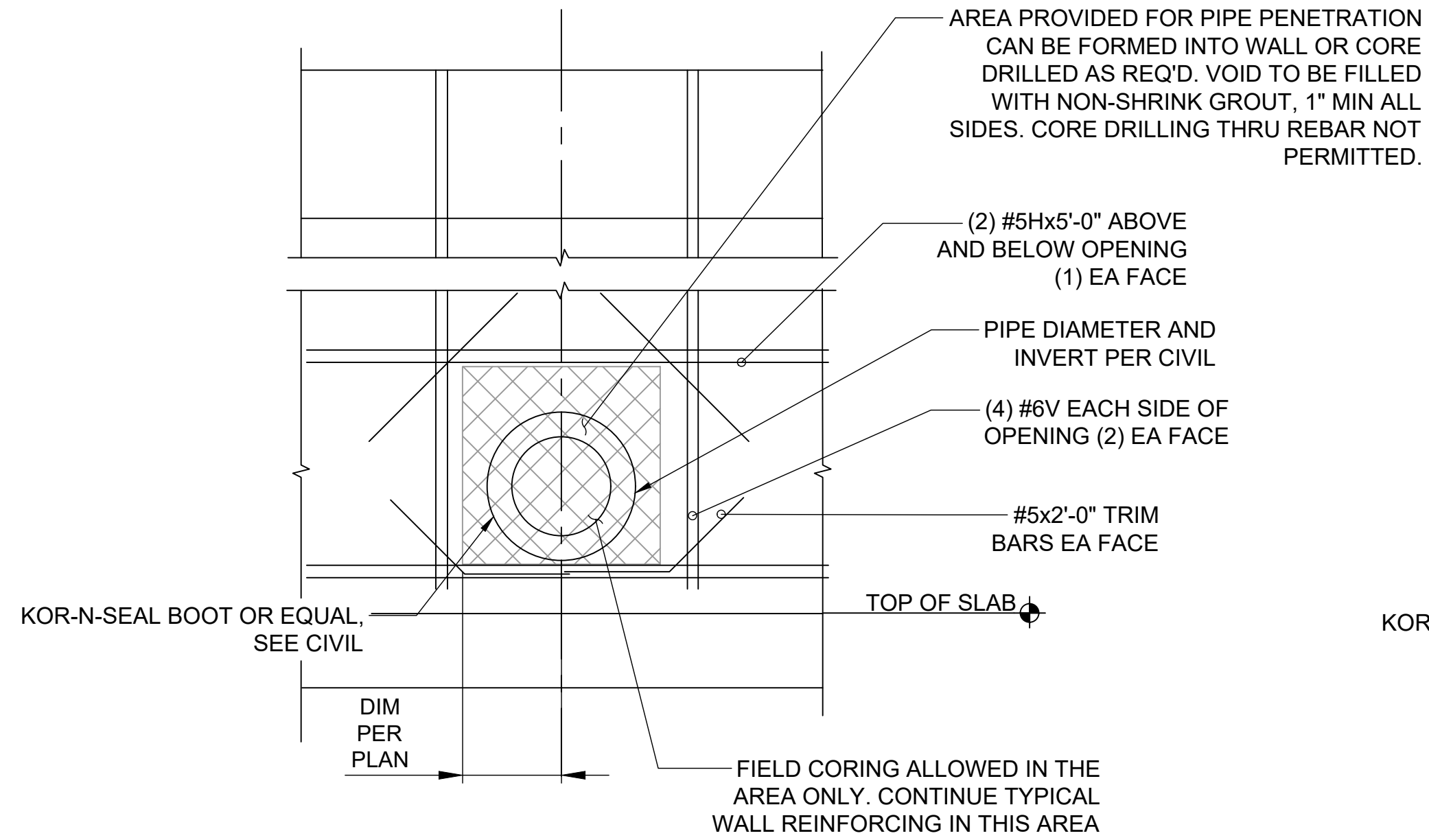
**BOAT HAVEN BOATYARD
STORMWATER IMPROVEMENT PROJECT**

KJ Kennedy Jenks **FACET**

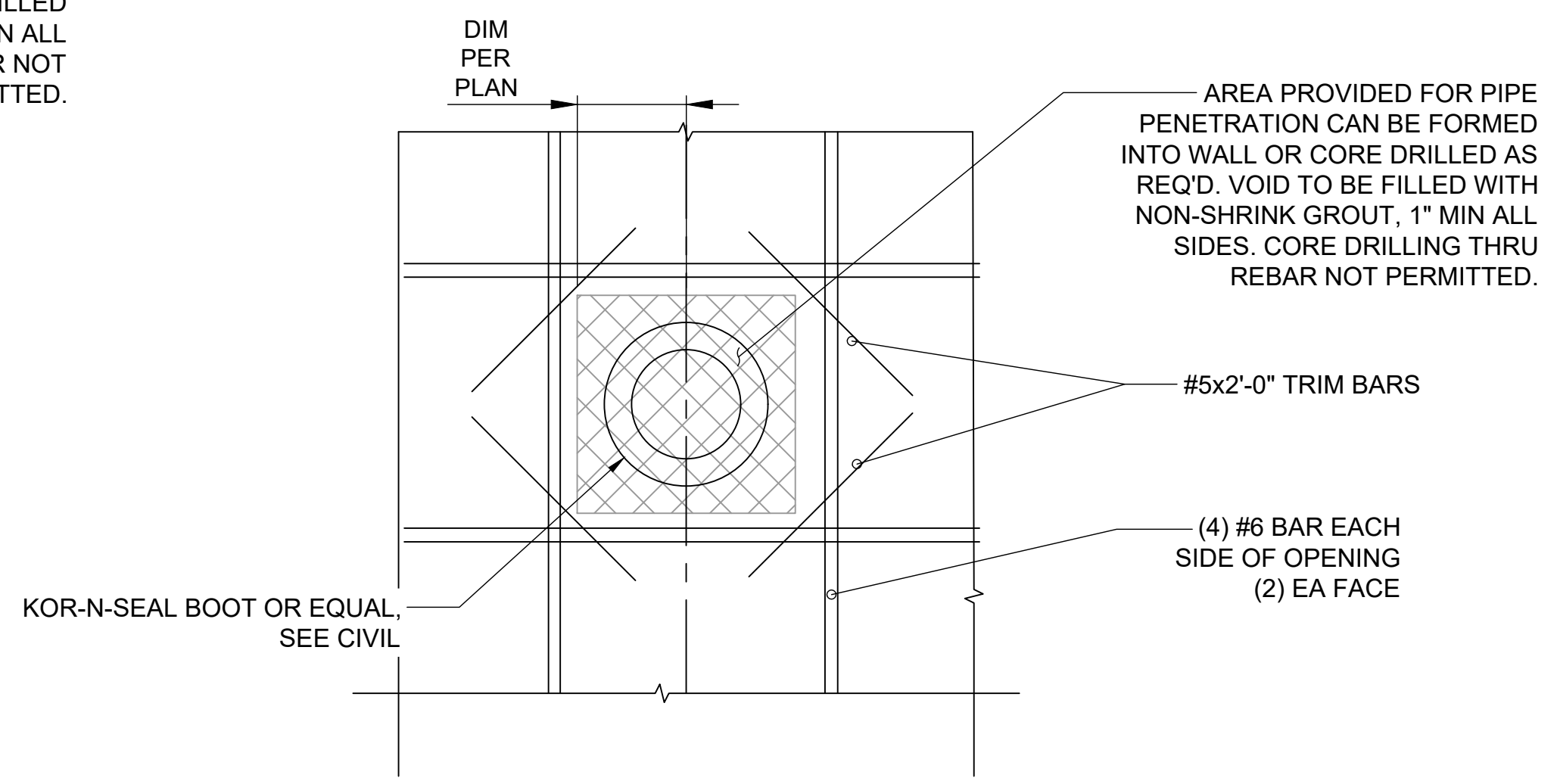
9706 4th Ave NE, Suite 300
Seattle, WA 98115
Tel 206.523.0024
www.facetnw.com

**STORMWATER TREATMENT
SYSTEM SECTIONS - II**

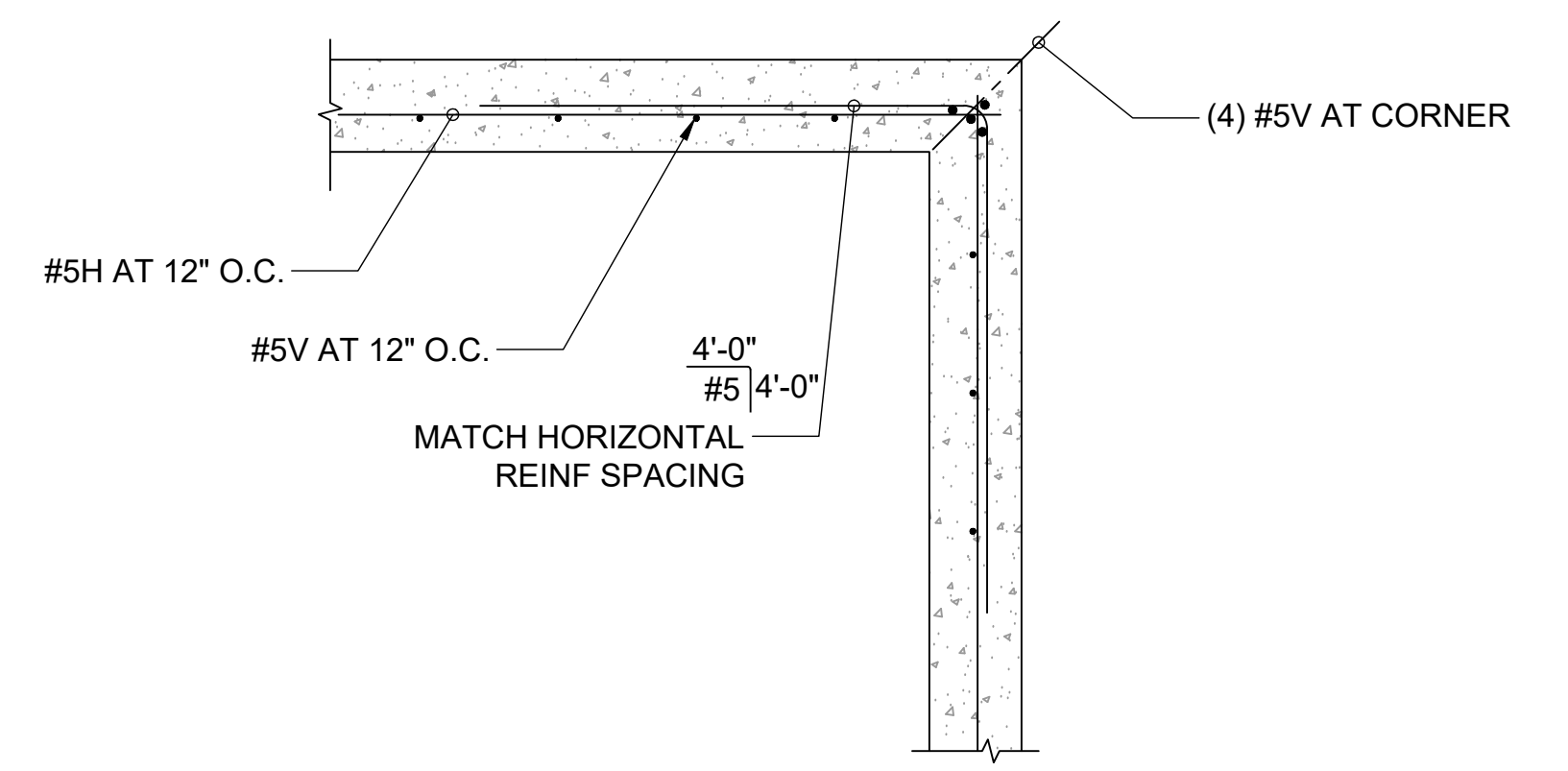
SCALE	0.75" = 1"
JOB NO	2297020.01
DATE	OCTOBER 2024
SHEET	32 OF 48



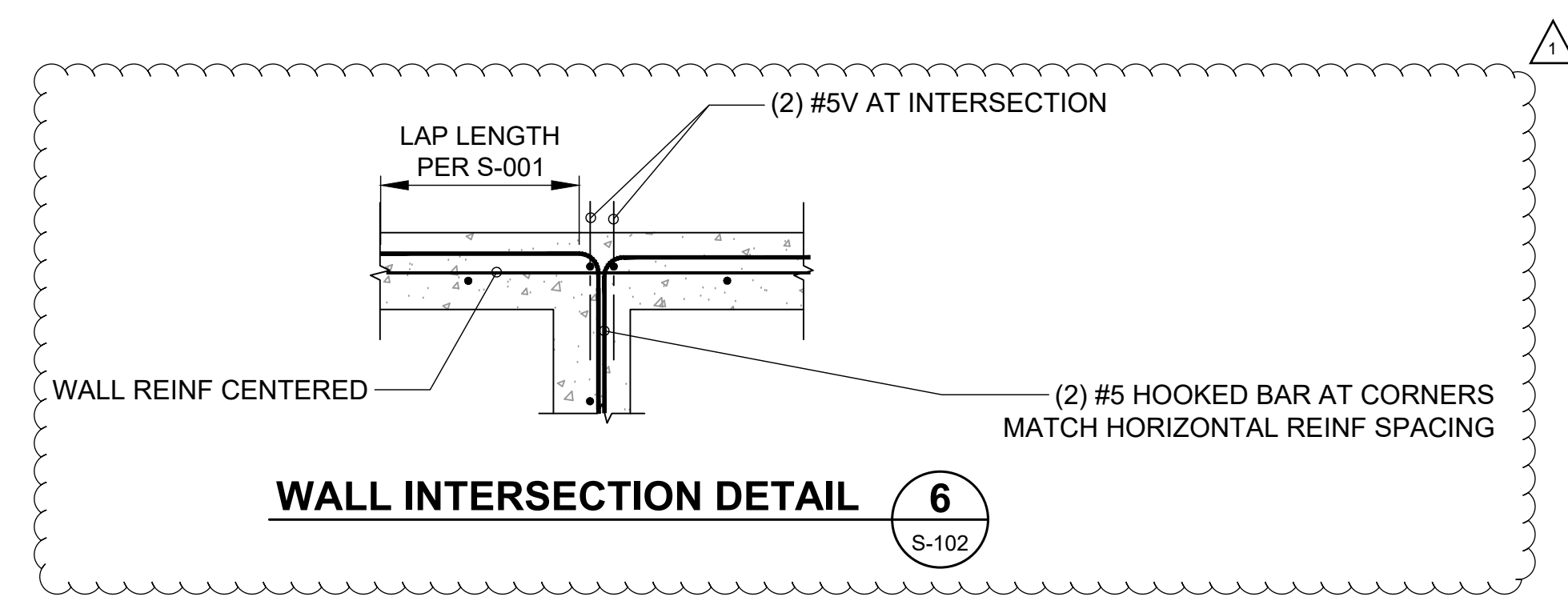
HORIZONTAL PIPE - WALL PENETRATION 3
VAR



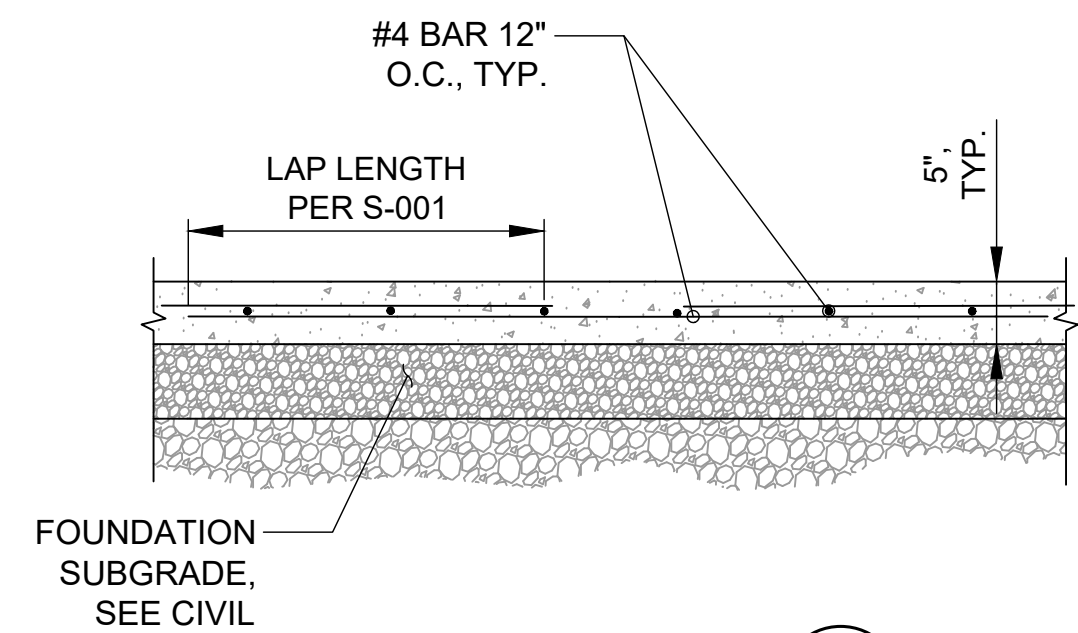
VERTICAL PIPE - FOOTING/SLAB PENETRATION 4
VAR



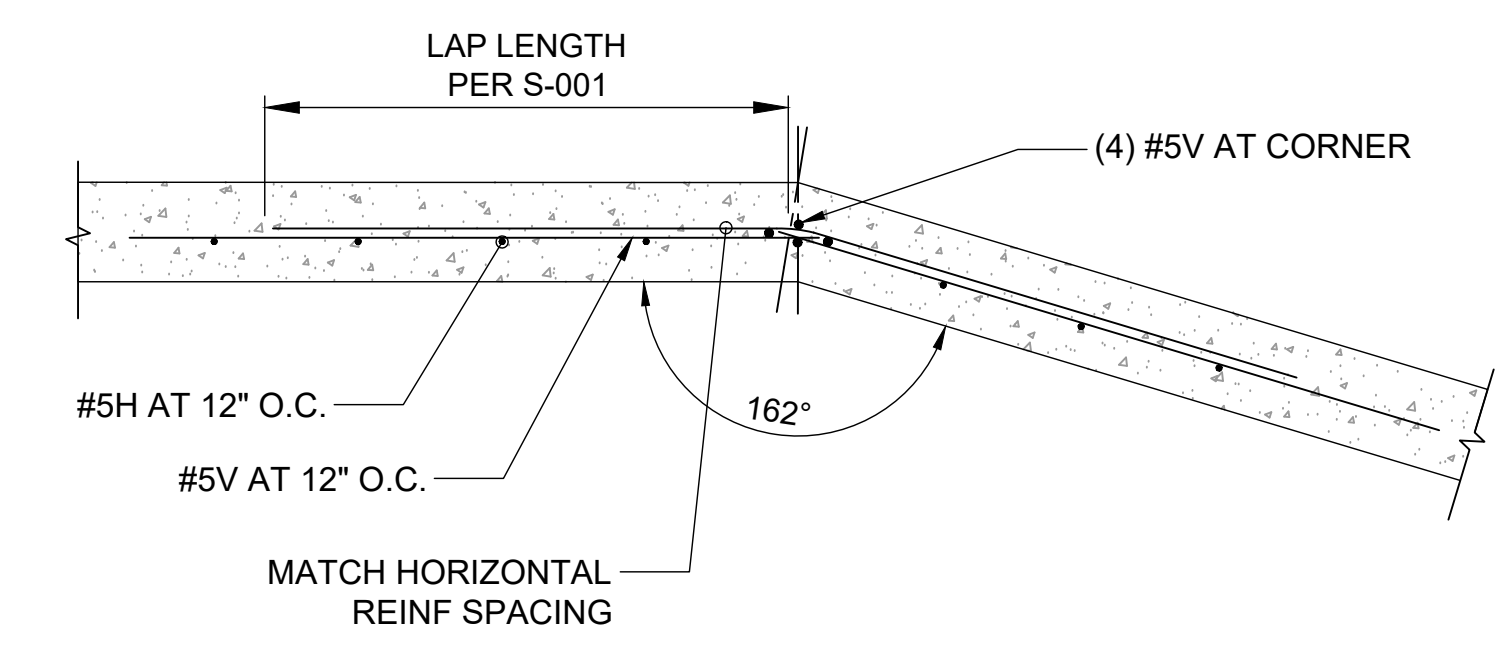
WALL CORNER DETAIL 5
S-105



WALL INTERSECTION DETAIL 6
S-102



SLAB DETAIL 7
S-102

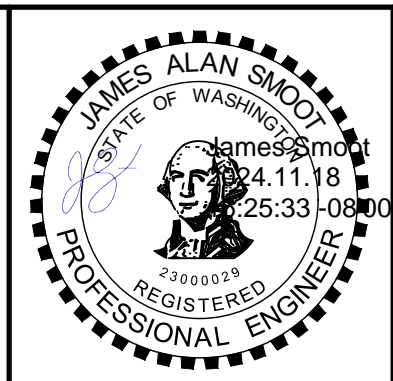


WALL ANGLE DETAIL 8
S-102

ISSUE FOR BID			
1	BID ADDENDUM 1	11/18/2024	JS
NO	REVISION	DATE	BY

NO	REVISION	DATE	BY
----	----------	------	----

SCALES
 0" = 1"
 0" = 25mm
 IF THIS BAR IS NOT DIMENSION SHOWN, ADJUST SCALES ACCORDINGLY.



DESIGNED DT
 DRAWN IK
 CHECKED JS

PORT OF PORT TOWNSEND
 PORT TOWNSEND, WASHINGTON
**BOAT HAVEN BOATYARD
 STORMWATER IMPROVEMENT PROJECT**

KJ Kennedy Jenks **FACET**

9706 4th Ave NE, Suite 300
 Seattle, WA 98115
 Tel 206.523.0024
 www.facetnw.com

**STORMWATER TREATMENT
 SYSTEM DETAILS**

SCALE	AS NOTED
JOB NO	2297020.01
DATE	OCTOBER 2024
SHEET	33 OF 48
	S-105