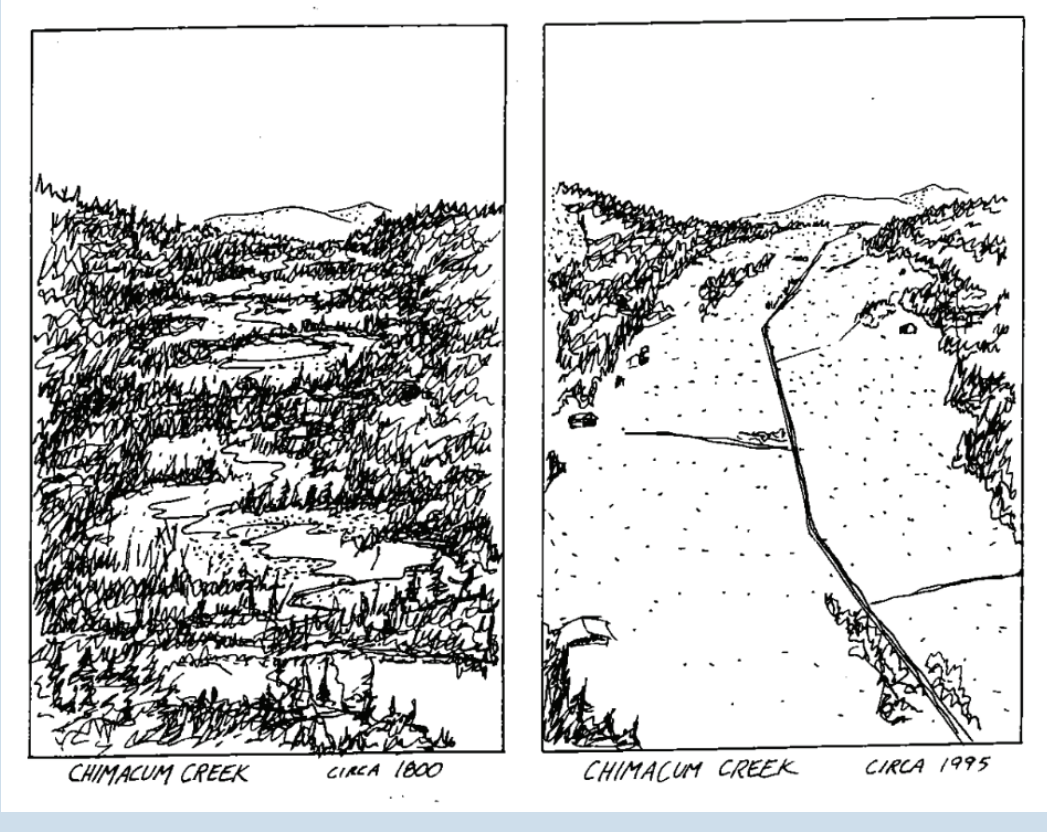


CREEK MANAGEMENT



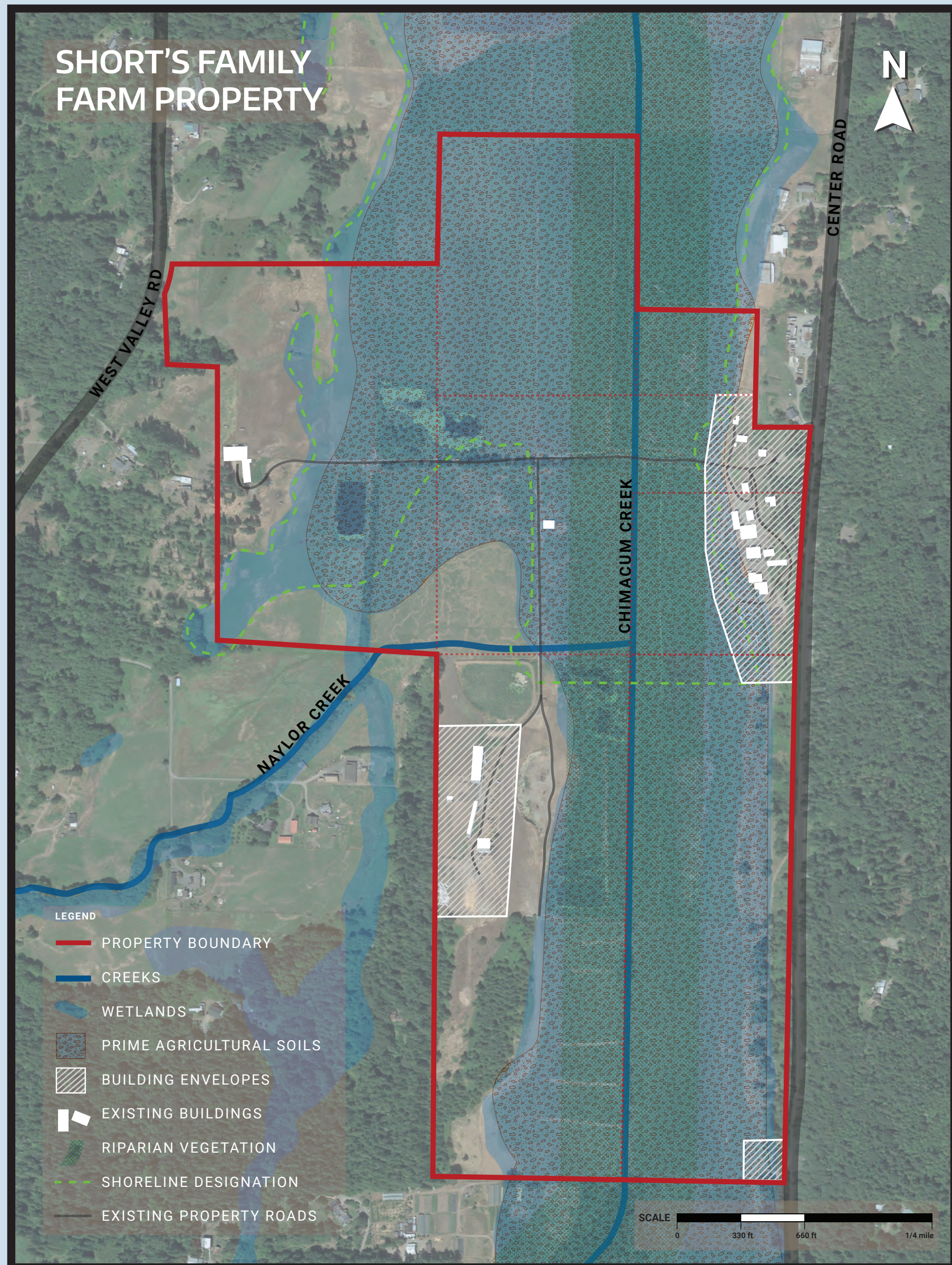
Artistic rendering of Chimacum Creek before & after channelization



Restoration by re-meandering a part of Chimacum Creek



The property in dry season, 2016



Chimacum Creek during peak flood, with reed canarygrass present, January 2024

What are the creeks on the property?

- One mile of Chimacum Creek (west branch) runs through the property towards Port Townsend Bay
- This portion of Chimacum was channelized (dredged and straightened) for agricultural purposes in the 1970s
- Naylor Creek feeds into Chimacum Creek on the property
- Both are observed salmon-bearing creeks and are designated as 'critical areas' in Jefferson County

What are the current maintenance issues?

- The natural slope of Chimacum is very low, causing slow flow
- Reed canarygrass, a noxious weed, out-grows all other species along the buffers of Chimacum Creek, causing a slower flow of water and increased silting
- Perennial flooding of the creek creates a ripe environment for reed canarygrass and other species, limiting farm land capacity

What is the Jefferson County Drainage District (JCDD)?

- The JCDD was formed in 1919 for the purposes of maintaining waterways to protect properties from flooding
- The JCDD dissolved in 1974 after commissioners left the board
- There is a movement for the JCDD to be reinstated, which is currently in a public engagement phase to create a plan for how the new JCDD will operate

What opportunities are there to improve the health of the creeks?

COMMUNITY & ECONOMIC DEVELOPMENT



Farming has been a key economic activity in the Jefferson County community



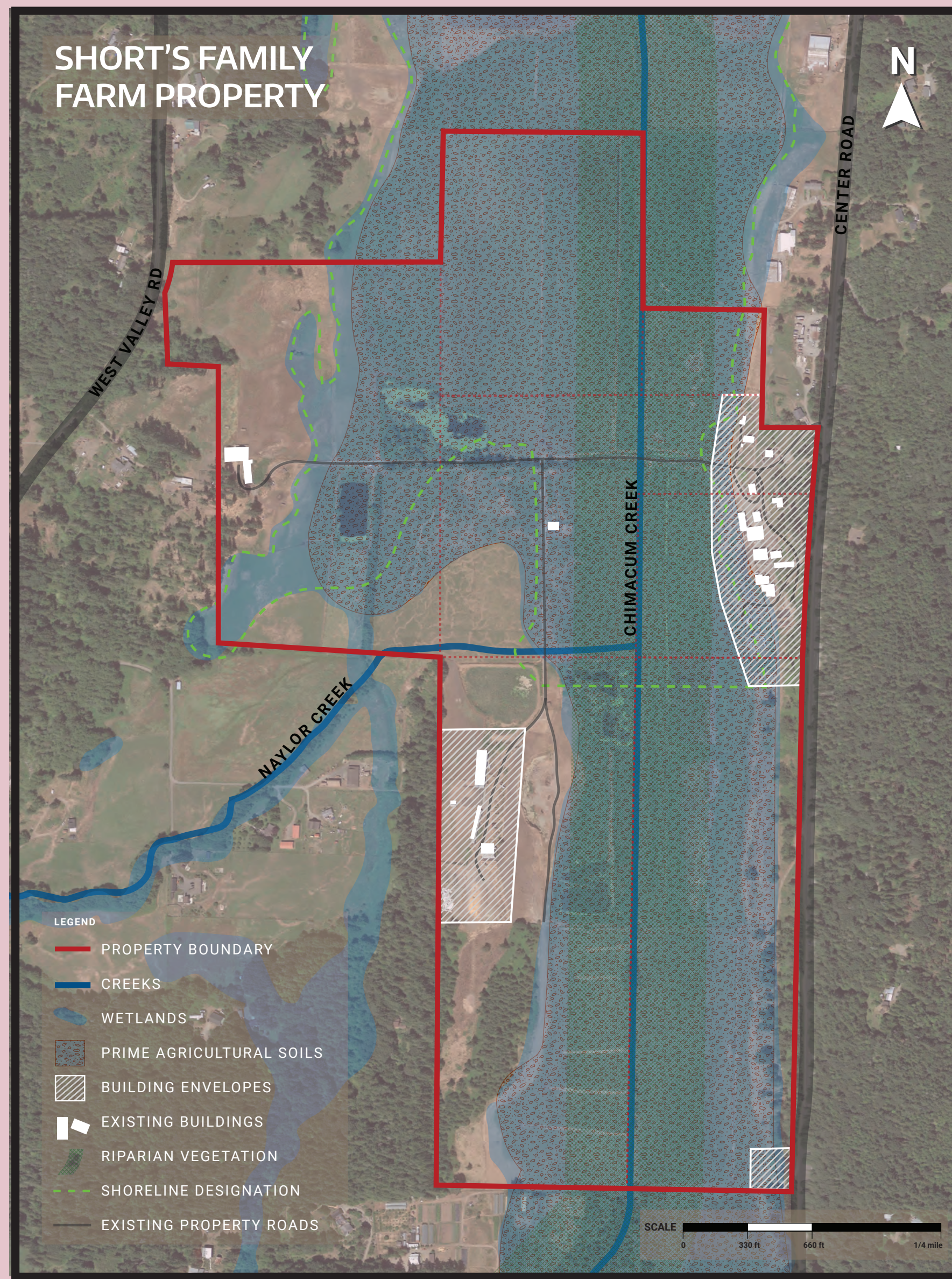
Farm dinners, a popular agri-tourism activity



Example of value-added farm products



Cooperative farming is a popular model for sharing resources amongst small farmers



Farm stores are a traditional way of making agricultural products available to the local community

What is community & economic development?

- Promoting social and wealth generating activities to make the community a better place for all residents
- Either for specific businesses and industries, or the coordination of organizations and events that directly support community activities (schools, churches, local organizations, etc.)

How does community & economic development relate to Short's Farm?

- Short's Farm has been a productive dairy and livestock farm for over 70 years, with beef and soil being the main products currently sold
- The farm is designated as a vital resource for the regional food system, with some of the largest tracts of farmland in the area

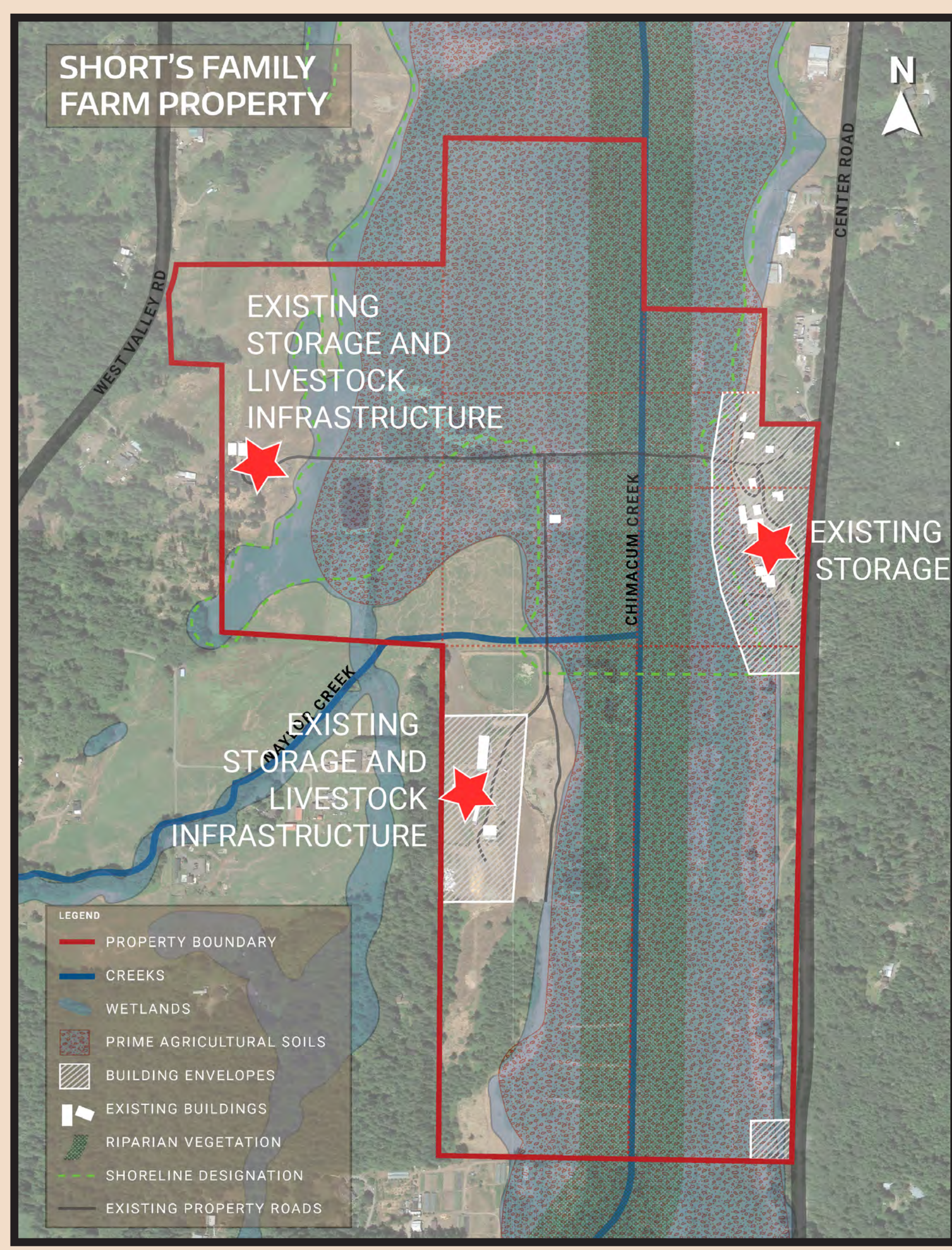
What community & economic development activities could or should occur on the Short's Farm property in the future?

Below are a list of encouraged economic development activities per the Jefferson County Comprehensive Plan:

- Businesses that pay living wages, provide skills-based training, mitigate environmental impacts, or add value to natural resources
- Programs/businesses that strengthens local food systems
- Businesses producing value-added products
- Innovative agriculture ventures and tech
- Agri- and eco-tourism

What opportunities for community & economic development are most exciting?

AGRICULTURE



What has been grown on this property in the past?

- The property has been used as a farm since the 1880s, primarily operating as a dairy. It has also been used to raise beef cattle and for the retail production of topsoil.

What could be grown on this property in the future?

- The property's zoning, the conditions of the Conservation Easement, and the terms of the Port's acquisition allow for broad agricultural use
- Some examples of approved agricultural uses include: horticulture, viticulture (wine), floriculture, dairy, apiary, vegetable and animal products

Are there any limitations to future agricultural activities on the farm?

- While the Conservation Easement and the Port's terms of acquisition encourage broad agricultural use, some uses may affect other priorities, such as wildlife conservation

Who in this community would most benefit from use of the farm?

- How could members of the agricultural community successfully share the property with each other and use it to meet their goals?

What are some of the best opportunities for future agricultural activity on the farm?

WILDLIFE



Bufflehead enjoy open-water wetland



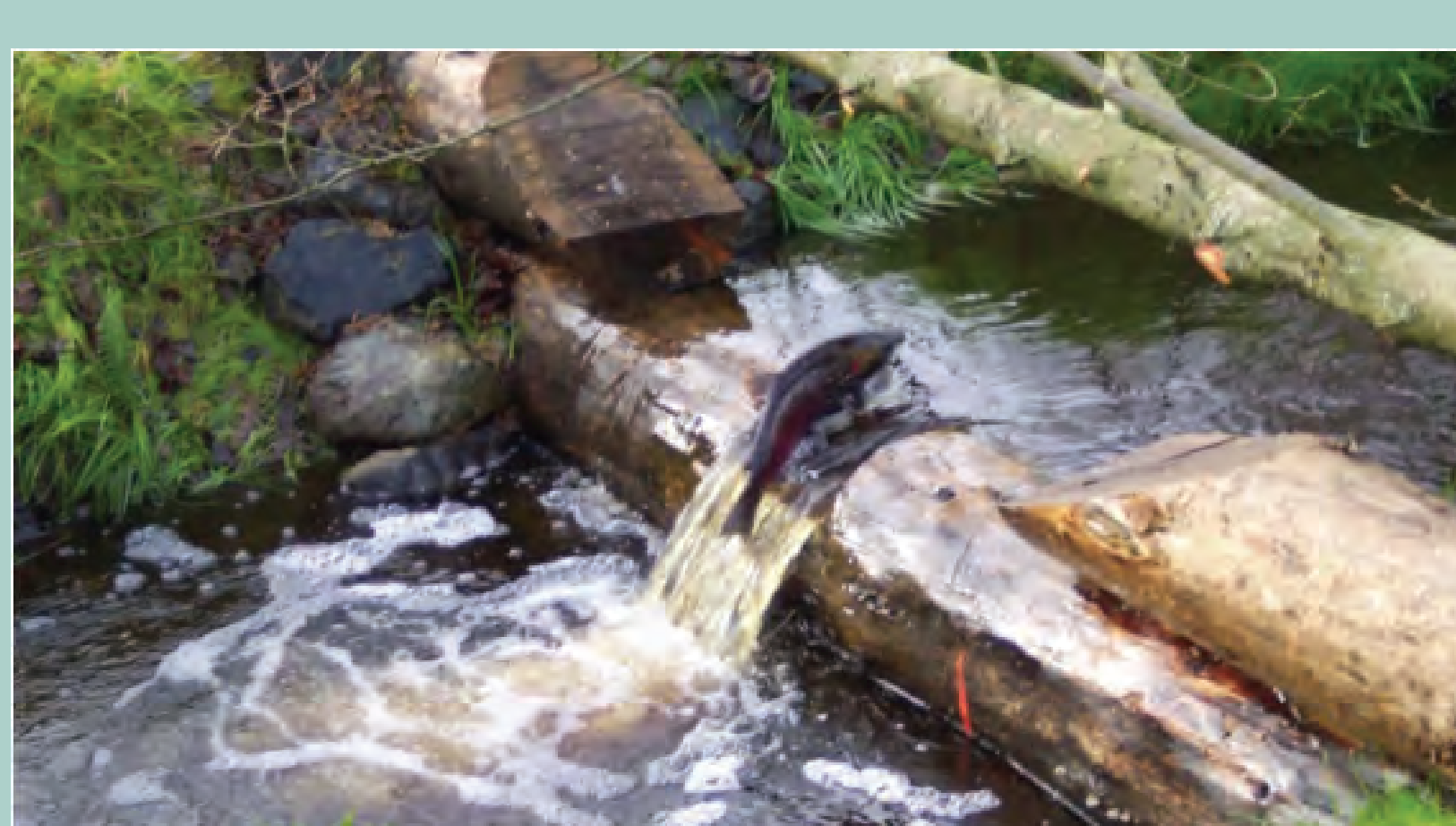
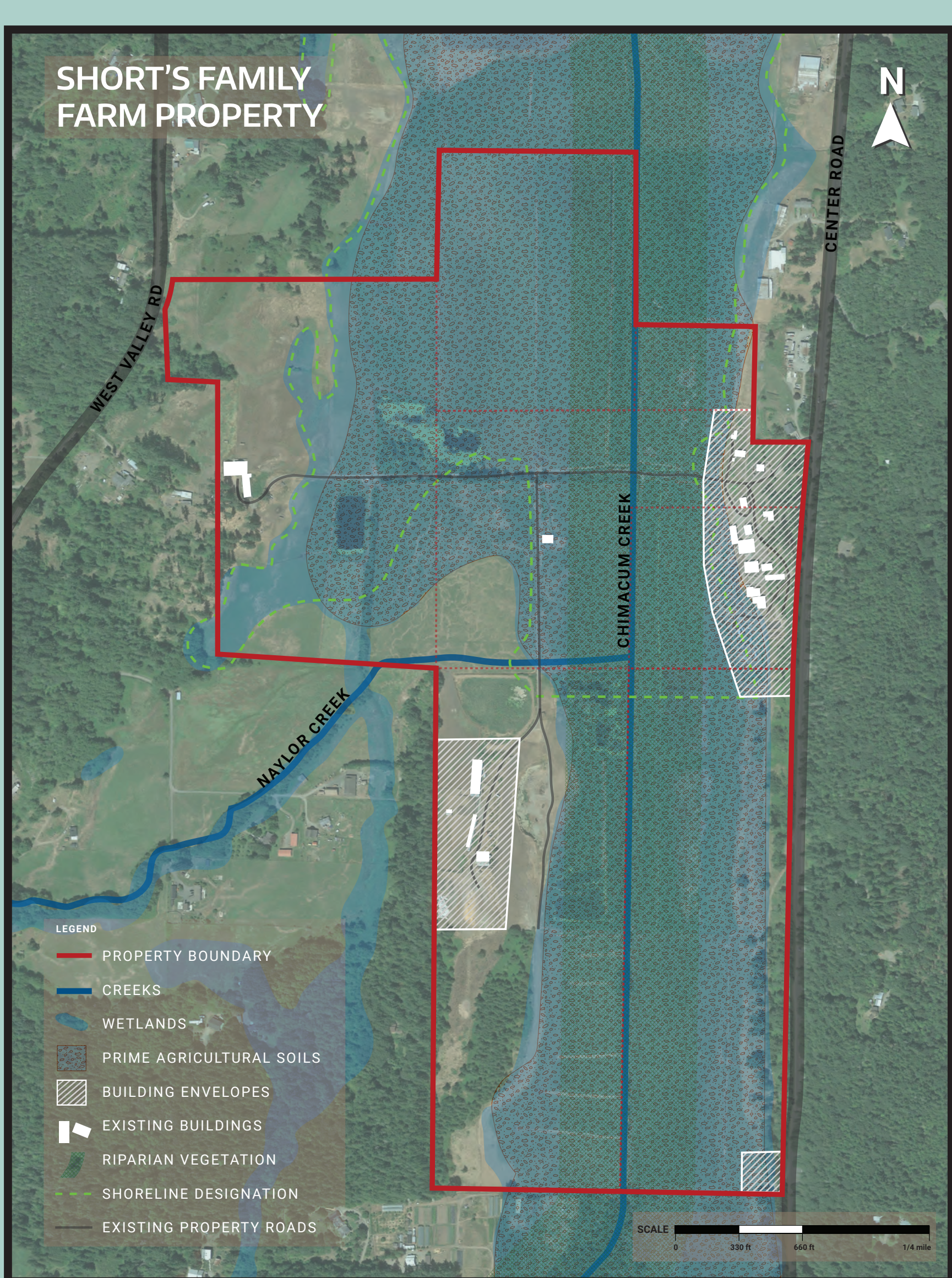
The Creeks are flanked by pasture, with hundreds of migratory geese (above)



Wetlands offer wildlife and hunting opportunities



Coho Salmon are native to the region



Salmon migrate up Putansuu Creek to their historic spawning grounds

What kinds of wildlife may be found on Short's Farm?

- Salmon (Coho, Chum, Pink), Trout (Coastal Rainbow and Cutthroat), Trumpeter Swans, geese and other waterfowl; beaver has not been observed on Short's Farm but is present in other parts of Chimacum

I heard salmon used to migrate through both creeks on the property on the way to their spawning grounds. Do salmon still migrate through Short's Farm?

- The conditions of Chimacum and Naylor Creeks are poor in nutrient balance and obstructed with plants and bio-debris, making migration difficult if not impossible for salmon

How could wildlife conservation efforts on the property benefit the Chimacum community?

- Conserving wildlife habitat enhances the ecological landscape of Chimacum's farmlands and forests and provides various ecosystem services through natural biodiversity
- Economic and cultural, as well as potential agricultural benefits

Are there opportunities for hunting on the property?

- The Farm partners with the WA Dept of Fish & Wildlife to allow seasonal waterfowl hunting
- Significant revenue comes from the hunting agreement and activities

What opportunities related to wildlife do you find most exciting?