



**Port of Port Townsend  
Public Workshop  
Wednesday, June 12, 2024, 9:30 AM**

**To be held in person at the Point Hudson Pavilion Building, 355 Hudson Street, Port Townsend  
and also online**

**Via <https://zoom.us/> – or call (253) 215-8782, use Webinar ID: 862 6904 3651, Password: 911887**

**AGENDA**

- A. Climate Action Committee Goals (45 mins.)
- B. Quarter 2 Capital Improvement Project Update (1 hr.)
- C. Commissioner Roundtable (10 mins.)
- D. Public Comment (5 mins)

*This workshop is open to Commissioners, Management, other Port staff, Consultants and the public. It is not the opportunity to give public testimony, but if Commissioners request input from individuals in the audience, those people may speak. The principal purpose of the workshop is to allow Port staff and the Board of Commissioners to communicate with each other and/or Consultants, answer Commission questions, and get the Commission's opinions and input regarding the subject topic(s).*

# Presentation to Port of Port Townsend by Cindy Jayne, Vice Chair, Climate Action Committee



---

JUNE 12, 2024

# Agenda

---

- ❖ Climate Action Committee (CAC) Overview
- ❖ Brief Update on Recent Activities of CAC
- ❖ New Greenhouse Gas Emissions Goals
- ❖ New Carbon Sequestration Goals
- ❖ Request for each CAC Organization to Provide Planned Organizational Climate Activities every 2 years
- ❖ Port Resolution 700-19
- ❖ Brainstorm on Possible Port Climate Activities for 2024-2025

# Climate Action Committee Overview

---

- ❖ A Joint County/City Advisory Committee formed in 2009
- ❖ Has 7 organizational members (City, County, Port, PUD, Jefferson Healthcare, PTPC, Jefferson Transit), and 8 citizen members
- ❖ Meets every other month
- ❖ The Port has participated since the CAC's inception. Currently, Carol Hasse is Port Rep, with Eric Toews as backup



# Overview

---

In 2008, the City and County jointly adopted a goal to reduce Greenhouse Gas (GHG) emissions 80% below 1990 levels by 2050 (using a 2005 emissions inventory baseline)

In 2020, the CAC approved an updated [Inventory of 2018 GHG emissions](#)

# Recent Activities

---

Based on the inventory results, the CAC produced a report identifying top Greenhouse Gas Reduction Opportunities in 2021

Recommended High Impact Activities:

- **Increase Electric Vehicle Adoption**
- **Reduce Vehicle Miles Traveled**
- **Increase commercial & residential building efficiency and electrification**

# Recent Activities

---

In 2022, the CAC approved the 2001-2016 Forest and Tree GHG Inventory, which measured the net impact of carbon sequestration from our forests and trees.

- Includes the CO<sub>2</sub> sequestered by forests and trees, and the impacts from insect damage and fire. Also includes emissions from harvest.

# Updating Goals

---

Based on the 2018 emissions inventory data, climate science and policies, the CAC approved two new recommendations regarding emissions which the county approved as-is on 4/22/24:

**By 2030: Emissions 58.7% below 2018 levels**

**By 2050: Emissions 95% below 2018 levels**



# New Emissions Goal Rationale

---

The 2018 GHG inventory data showed we were making great progress locally:

**A 39% reduction from 1990 levels**, ahead of the 2020 goal of a 15% reduction.

However, **globally, we are not on track** to keep warming below the 1.5°C increase in temperature the IPCC and the Paris Agreement recommends.

# New Emissions Goal Rationale

---

For the 2030 goal, the CAC adopted the Science-Based Target for our fair share of global emissions to meet the Paris Agreement

- **A 58.7% reduction in GHG emissions from 2018 by 2030**

For the 2050 goal, the CAC recommends following the Washington State goal (consistent with Paris Agreement), **of a 95% reduction of emissions by 2050**



# Carbon Sequestration Goals

---

In 2022, the CAC approved the 2001-2016 Forest and Trees GHG Inventory

On 4/22/24, the BOCC also approved a goal for increasing the carbon sequestered by our forests and trees

Emissions from forest harvest is a significant percentage of human caused emissions in the County

# Carbon Sequestration Goals

---

**New Carbon Sequestration Goals for Jefferson County, excluding the Olympic National Park and Wilderness areas (ONPW)**

**By 2030: a 20% increase above the 2011-2016 baseline**

**By 2050: an additional 20% increase for a total of 40% increase above 2011-2016 baseline**

# Planned Organizational Climate Activities

---

CAC requests member organizations provide a summary of Planned Organizational Climate Activities related to reducing emissions (“mitigation”), and also to preparing for climate impacts (“adaptation”). Examples:

City:

Increase walkability and bike-ability throughout PT.

Use the Climate Risk Screening Tool where appropriate during planning and decision-making.

# Planned Organizational Climate Activities

---

## County:

Develop a Commute Trip Reduction Program

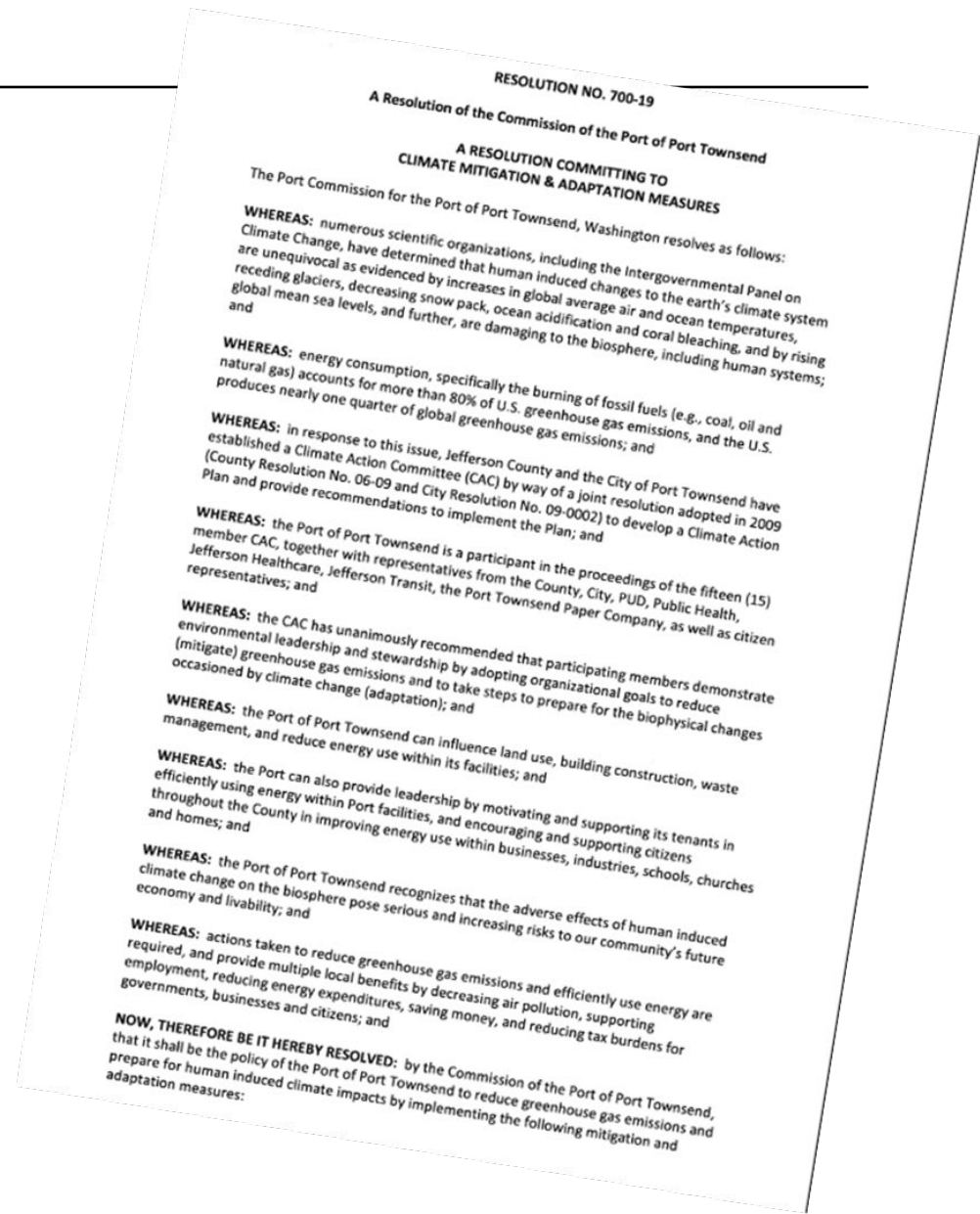
Manage County-owned land for multiple benefits, including carbon sequestration, storage and forest health via the Community Forestry Program

Conduct a Sea Level Rise Study to guide planning and development activities in response to anticipated sea level changes

# Port Climate Activities

Port Resolution No. 700-19:

*“it shall be the policy of the Port of Port Townsend to reduce greenhouse gas emissions and prepare for human induced climate impacts by implementing the following **mitigation** and **adaptation** measures . . . ”*





# Port-Adopted Mitigation Measures

---

- Prioritize energy efficiency repairs and upgrades to Port-owned buildings
- Prioritize fuel efficiency, durability and long-term reliability in the purchase of all Port vehicles/equipment
- Consider the use of biofuels and electrification in all future procurement decisions (consider total lifecycle operational costs)
- Establish/document adherence to a fleet vehicle maintenance schedule to optimize long service life
- Ensure all office equipment purchases are ENERGY STAR certified
- Progressively replace all lighting at Port facilities with energy efficient fixtures

# Port-Adopted Adaptation Measures

---

- Seek to diversify Port operations and lines of business in preparation for physical, environmental and economic dislocations
- Continue to explore opportunities to support expansion of the agricultural sector (e.g., processing, storage and distribution facility)
- Focus capital on maintaining the Boatyard – recognizing that the practical skills hosted there are vital to the community – both now, and in a future likely to be simpler and more local

# Port Climate Activities

---

- ❖ The previously adopted mitigation and adaptation measures could become the Port's Planned Organizational Climate Activities for 2024-2025, or they could be modified

# Possible Port Climate Activities - Emissions Reduction

- Installation of EV Charging stations for cars and boats, electrifying fleet



The screenshot shows the Washington State Department of Transportation website. The header is green with the WSDOT logo and name. The navigation menu includes Travel, Construction & planning, Business with WSDOT, Engineering & standards, and About. The breadcrumb trail is Home > Business with WSDOT > Grants > Port Electrification Grant. The main heading is "Port Electrification Grant" and the subtext reads: "Capital improvement grants for ports across the state to undertake projects that will reduce carbon emissions."

- Help develop local expertise in electric boats – design, maintenance, etc.

# Possible Port Climate Activities - Emissions Reduction

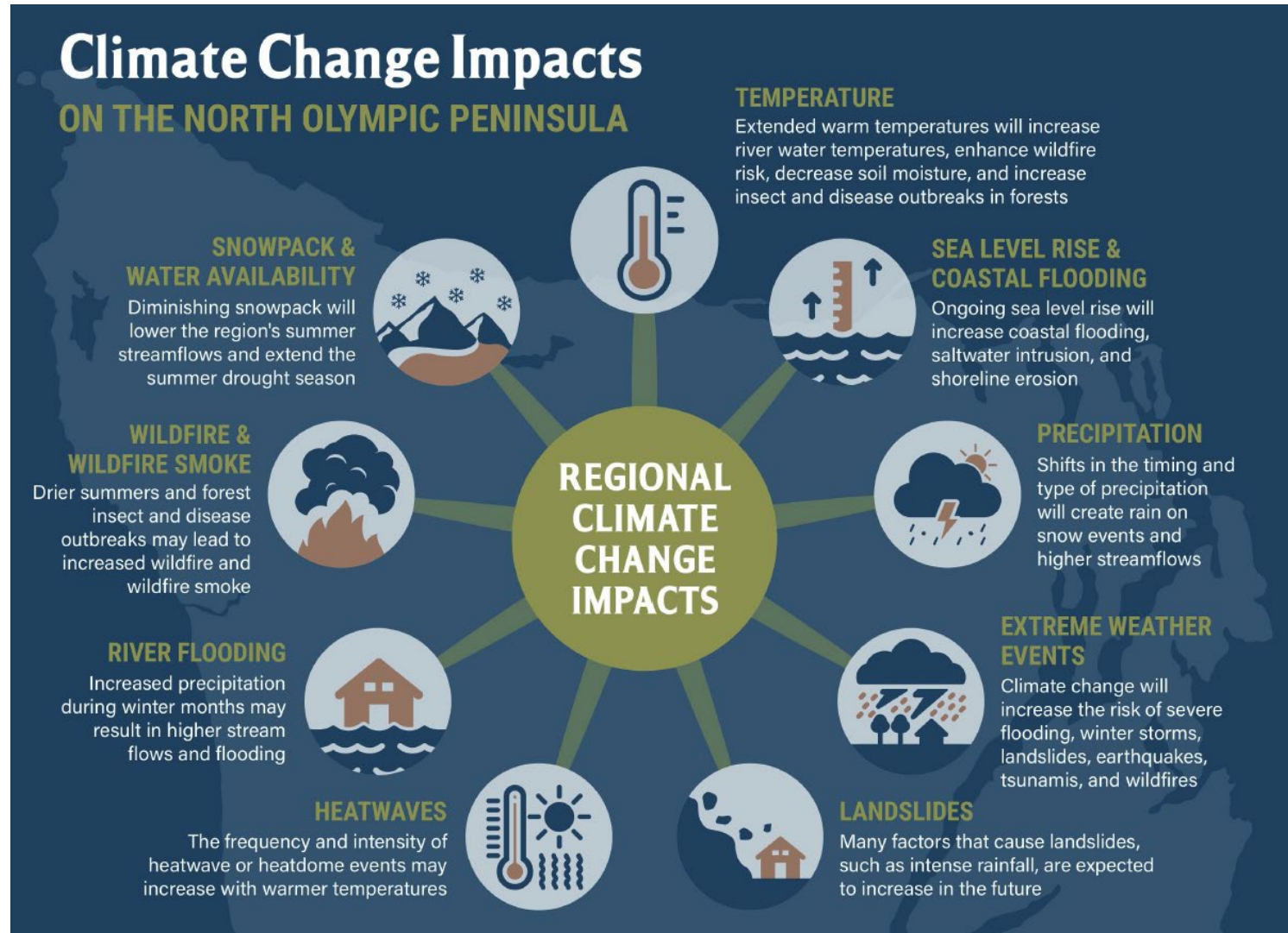
Page 21 of 34

---

- Employee commute reduction opportunities:
  - Help coordinate van pools or carpools, coordinate start times with bus schedule, etc.
- Take advantage of funding for conversion to more efficient heating:
  - Heat pumps, heat pump water heaters, etc.

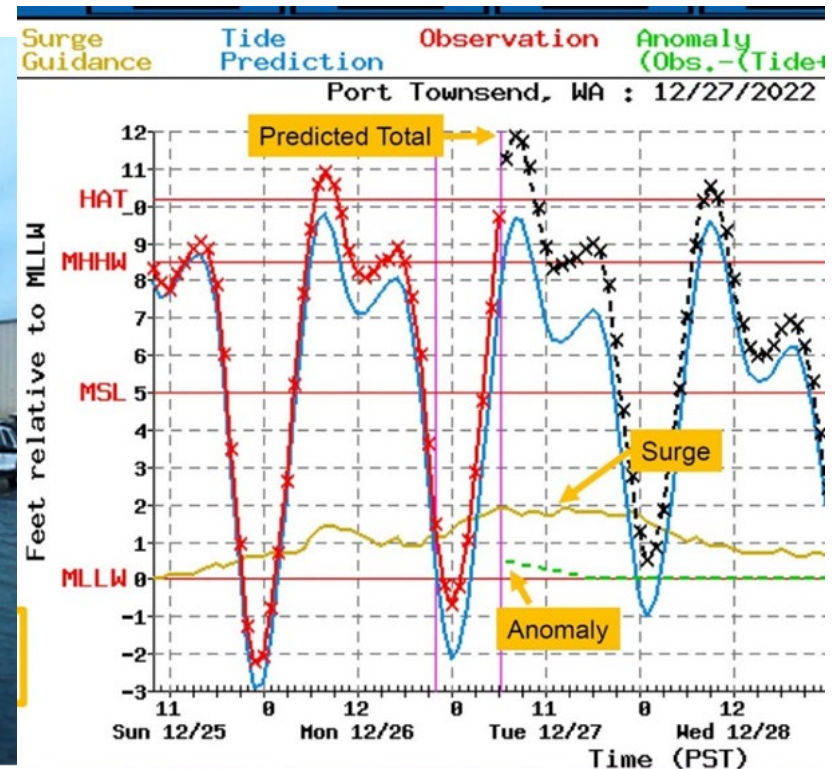
# Climate Change Impacts

## ON THE NORTH OLYMPIC PENINSULA



# Possible Port Climate Activities – Planning for Climate Impacts

- ❖ Possible adaptation additions:
  - ❖ Planning for sea level rise - Pilot an alert system for predicted tides/storm surge that might cause localized flooding?

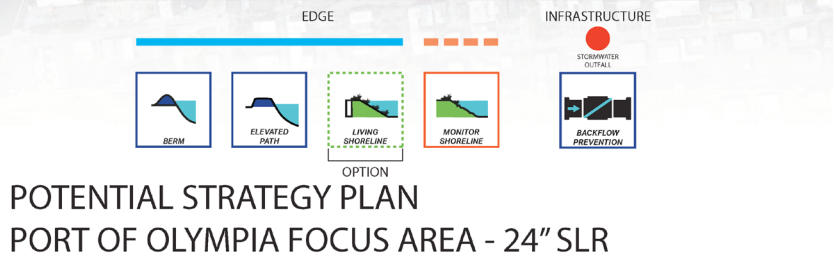




# Possible Port Climate Activities - Planning for Climate Impacts

Prepare for Sea Level Rise through coastal flooding adaptation mechanisms. Study near/mid/long term strategies.

Example from Olympia, WA, for 24" of Sea Level Rise (SLR)





# Brainstorming, opportunities to work together



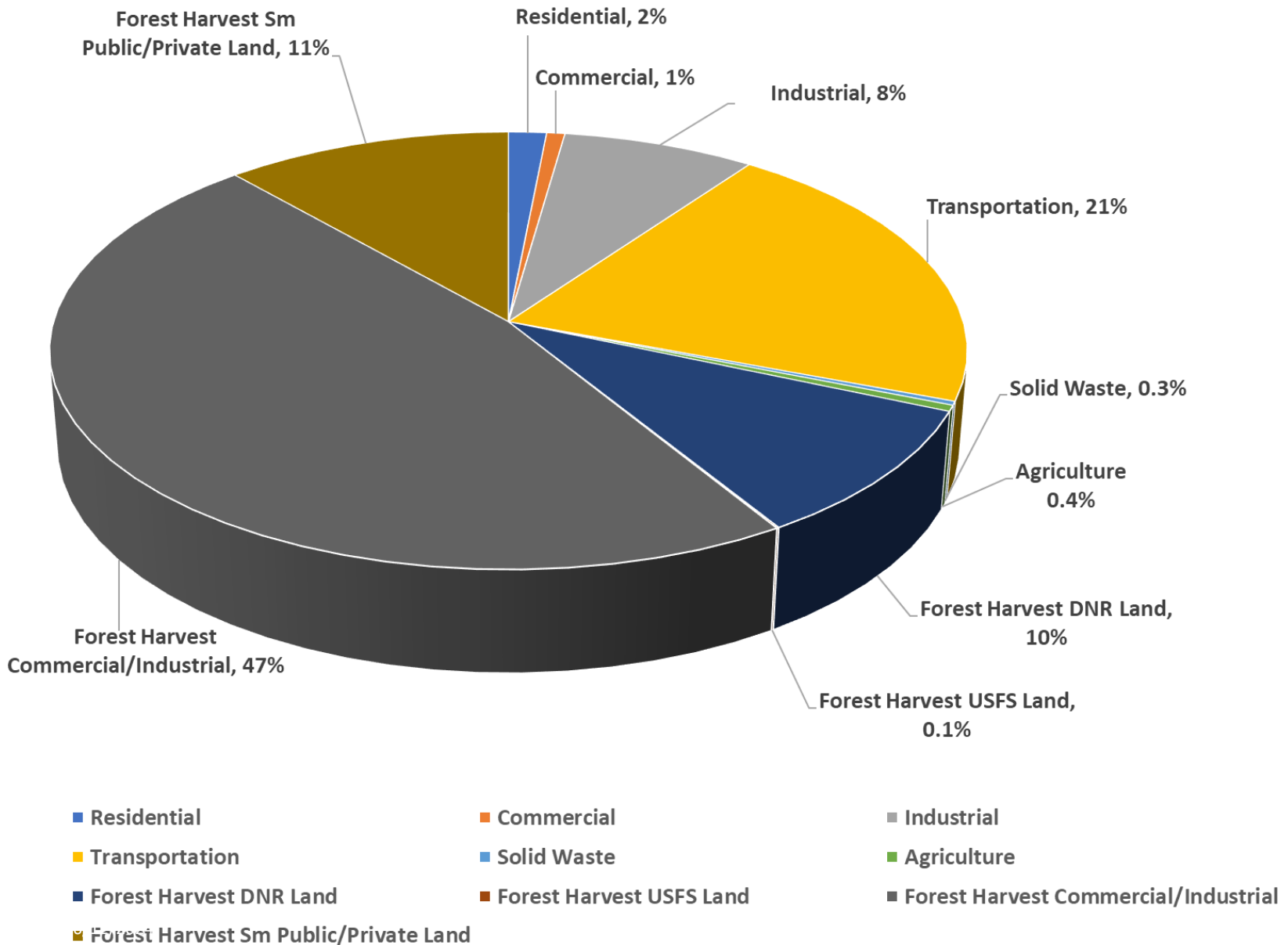
# Backup

---

# New Emissions Goal Summary

<b>Year</b>	<b>GHG</b>	<b>% reduction</b>	<b>Percent</b>
	<b>Emissions (Metric tons)</b>	<b>from 2018</b>	<b>reduction from 1990 level</b>
<b>1990</b>	<b>441,560 est.</b>	<b>N/A</b>	<b>N/A</b>
<b>2018 GHG Emissions</b>	<b>275,083</b>	<b>N/A</b>	<b>38%</b>
<b>2030 Emissions Goal</b>	<b>113,609</b>	<b>58.7%</b>	<b>74%</b>
<b>2050 Emissions Goal</b>	<b>13,754</b>	<b>95%</b>	<b>97%</b>

# Jefferson County Human Caused CO<sub>2</sub> Emissions Sector-based and Forest Harvest (2018, 2011-2016)



# Proposed Sequestration Goal

---

**Proposed New Carbon Sequestration Goals for Jefferson County, excluding the Olympic National Park and Wilderness areas (ONPW)**

**By 2030: a 20% increase above the 2011-2016 baseline of 1.6 Million Metric Tons of CO<sub>2</sub> (MMTCO<sub>2</sub>)/year, up to 2.0 MMTCO<sub>2</sub>**

**By 2050: an additional 20% increase to 2.3 MMTCO<sub>2</sub>/year, for a total of 40% increase above 2011-2016 baseline**

## Climate Action Committee Organizational Goals for 2022 - 2023 (04/23/24 version)

The CAC has recommended that each organization represented have one goal related to reducing greenhouse gas emissions (mitigation) and one related to preparing for climate impacts (adaptation) for the two years of 2022 and 2023.

### 1. City of Port Townsend:

#### a. Mitigation:

- Increase walkability and bike-ability throughout PT.
  1. By: Assuring that new road construction will use the tenets of the Complete Streets Program and any major street renewal will if possible make non-motorized travel a priority.
  2. By: Working to connect walking and bike paths thereby creating a continuous route from one side of PT to the other. Example: paving the trail between Cedar and Center streets to complete the loop trail route to Fort Worden from Uptown.
- **Status:**
  1. Council adopted Ord. 3306 Increasing residential building capacity - The zoning changes (e.g., reduced parking requirements, Tiny House on Wheels, allowing 2 ADUs to a single-family residence, removing barriers to townhouses) help unlock and inspire affordable, dense, quality infill development within the urban growth area.
  2. Comprehensive Streets Program including Citywide sidewalk/ADA construction, upgrades, and repairs estimated at \$100,000 per year and Citywide traffic calming estimated at \$30,000 per year.
  3. The city secured a number of grants for sidewalks (Tyler Street, Washington Street to County Courthouse, Discovery Road, intersection of 19<sup>th</sup> and Sheridan).
  4. Banked capacity was used to develop sidewalk on 9<sup>th</sup> Street.
  5. Contractors are completing Discovery Road improvements which include new pedestrian and bike facilities connecting to Sheridan and Rainier Street.
  6. Edge Lane Roads have been implemented on 9<sup>th</sup>, 49<sup>th</sup>, Blaine, Fir, Hancock, and Kuhn Street.
  7. The city is developing a traffic calming program and transportation benefit district.
  8. Promoted travel-free business practices:
    - a. on-line permitting portal for building permits
    - b. virtual meetings with clients and partners and for conducting city business
    - c. digital council packets and online comment forms
    - d. telecommute policy
    - e. ZEV carshare
  - 9.
- By: Exploring Open Streets, Parklets, and Traffic Calming. Continue to employ the most efficient use of the city's fleet of vehicles
  1. Explore possible future hybrid and/or electric vehicle use. Encourage placement of charging stations.

#### Status:

- Parklets were explored and Streeteries implemented during the City's Covid response. While a permanent Streeteries program was developed, no applications were received.
- The Police Department purchased two hybrid vehicles and two e-bikes in 2022.
- Public Works purchased a hybrid pickup truck and budgeted for an e-bike.
- Public Works explored a grant for an EV street sweeper but found it was not affordable and the product had poor reviews.
- City, CAC, Chamber and OlyCap partnered with ZEV Co-op to offer cooperative EV carshare. Currently two EV cars are available.
- 2.

- Continue to explore traffic and parking plans  
**Status:** Amended the Parking Code (PTMC 17.72) to reduce parking requirements

b. Adaptation:

- Use the Climate Risk Screening Tool where appropriate during planning and decision-making.

Status: Although the Climate Risk Screening Tool has not yet been implemented, the city has:

- Completed The City of PT Sea Level Rise and Coastal Flooding Risk Assessment (Oct. 2022) with funding from NODC
- Included SLR in the draft General Sewer Plan update
- Implementation of the water agreement with the Port Townsend Paper Mill (meter install for monitoring water use in real time and in aggregate)
- Received Ecology Shorelands Competitive Grant to complete the City Shoreline Master Program periodic update and incorporate SLR
- Supported Port of PT in their application for BRIC funding to determine feasibility of integrated Waterwalk and sea-level rise structure from the bluff at west end of the Boat Haven to the bluff near the intersection of Water Street and East Sims Way

2. **Jefferson County:**

a. BOCC:

- Develop a Commute Trip Reduction Program
  1. Support telecommuting where appropriate, covered bike racks
- Promote travel-free business practices
  1. Onlines services such as permit applications with Energov
  2. Virtual meetings with clients and partners and for conducting county business
- Manage County-owned land for multiple benefits, including carbon sequestration, storage and forest health via the Community Forestry Program

b. Fleet:

- Switch to renewable (bio) diesel fuel when available
- Replace 2 medium duty trucks with dual fuel vehicles (propane)
- Hoh Shop - replace oil heat and gas generator with propane powered equipment
- Purchase electric vehicles for Public Works, Community Development, and Public Health
- Install solar panels and solar light tubes on a new Hadlock shop roof

c. Facilities:

- Continued interior LED light retrofits (outside lighting already LED)
- Institute County-wide recycling program
- Smart thermostats for PH, PW, DCD
- Replace employee owned space heaters with more efficient/safe panel heaters
- Brinnon Community Center remodel to usie green techniques and solar panels
- Port Townsend Community Center Gym to be rebuilt with better insulation, windows and heating system
- Install bike racks at county buildings

d. Purchasing:

- Mandate the use of recycled paper
- Promote the use of reusable/compostable cutlery, cups and plates - eliminate plastics
- Require purchases to be evaluated through the Climate Change lens: discourage single-use materials, require products made with recyclable/reusable/compostable materials

e. Public Health:

- Reduction in plastic incentive items given to families receiving services in the Community Health Division (example: toys/supplies for WIC, NFP, WIC families)

- Prioritize and set goals for developing mitigation plans for climate impacts on human health, including food security, disease prevention, severe weather, air quality,
- Research and mitigate impacts of pathogens in our warming water bodies: shoreline, lake, river, stream and ground waters.
- Support food-producing businesses to replace single-use plastic and non-compostable to-go containers with reusable, durable, or fully compostable items
- Connect food producing businesses with those that serve the food insecure to divert edible food from landfill
- Change the type of recycling collected to reflect commodities with a lower carbon footprint (eliminate plastics #3-7, clam shells, etc.)
- Continue providing home composting classes to 100 new households, adding another 40 tons of food waste diverted from landfill

f. Public Works:

- Establish more resilient infrastructure to handle increased stream/river flows by replacing and upsizing culverts and bridges, fish barrier correction work and with Federal Highways on the county roads serving Olympic National Park.
- Road protection on the Upper Hoh Rd in collaboration with Federal Highways to withstand increased flood flows.
- Continue to create more non-motorized facilities including extension of Olympic Discovery Trail, Lopeman Trail, Tollefson Trail.
- Target and reduce snow and ice applications (and allow for use of smaller vehicles) to reduce diesel
- Continue Solid Waste education efforts aimed at waste reduction. Continue to promote backyard and school composting to remove food waste from the waste stream and eliminate the carbon footprint associated with transporting.

g. Community Development:

- Prepare a comprehensive flood hazard management plan for Big and Little Quilcene Rivers & a relocation study for floodprone households abutting the Dosewallips and Duckabush Rivers - Ecology grant #1.
- Conduct a Sea Level Rise Study to guide planning and development activities in response to anticipated sea level changes - Ecology grant #2
- Create a shoreline users guide to explain provisions governing shoreline development - Ecology grant #3
- Review existing implementation of Chapter 15.15 - Flood Damage Prevention to ensure compliance and reduce loss of life and damage to property during flood events
- Implement Climate Action goal of incorporating teleconferencing, telecommuting and alternative work schedules where practicable

h. Emergency Management

- Update Hazard Mitigation Plan in 2022 with required Climate Change section (and intersections of climate impacts associated with other risks)
- Complete Community Wildfire Protection Plan

3. Jefferson Transit: in the process of completing their long-range plan, and goals will be added when that is complete.

4. Jefferson Healthcare:

- a. Mitigation: We have joined Energy Star as well as ASHE's Energy to Care portfolio. With the adoption of HB 1257 and the Clean Buildings Act, that was signed into law by Governor Inslee. We need to hit a EUI (energy use intensity) number of 215 by June of 2026.

Jefferson Healthcare contracted Sazan Engineering to do an Energy audit and we came in at an EUI of 189, which is well below the target number. We currently hold a 91 rating with Energy Star

- b. Why have we done so well:



- We have completed 90% of LED interior fixture upgrades to Jefferson Healthcare’s lighting and should be completed by 2022
  - We have just started replacing sodium parking lot lights with LED fixtures reducing our energy cost by 72% by using LEDs compared to the sodium lights.
- c. Goals moving forward:
- We will continue to swap out LEDs lighting fixtures throughout the year in all of our facilities
  - Jefferson Healthcare has agreed to purchase new equipment with only the “Energy Star” certification starting September 2021.
- d. Adaptation: TBD
5. Local 20/20:
- a. Mitigation:
- Inform community on global and local climate issues so that county residents know how to act both individually and collectively toward a sustainable future. Will hold at least 4 a year Climate on Tap presentations in collaboration with Finnriver and Jefferson County Public Health.
    1. Held 3 climate on taps in 2022. Wrote Local 20/20 PT Leader columns on Saving the Planet with Your Fork and The Inflation Reduction Act Can Save You Money. Tabled with climate information at All County Picnic and other events.
  - Participate in the NODC Climate grant as member of steering committee, and look for ways to leverage it to research opportunities to reduce community-wide emissions.
  - Cindy Jayne participated in the steering committee. Cindy Jayne and David Wilkinson participated in the steering committee for the City of Port Townsend Sea Level Rise study, which was funded from that grant. Advocate for strategies and projects to reduce community wide emissions
    1. Co-organized Car Free Day, paid parking proposal that CAC approved was in collaboration with Local 20/20 TLAB.
  - Participate in the CAC Electric Vehicle working group
    1. In process, 3 Local 20/20 members are part of that group, and participated in the 2022 EV Expo. Updated Jefferson CAN EV webpages, generated handouts for tabling. Wrote Local 20/20 PT Leader column on EV Expo.
  - Participate in the Vehicle Miles Reduction working group
    1. 1 Local 20/20 TLAB representative and 1 Local 20/20 Climate group member are part of the group.
- b. Adaptation:
- Document selected King Tide events (3-5).
    1. Documented 4 King Tides in 2022, and 3 in 2023. Supported an intern. Supported City of PT SLR study with data and photos from king tide monitoring.
  - Provide climate input on municipal documents, including the Hazard Mitigation Plan.
    1. Provided input on Hazard Mitigation Plan, and participated in NODC Climate Disaster planning grant.
6. **Jefferson PUD** (the following are from the PUD GHG Reduction Policy resolution passed in 2010, prior to being an electrical utility):
- a. Mitigation:
- PUD buildings should emphasize cost effective, energy- efficient construction and operation; encourage energy conservation practices in buildings by raising the awareness of employee’s own energy use; conduct energy audits of PUD buildings, evaluate potential conservation measures, and then carry out those measures that are appropriate; and promote weatherization programs for existing buildings.
  - Employee transportation: Encourage ride-sharing, Van-pooling, bicycling, and the use of flex-time schedules by employees

- Fleet vehicles: Implement an energy-sensitive fleet management program, to include the use of alternate energy sources such as electricity, diesel or bottled gas, fuel-efficient Vehicles, frequent tuning and maintenance of vehicles, and the use of re-refined motor oil in fleet vehicles;
- Monitor the efficiency of the pumps in water and sewer systems, and operate and maintain them at peak efficiency.
- Implement a solid waste strategy which: Reduces the solid waste stream by recycling and other means; Investigates ways to convert non-recyclable solid waste to energy; and promotes the purchase of recycled and recyclable goods.
- Public Education and Outreach: Encourage PUD customers to conserve power resources and to minimize the generation of Green House Gas. Explore and implement alternatives for the conserving and generating energy through renewal sources should the PUD become an electrical utility.

b. Adaptation:

- Encourage PUD customers to conserve water