

# PORT OF PORT TOWNSEND HERB BECK MARINA BOAT LAUNCH REPLACEMENT PROJECT 22-2095 DEV

Development | Boating Facilities Program | Community Meeting  
October 13, 2022





# SUMMARY: HERB BECK MARINA BOAT LAUNCH DEVELOPMENT PROJECT



## Scope

- ADA-Compliant Boat Launch Ramp, Access Ramp, & Boarding Float
- ADA-Compliant Restroom Renovations
- ADA-Compliant Parking Lot Improvements

## Funding

- \$1,500,000 Total Project
- \$ 500,000 Port Match Ready

## Need

- Ramp Degraded & Potentially Unsafe

## Schedule

- Permitting: 2023-2024
- Construction: 2024-2025

# PROJECT LOCATION

## Herb Beck Marina, Quilcene

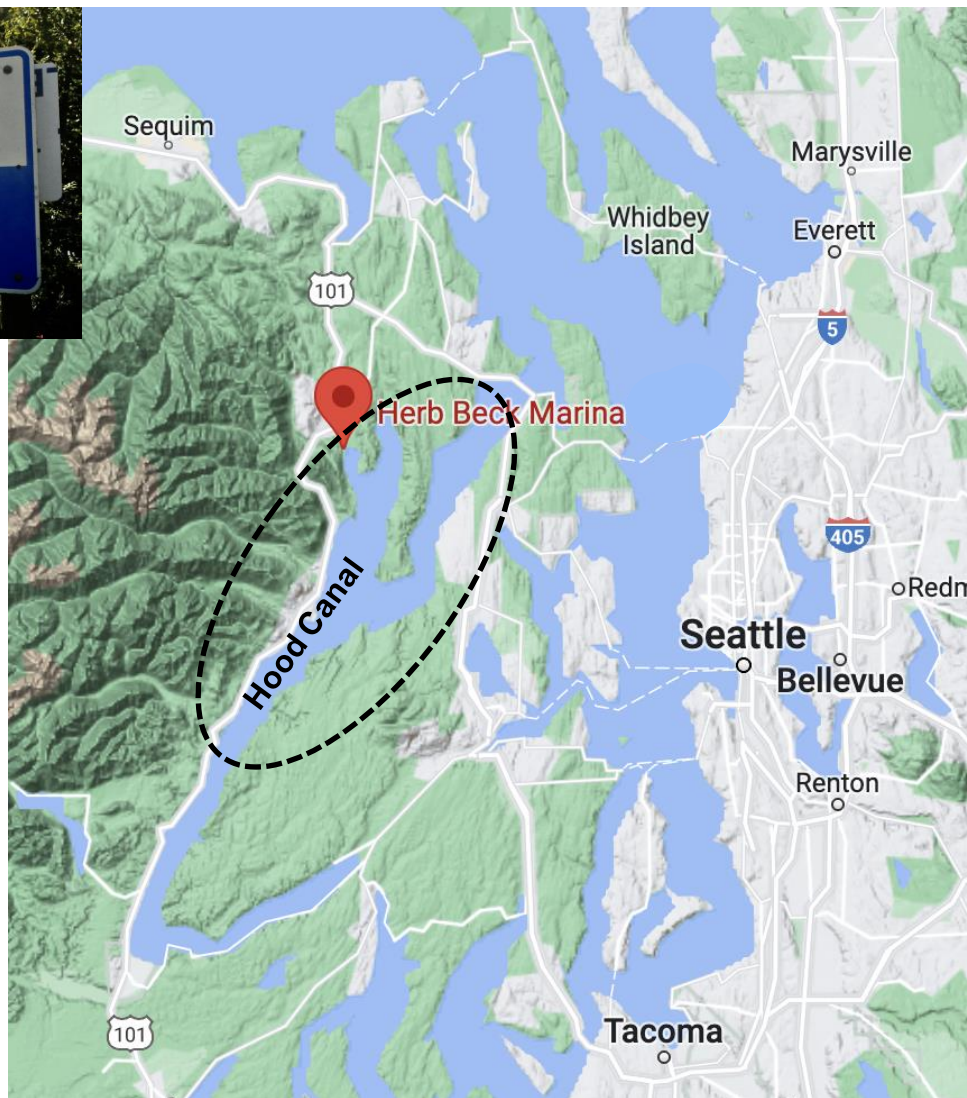






# PROJECT LOCATION

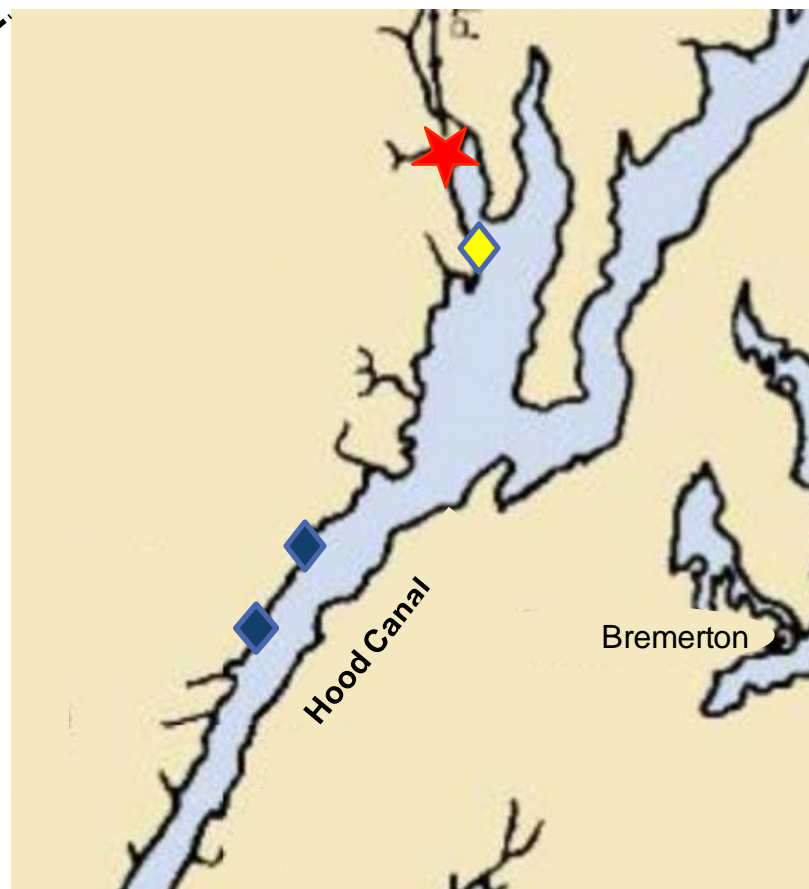
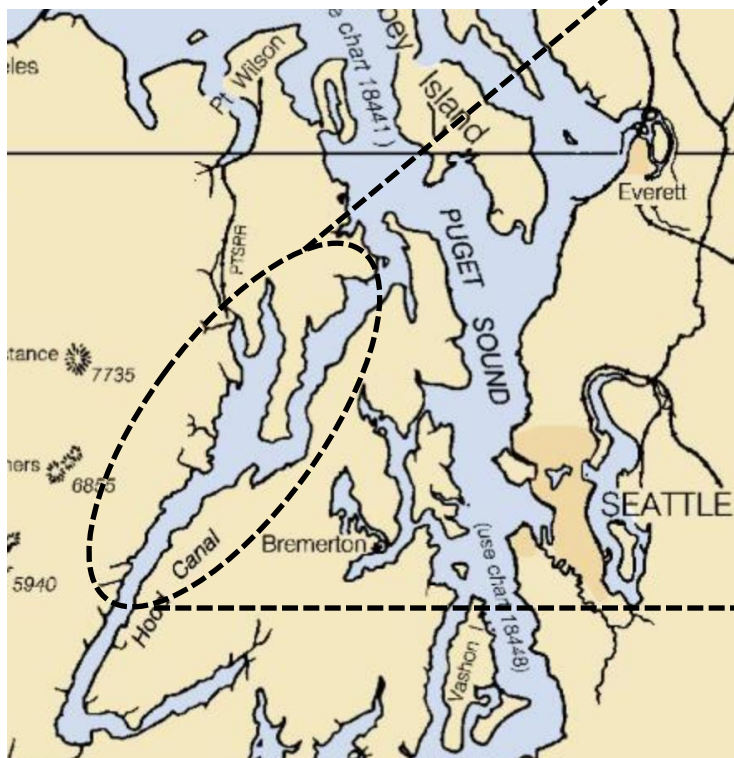
## Herb Beck Marina, Quilcene



## QUESTION 1: NEED Maintain & Enhance Public Boating Access to Hood Canal

Closest ADA-compliant boat launch

- Pleasant Harbor (16 miles south)





## QUESTION 1: NEED

### Physical Condition – Deteriorating & Difficult to Use



*“[It’s] a convenient location, however the deteriorating condition and dangerous ramp were factors in selling our boat.”*

*-Quilcene Community Member*

*“Great location for a nice protected slip. Small .... steep ramp .... tight for larger boats.”*

*“Some hazards so be aware.”*

*-Roving Fox RV Adventures*

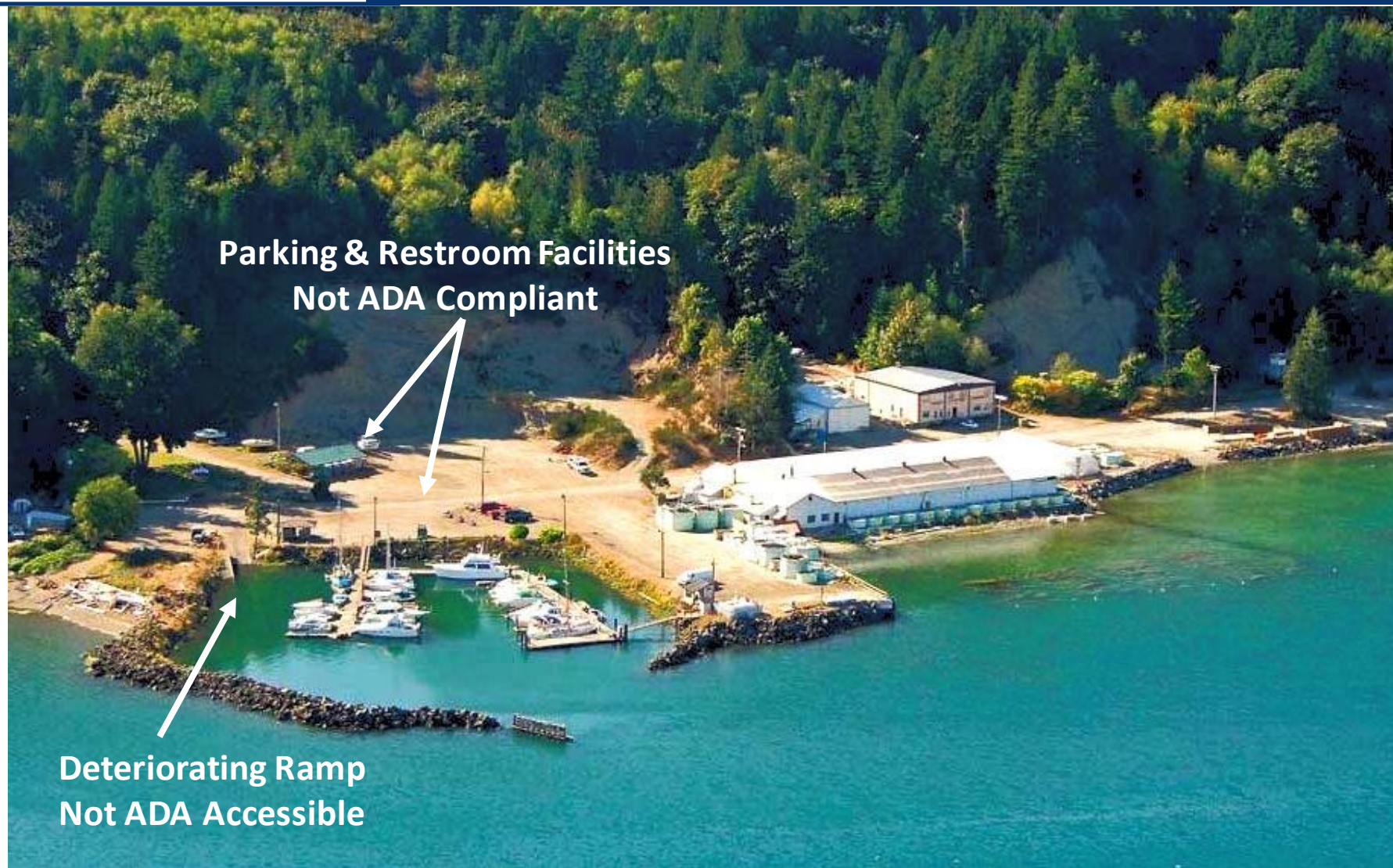
## QUESTION 1: NEED

### Aging, Non-ADA Compliant Restroom Facilities





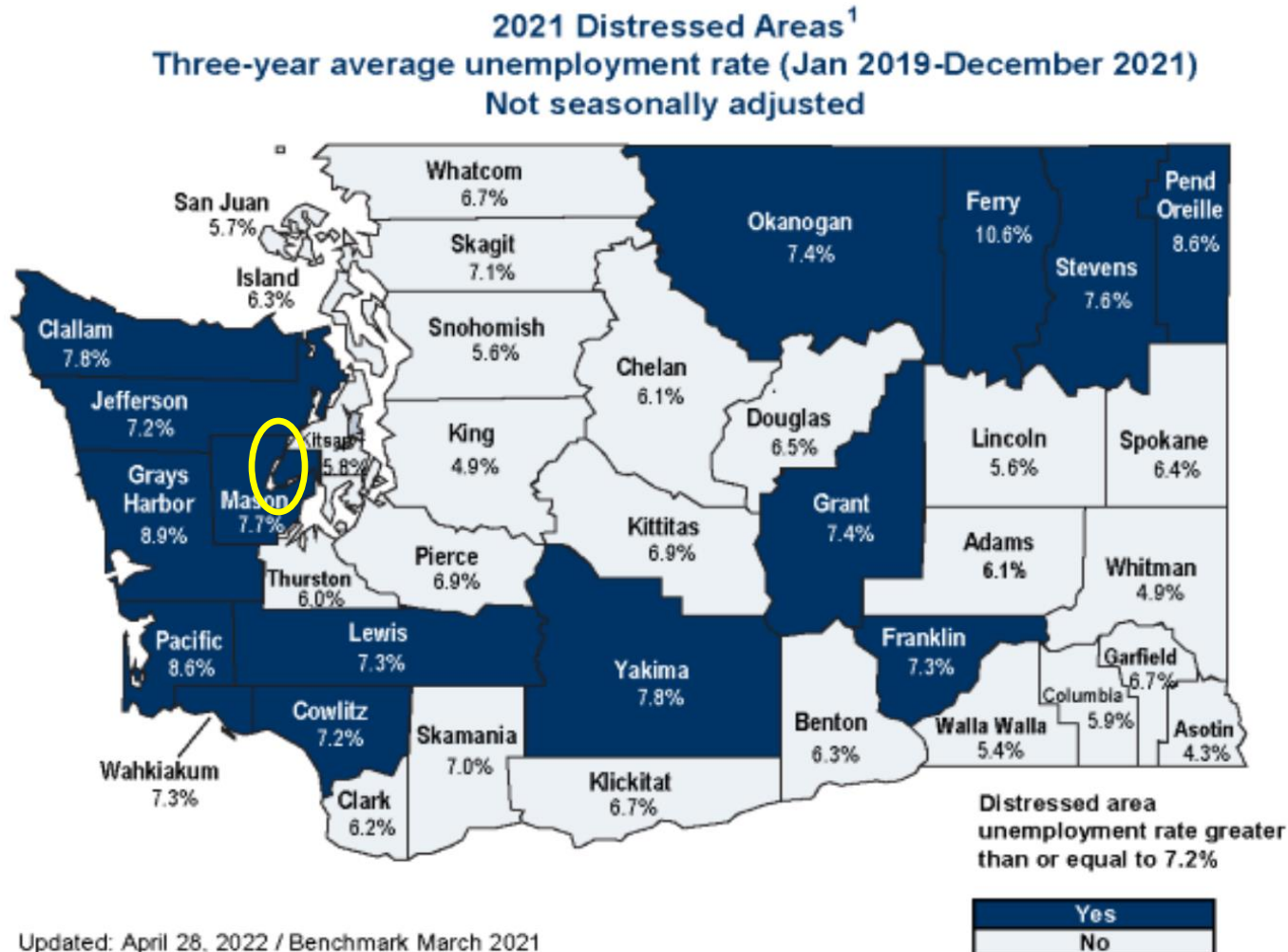
## QUESTION 1: NEED Physical Accessibility - Not ADA Compliant





## QUESTION 1: NEED

### Rural Distressed Area – Jefferson, Clallam, Mason Counties



Updated: April 28, 2022 / Benchmark March 2021

<sup>1</sup>Prepared in cooperation with the Bureau of Labor Statistics.

Rates are used to determine distressed areas.

## **QUESTION 1: NEED**

### **Comprehensive Planning Priority**

# **PORT OF PORT TOWNSEND**

## **COMPREHENSIVE SCHEME OF HARBOR IMPROVEMENTS (CSHI)**





## PENINSULA Daily News



The Port of Port Townsend's Herb Beck Marina in Quilcene was the subject of an outreach survey conducted this past summer. (Diane Urbani de la Paz/Peninsula Daily News)

## Quilcene wants more of Herb Beck Marina

Changes needed, residents tell Port of Port Townsend

By Diane Urbani de la Paz

Monday, October 18, 2021 1:30am | [NEWS](#) | [JEFFERSON COUNTY](#) | [PORTS](#)



Quilcene Harbor Yacht Club



## QUESTION 1: NEED

### 2021 Community Outreach – “We’re Listening, Quilcene”

*“This is an essential part of the quality of life for locals and the value of the recreational experience for visitors. It’s an asset of immeasurable value and is an element of local traditions and life in the Hood Canal area.”*

*“Linger Longer has been a public treasure for many more years than I have been around. I grew up utilizing the facilities since the 1960s and I want my grandkids and their kids to have that same opportunity.”*



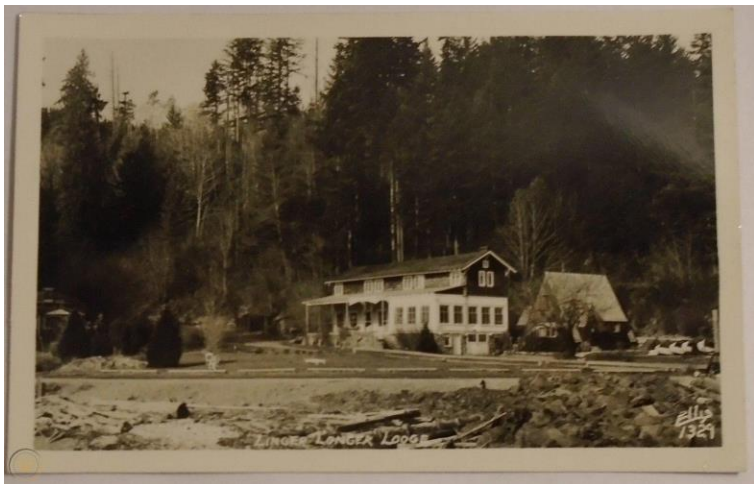
*“My name is Ewan Lorrest, and I’m a Junior here at Quilcene High School. I think the biggest thing we can see improvement on in the marina area is just general maintenance and accessibility to the public, with parking areas, and general boat access, and all sorts of things like that.”*

*“This land and its access to maritime activities is essential to the community and its environmental health.”*



## QUESTION 2: SITE SUITABILITY

### Protected Bay Long Dedicated to Recreational Boating



**1927:** Warranty Deed V 95 of Deeds P 220

**1960:** Statutory Warranty Deed AFN 166302

**1971:** Statutory Warranty Deed AFN 211245\*

**1976:** Statutory Warranty Deed AFN 216631 & 232660

95-220 and 221 DEEDS 57498 Filed February 1st, 1928. D39

W. B. Satterlee and Jessie E. Satterlee, husband and wife, the parties of the first part,

The Port of Port Townsend, the party of the second part.

WARRANTY DEED. Dated March 30th, 1927. Cons. \$1300.00.

WITNESSETH: That the said parties of the first part, \* \* \* do by these presents Grant, Bargain, Sell, Convey and Confirm unto the said party of the second part and to its heirs and assigns, the following described tract or parcel of land, situated, lying and being in the County of Jefferson, State of Washington, and particularly bounded and described as follows, to-wit:

All of the tideland and upland at Quilcene, Jefferson County, Washington, lying east of the Port Townsend Southern Railroad (now property of the Chas. R. McCormick Lumber Co.) right of way and extending out to the outer tide land line between a point 100 feet north of a stone monument at the northwest corner of Hastings's wharf and running north along said easterly line of said railroad right of way 100 feet and including the wharf on said premises; and also all the tidelands of the second class, formerly belonging to the State of Washington, lying between the line of mean low tide and

## QUESTION 2: SITE SUITABILITY

### Access to Year-Round Productive Fishing Locations

#### WDFW Area 12:

- Shrimping
- Coastal Cutthroat Trout
- Seasonal Salmon
- Shellfish Beaches
- Wildlife Viewing



<https://northwestfishingreports.com/>

<https://www.powflyfishing.com/blog/hood-canal-sea-run-cutthroat-trout>

<https://kayakbrinnon.com/blog/2018/05/09/hood-canal-wildlife/>



## QUESTION 3: URGENCY

Launch Exceeded Design Life—Not Meeting Boating Needs



## QUESTION 4: PROJECT DESIGN

### Preliminary Design Initiated

[RESERVED]

#### Project is in a Preliminary Stage

✓ 10% Design Complete

#### Estimated Timeline

- **Permitting:** 2023-2024
- **Construction:** 2024-2025  
in-water work window
- Construction to be completed in  
**one** construction season



## QUESTION 4: PROJECT DESIGN

### Replaces and Improves Existing Facility

**Will be designed and engineered to meet trailer-boater needs for the coming decades:**

- ✓ Replaces and improves existing facility
- ✓ Environmentally sound design
- ✓ Durable low-maintenance construction maximizes anticipated useful life
- ✓ Upgrades parking and restroom facilities for ramp and moorage users



## QUESTION 4: PROJECT DESIGN

### ADA-Compliant Ramp and Seasonal Handling Float



[RESERVED]

#### EXISTING

- ✗ NOT ADA-COMPLIANT
- ✗ NARROW & STEEP
- ✗ PAST DESIGN LIFE
- ✗ DETERIORATING
- ✗ SOON UNSAFE

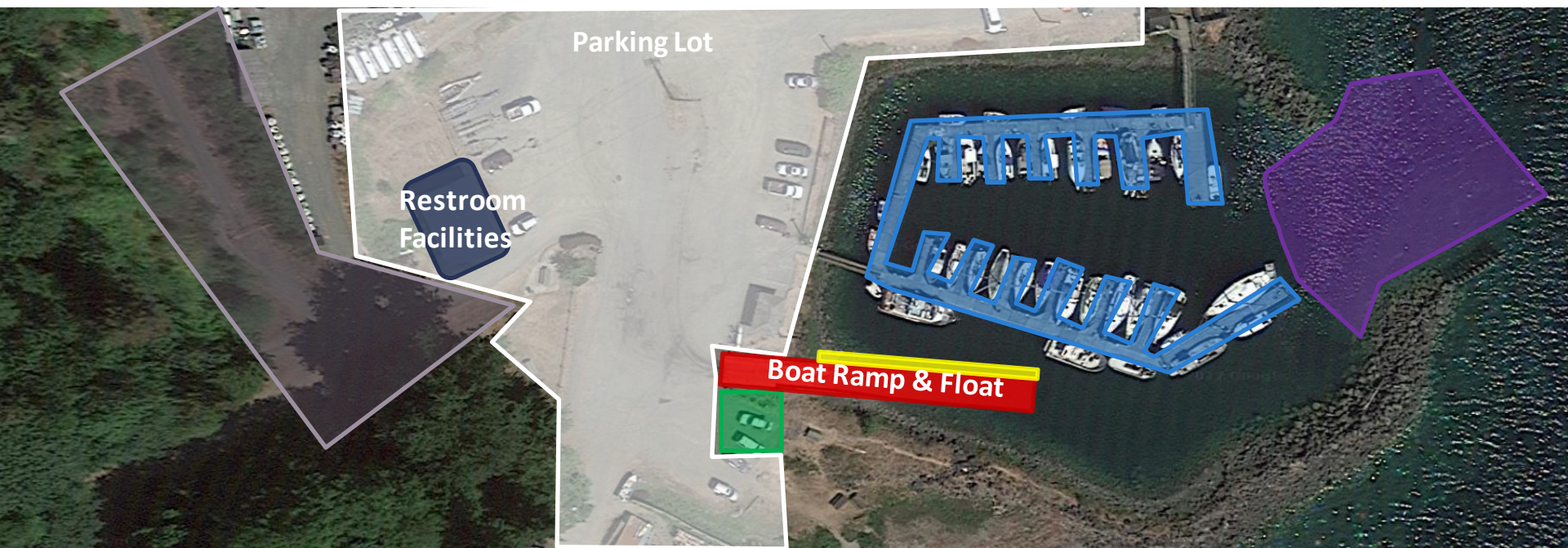
#### PROPOSED

- ✓ ADA-COMPLIANT ONE-LANE RAMP
- ✓ ADA-COMPLIANT GANGWAY & HANDLING FLOAT
- ✓ ADA-COMPLIANT PARKING & RESTROOM FACILITIES
- ✓ IMPROVED LAUNCHING & RETRIEVAL OPERATIONS



## QUESTION 4: PROJECT DESIGN

### Larger Scope – Overall Facility Renovation & Improvement



## PROPOSED NON-GRANT ACTIVITIES

- ✓ **MARINA DREDGE**
- ✓ **DOCK RESTORATION**
- ✓ **PORTLAND LOO & OUTDOOR SHOWER**

- ✓ **LANDSCAPE IMPROVEMENTS**
- ✓ **RV CAMPGROUND DEVELOPMENT**

## QUESTION 6: SUSTAINABILITY

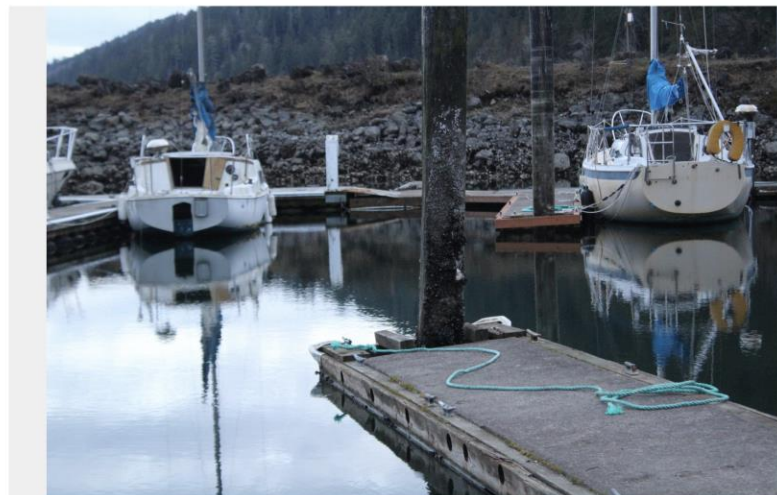
### Ecological Benefits



- ✓ **LAND-BASED EQUIPMENT OPERATING ON EXISTING RAMP FOR REMOVAL**
- ✓ **BOOM TO CONTAIN DEMOLITION/CONSTRUCTION DEBRIS**
- ✓ **PRECAST CONCRETE RAMP IN LOCATION OF CURRENT RAMP (SLIGHTLY WIDER)**
- ✓ **GRATING ON HANDLING FLOAT TO REDUCE SHADE IMPACTS ON NEARSHORE HABITAT**
- ✓ **HABITAT MITIGATION PLAN TO BE DEVELOPED**

### *The Leader*

**Port earns kudos for pollution prevention at Herb Beck Marina**



The port recently received recognition for its efforts to keep the Herb Beck Marina in Quilcene clean.

LEADER PHOTO BY LILY HAIGHT

Posted Wednesday, June 23, 2021 8:26 am



## QUESTION 6: SUSTAINABILITY

### Social and Economic Benefits



### *The Leader* Community spirit in Quilcene



Family, friends, neighbors and visitors gather for the Quilcene Community Portrait on Sept. 17 on U.S. Highway 101, as part of the 33rd Quilcene Fair Parade. Photos by Vivian Kuehl

- ✓ **ENHANCES RECREATIONAL BOATING ACCESS IN AN ECONOMICALLY DISTRESSED AREA**
- ✓ **PROMOTES OPPORTUNITIES FOR PHYSICAL ACTIVITY, SOCIAL/CULTURAL CONNECTIONS AND EDUCATION**
- ✓ **DESIGN AND MATERIALS MAXIMIZE LIFESPAN AND REDUCES MAINTENANCE COSTS**
- ✓ **PROMOTES ECONOMIC ACTIVITY AND TOURISM**

## QUESTION 7: COST-BENEFIT

### COST

### BENEFIT

Increased Risk Due to Non-ADA Access & Deteriorating Ramp	<b>SAFETY</b>	Safe Public ADA-Compliant Access
Reduced Public Access	<b>ACCESS</b>	Maintains & Improves Public Access to Hood Canal
Ramp Deteriorating	<b>ENVIRONMENT</b>	Largely Within Existing Footprint Grated Float
Avoided by Community Due to Deteriorating Condition	<b>ECONOMICS</b> <small>*Rural Distressed Area</small>	Increased Facility Usage: Tourism, Property Value, Tax Revenue

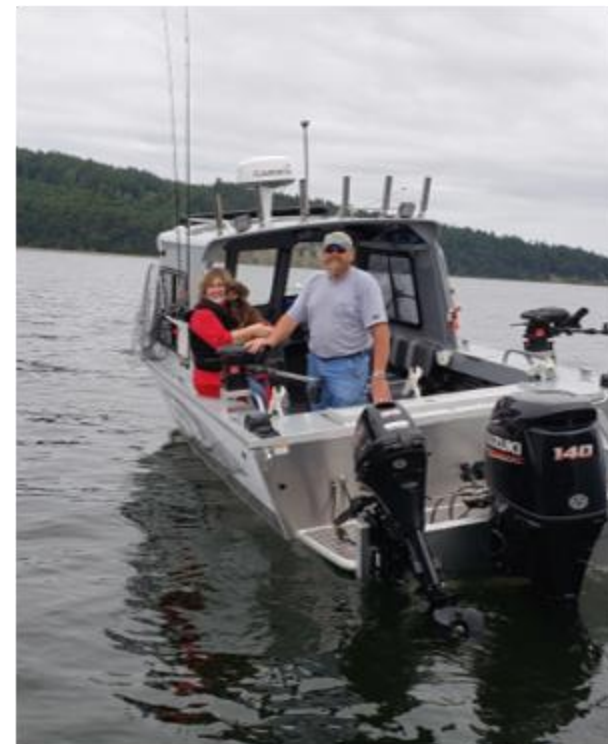


[RESERVED]



## QUESTION 8: BOATS ON TRAILERS

### New Facility Will Serve Trailer Boaters Throughout Region



## QUESTION 9: BOATING EXPERIENCE

### A Successful Shrimp Opener on Hood Canal



**The Leader**

**Hood Canal shrimping to  
continue May 9, 11, 13**



## QUESTION 9: BOATING EXPERIENCE

### Quilcene – *The Pearl of the Peninsula*

#### The Herb Beck Marina Boat Launch Replacement Project:

- ✓ Adds wider ramp & handling float improving water access and vessel launch/retrieval
- ✓ Maintains and improves public recreational boating access to one of Washington hidden gems – Quilcene & Dabob Bay
- ✓ Provides ADA accessibility (handling float, parking, & restrooms) for the first time at the only public access point on Quilcene Bay



<https://northwestfishingreports.com/>

## QUESTION 10: READINESS

- ✓ **Design:** Preliminary (Conceptual) Drawings Complete
- ✓ **Matching Funds:** Port Match Confirmed

### Anticipated Schedule

<b>Design and Engineering:</b>	2023 (completed)
<b>Permitting:</b>	2023-2024
<b>Construction Bids:</b>	Spring/Summer 2024 (contingent on permit issuance)
<b>Construction:</b>	2024-2025



**THANK YOU** for helping us preserve and enhance public access to the waters of Hood Canal!



**ERON BERG**

Port of Port Townsend  
Executive Director  
(360) 385-0656  
eron@portofpt.com

**ERIC TOEWS**

Port of Port Townsend  
Deputy Director  
(360) 385-0680  
eric@portofpt.com