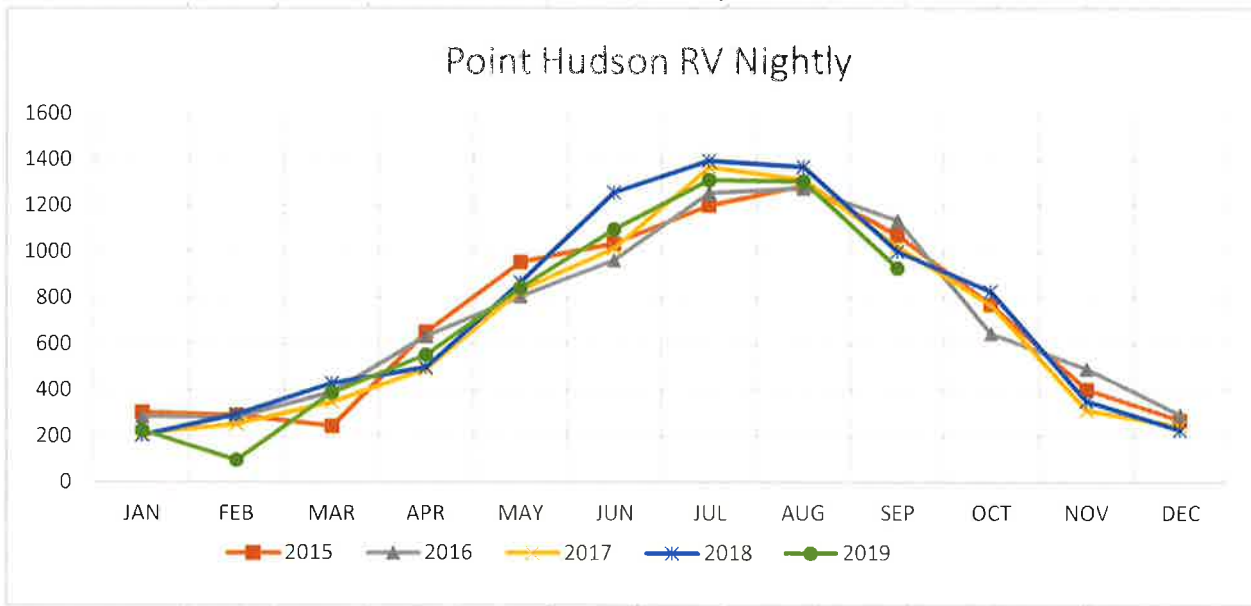


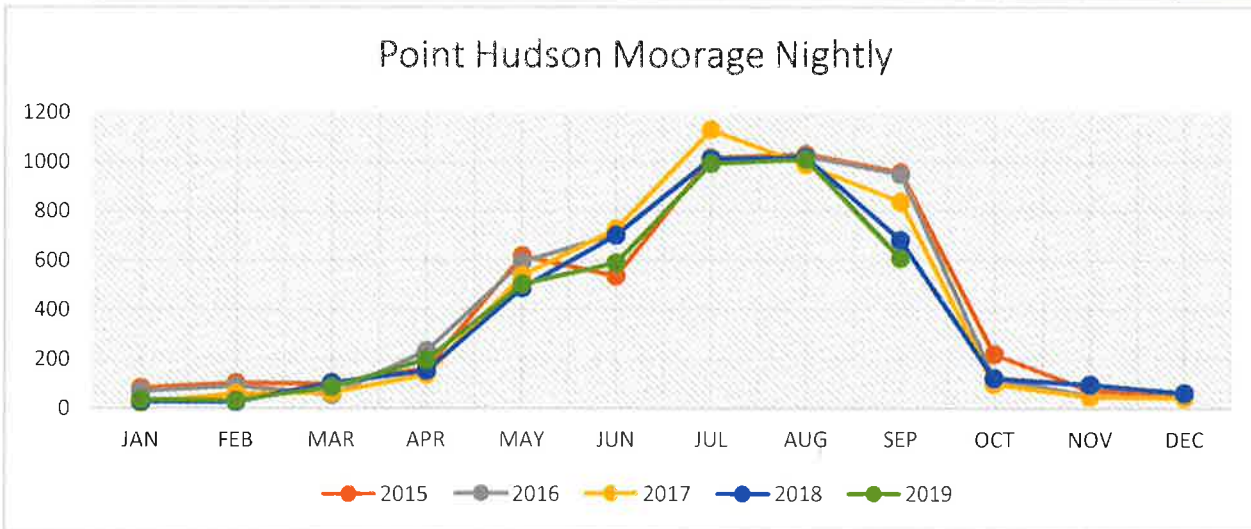
Port of Port Townsend

Five Year Comparisons



POINT HUDSON RV PARK - Nightly Count

	JAN	FEB	MAR	APR	MAY	JUN	JUL	AUG	SEP	OCT	NOV	DEC	TOT
2015	304	291	244	652	955	1036	1202	1287	1072	771	403	269	8486
2016	286	281	392	634	806	963	1256	1276	1137	645	492	293	8461
2017	211	253	349	491	833	1015	1368	1314	1022	770	312	243	8181
2018	204	294	430	498	868	1258	1396	1369	1001	828	352	226	8724
2019	225	96	389	552	843	1098	1312	1307	928				6750

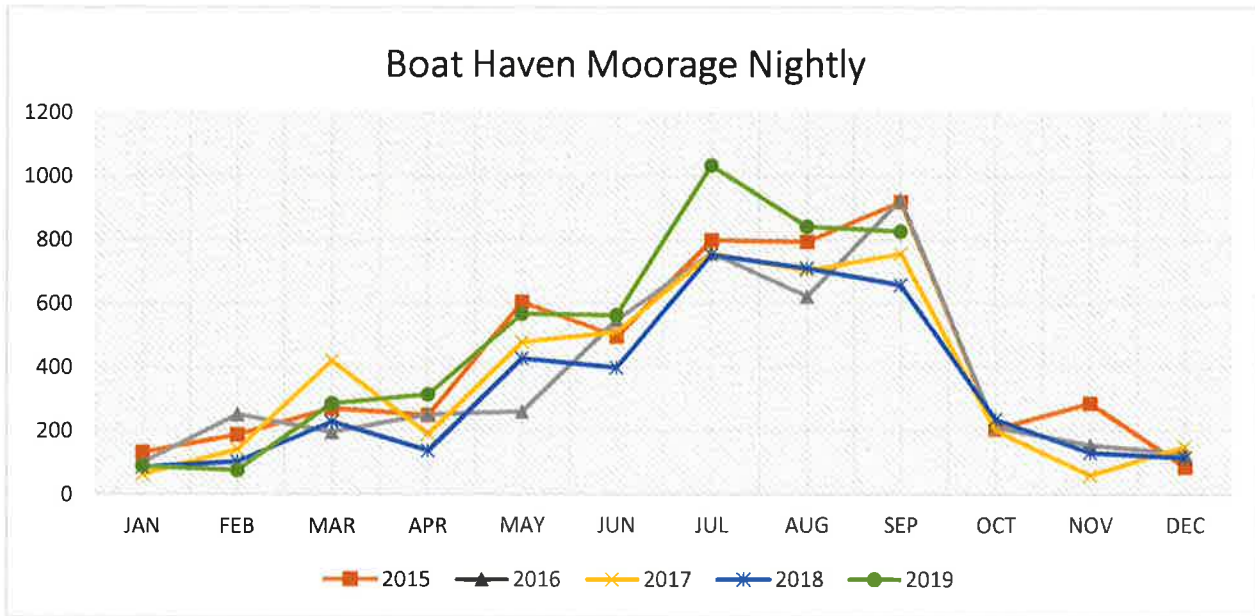


POINT HUDSON MARINA - Nightly Count

	JAN	FEB	MAR	APR	MAY	JUN	JUL	AUG	SEP	OCT	NOV	DEC	TOT
2015	83	104	101	163	619	537	1018	1033	958	221	73	60	4970
2016	70	92	56	235	594	706	1015	1026	950	122	51	44	4961
2017	25	60	65	138	540	729	1131	990	839	99	48	45	4709
2018	27	28	104	154	489	703	1013	1019	683	123	96	62	4501
2019	37	33	88	198	504	590	995	1011	609				4065

Port of Port Townsend

Five Year Comparisons



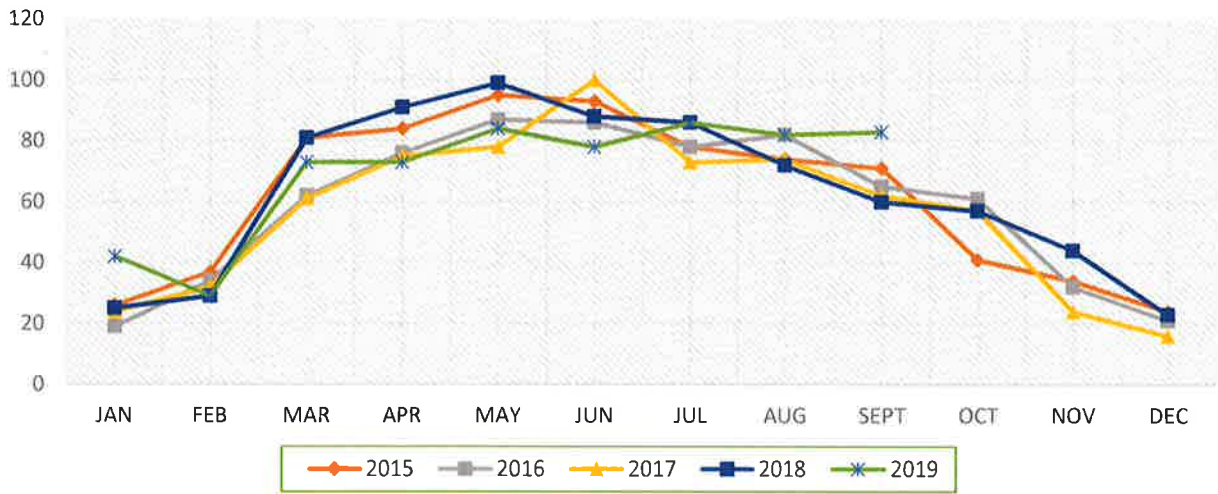
BOAT HAVEN MARINA - Nightly Count

	JAN	FEB	MAR	APR	MAY	JUN	JUL	AUG	SEP	OCT	NOV	DEC	TOT
2015	132	188	271	249	605	497	799	795	920	206	287	87	5036
2016	100	251	196	251	261	548	759	623	927	211	156	129	4412
2017	64	141	420	190	479	511	757	704	757	202	61	150	4436
2018	86	103	228	137	427	399	753	711	658	236	131	116	3985
2019	89	76	286	314	567	563	1034	842	827				4598

Port of Port Townsend

Five Year Comparisons

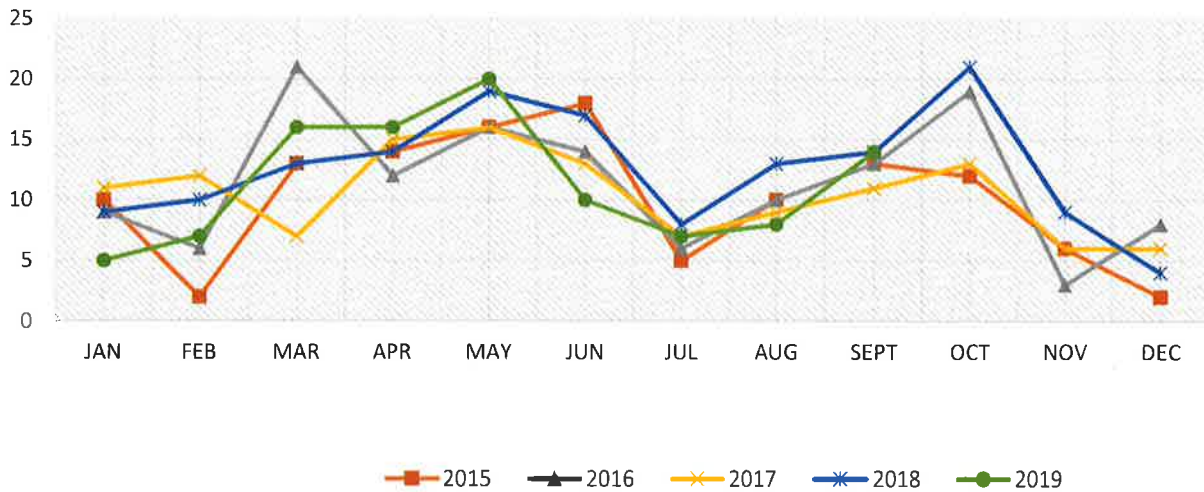
Workyard 75T Haul Outs



WORKYARD - 75T Haul Outs

	JAN	FEB	MAR	APR	MAY	JUN	JUL	AUG	SEPT	OCT	NOV	DEC	TOT
2015	26	37	81	84	95	93	78	74	71	41	34	24	738
2016	19	34	62	76	87	86	78	82	65	61	32	21	703
2017	24	32	61	75	78	100	73	74	62	57	24	16	676
2018	25	29	81	91	99	88	86	72	60	57	44	23	755
2019	42	29	73	73	84	78	86	82	83				630

Shipyard 300T Haul Outs



SHIPYARD - 300T - Haul Outs

	JAN	FEB	MAR	APR	MAY	JUN	JUL	AUG	SEPT	OCT	NOV	DEC	TOT
2015	10	2	13	14	16	18	5	10	13	12	6	2	121
2016	9	6	21	12	16	14	6	10	13	19	3	8	137
2017	11	12	7	15	16	13	7	9	11	13	6	6	126
2018	9	10	13	14	19	17	8	13	14	21	9	4	151
2019	5	7	16	16	20	10	7	8	14				103