

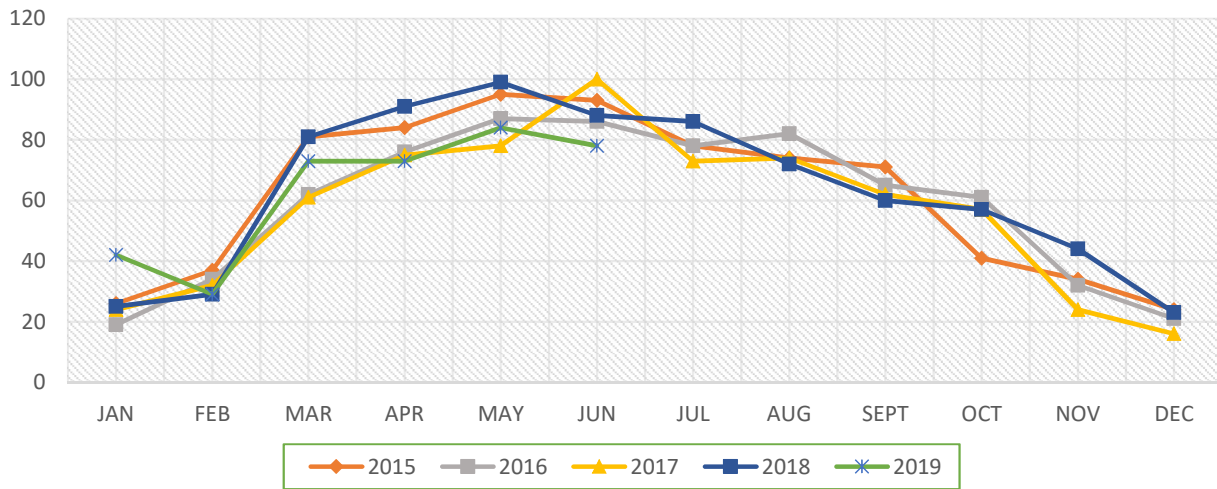




# Port of Port Townsend

## Five Year Comparisons

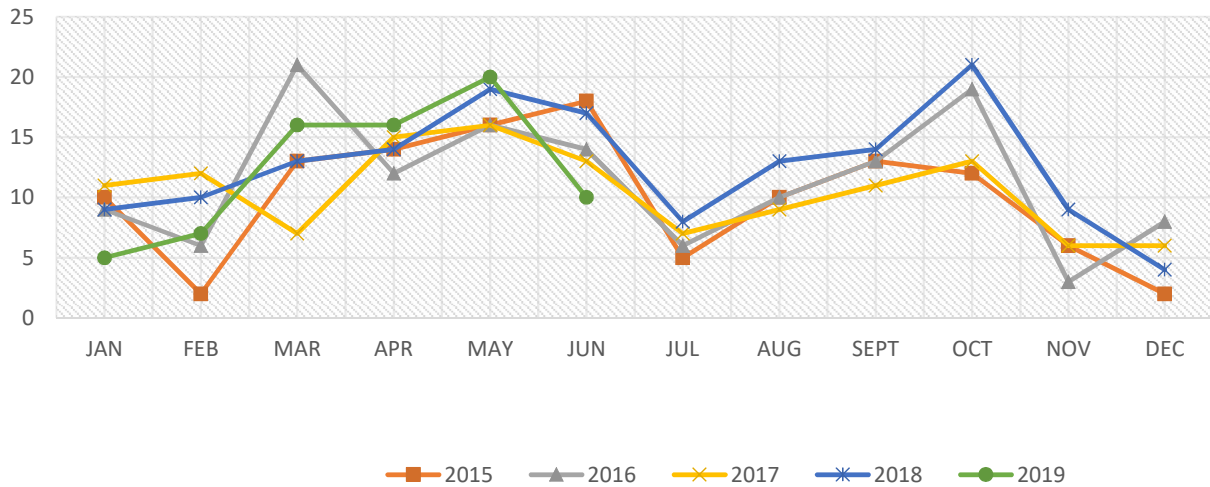
### Workyard 75T Haul Outs



### WORKYARD - 75T Haul Outs

	JAN	FEB	MAR	APR	MAY	JUN	JUL	AUG	SEPT	OCT	NOV	DEC	TOT
2015	26	37	81	84	95	93	78	74	71	41	34	24	738
2016	19	34	62	76	87	86	78	82	65	61	32	21	703
2017	24	32	61	75	78	100	73	74	62	57	24	16	676
2018	25	29	81	91	99	88	86	72	60	57	44	23	755
2019	42	29	73	73	84	78							379

### Shipyards 300T Haul Outs



### SHIPYARD - 300T - Haul Outs

	JAN	FEB	MAR	APR	MAY	JUN	JUL	AUG	SEPT	OCT	NOV	DEC	TOT
2015	10	2	13	14	16	18	5	10	13	12	6	2	121
2016	9	6	21	12	16	14	6	10	13	19	3	8	137
2017	11	12	7	15	16	13	7	9	11	13	6	6	126
2018	9	10	13	14	19	17	8	13	14	21	9	4	151
2019	5	7	16	16	20	10							74

## OPERATIONS & OCCUPANCY REPORT

MOORAGE & RV'S	JAN	FEB	MAR	APR	MAY	JUN	JUL	AUG	SEPT	OCT	NOV	DEC	Total Units	Units	
PTBH - SLIPS	94%	280	94%	282	96%	286	95%	285	97%	289	97%	291		299	SLIPS
PTBH - LINEAL	77%	2070	74%	1982	74%	1987	90%	2432	83%	2231	75%	2025		2,688	FT
PTBH - CONSTRAINED	18%	123	22%	152	22%	152	23%	157	24%	164	27%	182		683	FT
PTBH - LIMITED	48%	14	43%	13	52%	15	83%	25	90%	27	93%	28		30	SLIPS
PTBH - COM. RAFTING	91%	419	109%	501	101%	465	92%	423	85%	391	110%	508		460	FT
PH- SLIPS 1-12	56%	470	59%	496	49%	413	55%	464	42%	354	50%	417		840	FT
PH - SLIPS 13-32	100%	20	100%	20	100%	20	84%	17	40%	8	54%	11		20	SLIPS
PH - LINEAL	97%	822	92%	782	93%	786	87%	741	84%	713	85%	723		848	FT
PH - LIMITED	58%	678	63%	733	60%	707	73%	855	81%	946	83%	971		1,169	FT
PH - KAYAK	58%	23	63%	25	65%	26	77%	31	88%	35	87%	35		40	SLIPS
PH - RV	64%	29	55%	25	74%	34	81%	37	81%	37	82%	37		46	SITES
QUIL - SLIPS	26%	8	27%	9	29%	9	41%	13	79%	25	75%	24		32	SLIPS
QUIL - LINEAL	54%	113	54%	113	54%	113	62%	130	61%	128	64%	134		210	FT
QUIL - LIMITED							5%	10	58%	111	37%	71		190	FT
WORKYARD	68%	82	72%	86	87%	104	93%	112	77%	92	71%	85		120	SLIPS
SHIPYARD	74%	16	82%	18	98%	22	66%	15	67%	15	80%	18		22	SLIPS
LONGTERM	102%	36	102%	36	101%	35	101%	35	98%	34	95%	33		35	SLIPS

\*Percentages reflect monthly averages. Averages are calculated from a combination of lineal feet or slips/spaces occupied compared to the overall capacity of feet/space.

### JUNE Monthly Counts

#### POINT HUDSON

Permanent/Business	<b>11</b>
Limited Access	<b>40</b>
Winter RV Monthlies	
Monthly Moorage	<b>1</b>
Reservation Fees	<b>462</b>

#### BOAT HAVEN

Permanent	<b>306</b>
Monthly Moorage	<b>64</b>
Credit System	<b>40</b>
Annual Ramp	<b>31</b>
Daily Ramp	<b>185</b>

#### QUILCENE

Permanent	<b>27</b>
Nightly	<b>49</b>
Annual Ramp	<b>4</b>
Daily Ramp	<b>121</b>

#### YARD

One way Lifts	<b>3</b>
Re-blocks	<b>3</b>
Work Yard OPP	<b>24.0</b>
Ship Yard OPP	<b>3.4</b>

(OPP - Vessels off port property)

**Port of Port Townsend Monthly Counts - 2019**

**POINT HUDSON**

	LIMITED	RV MONTHLY	BUSINESS/ PERMANENT	MOORAGE MONTHLY	RES. FEES
JAN	26	21	11	32	265
FEB	28	21	11	31	145
MAR	30	20	11	31	287
APRIL	37	16	11	30	369
MAY	38	10	11	1	435
JUNE	40	0	11	1	462
JULY					
AUG					
SEPT					
OCT					
NOV					
DEC					

**BOAT HAVEN**

	PERMANENT	MOORAGE MONTHLY	CREDIT SYSTEM	A - RAMP	D - RAMP
JAN	301	49	6	59	64
FEB	293	47	7	14	20
MAR	294	52	23	13	98
APRIL	302	53	20	19	57
MAY	307	59	36	39	160
JUNE	306	64	40	31	185
JULY					
AUG					
SEPT					
OCT					
NOV					
DEC					

**QUILCENE**

	BUSINESS/ PERMANENT	MOORAGE NIGHTLY	A - RAMP	DAILY RAMP
JAN	12	6	6	3
FEB	13	0	1	11
MAR	13	0	6	4
APRIL	18	40	5	39
MAY	37	21	15	195
JUNE	27	49	4	121
JULY				
AUG				
SEPT				
OCT				
NOV				
DEC				

**2018**

**POINT HUDSON**

	LIMITED	RV MONTHLY	BUSINESS/ PERMANENT	MOORAGE MONTHLY	RES. FEES
JAN	24	22	11	29	235
FEB	27	21	10	32	202
MAR	31	17	10	30	260
APRIL	35	13	11	27	317
MAY	40	9	11	2	466
JUNE	40	0	11	1	572
JULY	40	0	11	1	740
AUG	40	0	11	1	514
SEPT	38	0	11	1	318
OCT	26	10	11	29	311
NOV	24	19	11	30	206
DEC	25	17	11	28	82

**BOAT HAVEN**

	PERMANENT	MOORAGE MONTHLY	CREDIT SYSTEM	A - RAMP	D - RAMP
JAN	311	44	8	44	23
FEB	308	41	7	21	21
MAR	307	46	15	29	89
APRIL	316	44	15	16	32
MAY	312	60	36	32	142
JUNE	311	74	38	36	58
JULY	311	86	46	41	352
AUG	312	81	53	9	104
SEPT	314	65	48	1	126
OCT	309	54	14	1	44
NOV	306	51	9	0	40
DEC	298	51	6	14	20

**QUILCENE**

	BUSINESS/ PERMANENT	MOORAGE NIGHTLY	A - RAMP	DAILY RAMP
JAN	8	0	1	5
FEB	11	6	1	4
MAR	11	0	1	5
APRIL	13	17	6	23
MAY	37	11	14	218
JUNE	28	37	6	90
JULY	36	42	5	56
AUG	40	47	1	126
SEPT	28	16	0	46
OCT	21	0	0	10
NOV	13	0	0	6
DEC	12	0	0	3