

APP CRS	Rwy Idg	N/A
088°	TDZE	N/A
	Apt Elev	110

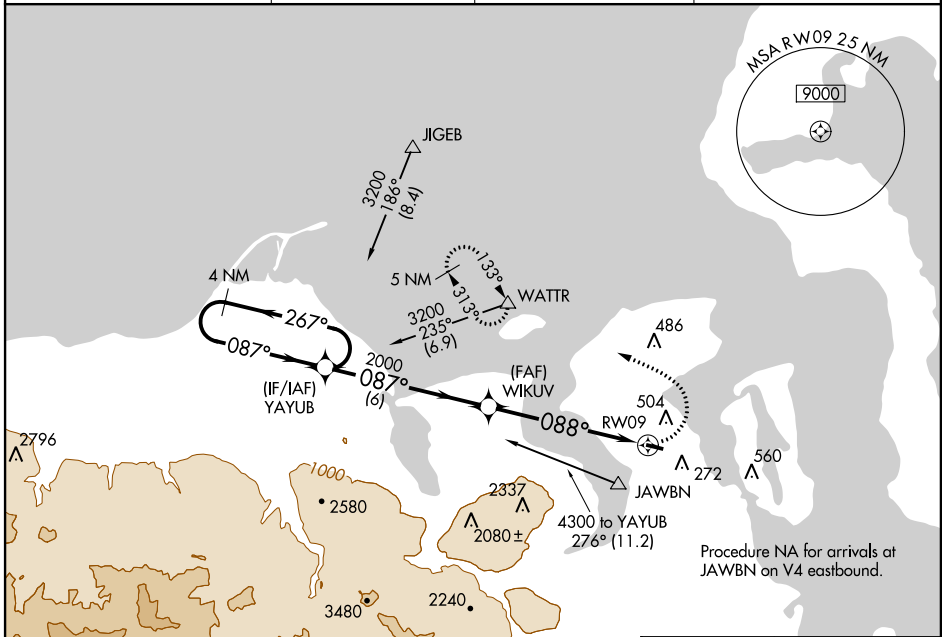
RNAV (GPS)-A

JEFFERSON COUNTY INTL (ØS9)

▼ Use AJ Eisenberg altimeter setting; when not received use Whidbey Island NAS/Aulif Field altimeter setting and increase all MDA 20 feet.
▲ NA DME/DME RNP- 0.3 NA. Procedure NA at night. Helicopter visibility reduction below 1 SM not authorized.

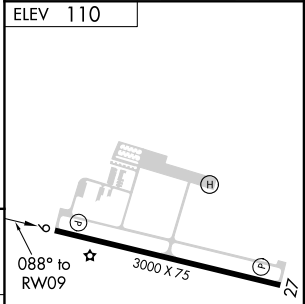
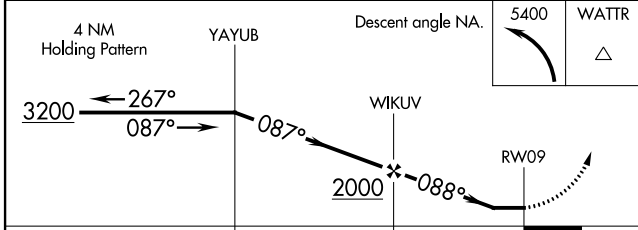
MISSED APPROACH: Climbing left turn to 5400 direct WATTR and hold, continue climb-in-hold to 5400.

AJ EISENBERG AWOS-3 132.775	AWOS-3P 119.025	WHIDBEY APP CON 118.2	CTAF 123.0
---------------------------------------	---------------------------	---------------------------------	----------------------



NW-1, 15 SEP 2016 to 13 OCT 2016

NW-1, 15 SEP 2016 to 13 OCT 2016



CATEGORY	A	B	C	D
CIRCLING	1000-1¼	890 (900-1¼)	NA	

REIL Rwy 9 and 27
 MIRL Rwy 9-27